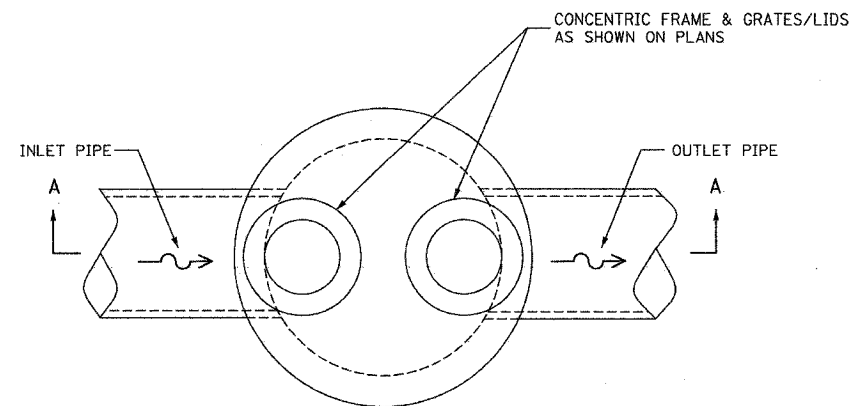
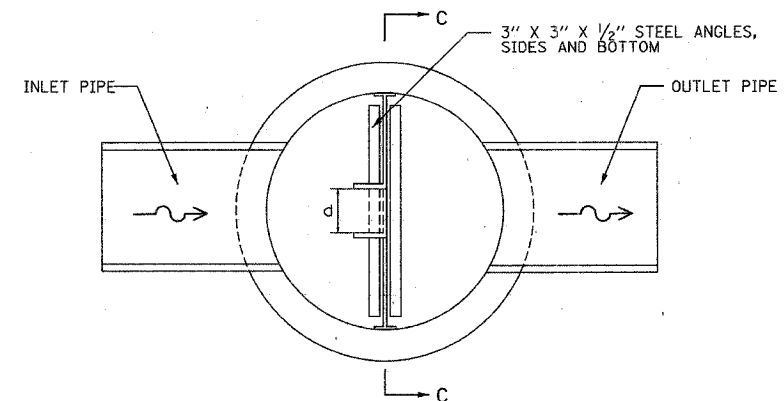


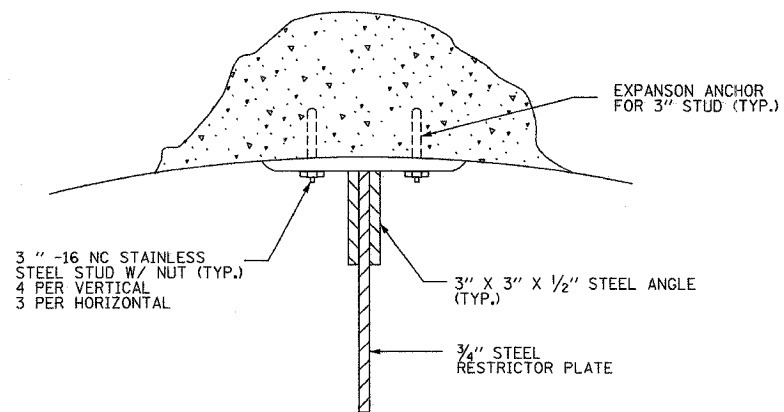
F.A. RTE.	SECTION	COUNTY	TOTAL SHEETS	SHEET NO.
3537	5Y-R-4	DUPAGE	392	143
STA.	TO STA.			
FED. ROAD DIST. NO. 1 ILLINOIS FED. AID PROJECT				
CONTRACT NO. 62295				



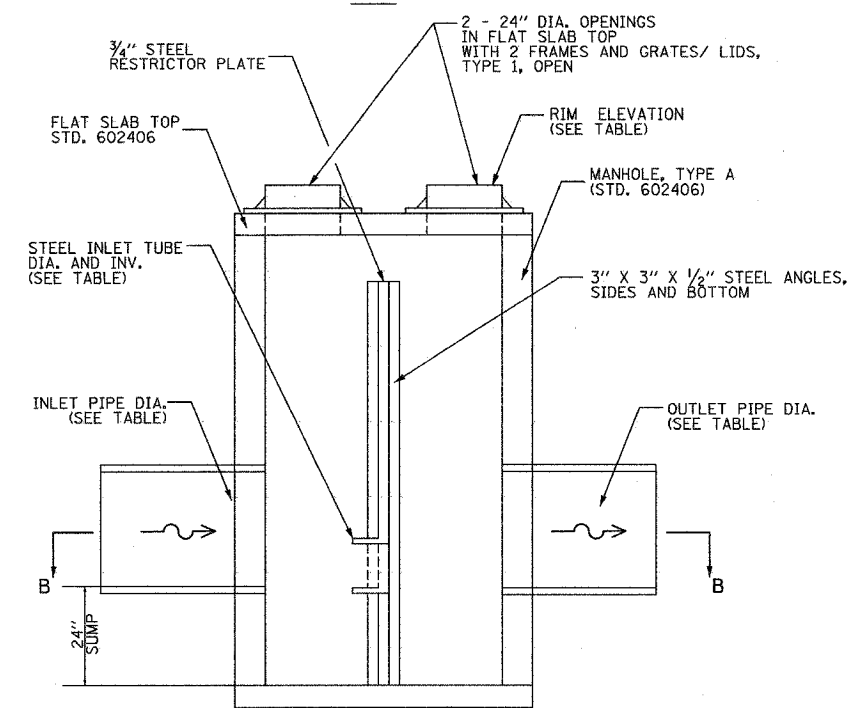
PLAN



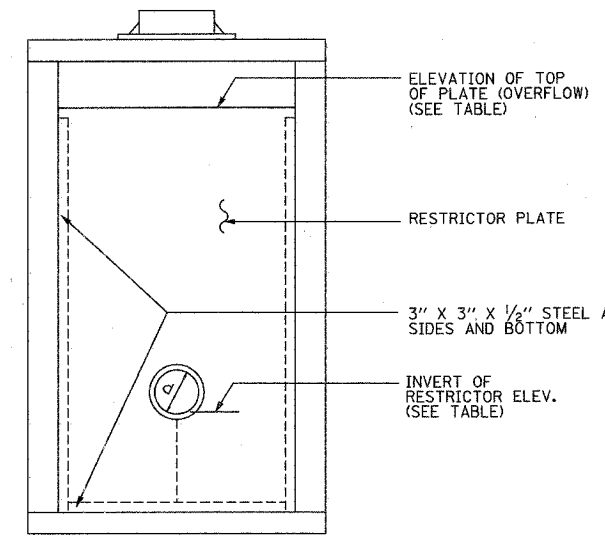
SECTION B-B



ANGLE FASTENER DETAIL

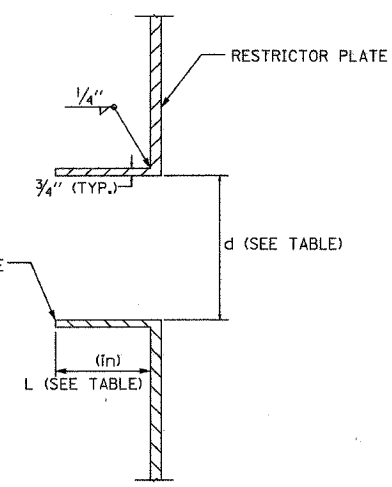


SECTION A-A

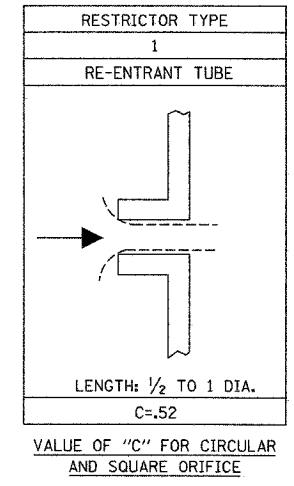


SECTION C-C

- NOTE:
1. ALL STEEL ANGLES AND PLATES TO BE GALVANIZED AFTER FABRICATION.
 2. ALL RESTRICTOR PLATES, ANGLES AND HARDWARE TO BE INCLUDED IN THE COST OF THE MANHOLE.

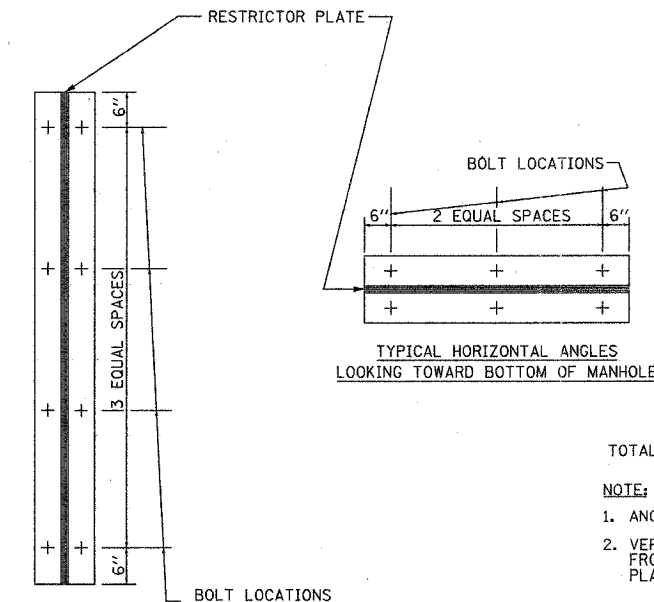


INLET TUBE DETAIL



MANHOLE NUMBER	STATION	RIM ELEV.	MANHOLE DIAMETER (FT)	INSIDE RESTRICTOR DIAMETER (d) In.	INVERT OF RESTRICTOR ELEV.	ELEVATION OF TOP OF PLATE (OVERFLOW)	INLET PIPE DIA. In.	OUTLET PIPE DIA. In.	INLET TUBE LENGTH (L) In.
243	143+59	712.11	6	29.0	704.88	710.28	42	42	14.5
441	154+93	706.60	6	27.9	701.52	705.12	36	36	14.0
355	202+12	682.44	6	27.9	673.21	677.18	54	54	14.0
481	203+19	683.01	6	25.8	673.98	677.50	36	36	13.0

BASIS OF PAYMENT: MANHOLE TYPE A, RESTRICTOR PLATE WITH THE FRAME AND GRATE AND DIAMETER SPECIFIED.



STEEL ANGLE BOLTING DETAILS

- TOTAL BOLTS REQUIRED: 22
- NOTE:
1. ANGLES SHOULD BE 3"x3"x3/8"
 2. VERTICAL ANGLES SHOULD EXTEND FROM THE BOTTOM OF THE RESTRICTOR PLATE TO THE TOP.
 3. HORIZONTAL ANGLES SHOULD EXTEND FROM VERTICAL ANGLE TO VERTICAL ANGLE.

ALL DIMENSIONS ARE IN INCHES UNLESS OTHERWISE SHOWN

REVISIONS	
NAME	DATE

SHEET 16 OF 19

ILLINOIS DEPARTMENT OF TRANSPORTATION

MANHOLE WITH RESTRICTOR PLATE
(2 OF 2)

U.S. ROUTE 20 (LAKE STREET)

SCALE: NTS
DATE: 03/01/05

DRAWN BY: V.P.
CHECKED BY: Y.J.

I:\187\final submittal\final drawings\14646502-2b.rvt