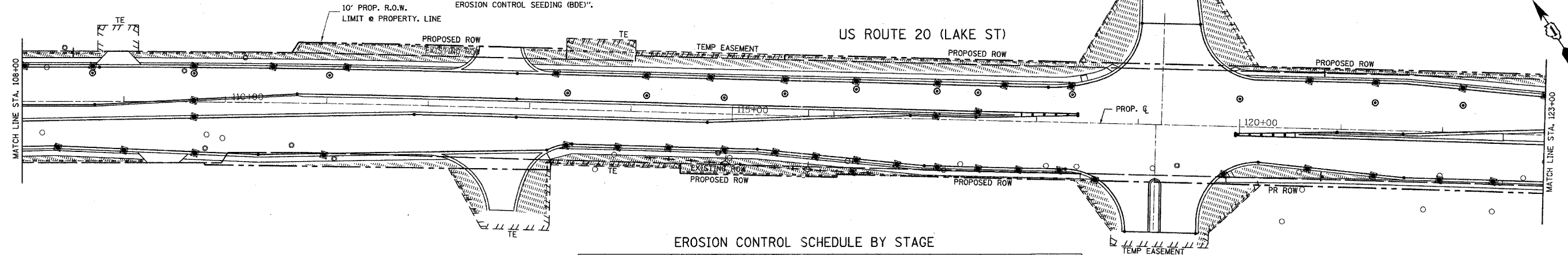


- LEGEND:**
- TEMPORARY DITCH CHECK
  - SEDIMENT CONTROL, INLET FILTER AND SEDIMENT CONTROL, INLET FILTER CLEANING. SEE NOTE 1 & 2 BELOW.
  - SEDIMENT CONTROL SILT FENCE
  - SEDIMENT CONTROL SILT FENCE MAINTENANCE
  - PROPOSED PERMANENT SWALE
  - TEMPORARY EROSION CONTROL SEEDING

**NOTES:**

1. REMOVAL OF SEDIMENT CONTROL, INLET FILTER IS AT A TIME AND STAGE AS DIRECTED BY ENGINEER.
2. CLEANING OF SEDIMENT CONTROL, INLET FILTER IS AT THE DIRECTION OF ENGINEER.
3. SILT FILTER FENCE SHALL BE PLACED AT LOCATIONS SHOWN ON PLANS OR AS DIRECTED BY THE ENGINEER, THIS WORK SHALL BE PAID AS "SEDIMENT CONTROL SILT FENCE"
4. TEMPORARY SEEDING SHALL BE PLACED IN DISTURBED AREAS DURING CONSTRUCTION ACTIVITIES PER THE SPECIAL PROVISION "TEMPORARY EROSION CONTROL SEEDING (BDE)".
5. TOPSOIL, EROSION CONTROL BLANKET AND FERTILIZER NUTRIENTS ARE NOT REQUIRED FOR TEMPORARY SEEDING.
6. SEED BED PREPARATION WILL NOT BE REQUIRED FOR TEMPORARY SEEDING IF THE SOIL IS IN A LOOSE CONDITION, LIGHT DISKING SHALL BE DONE IF THE SOIL IS HARD AND CRUSTED.
7. BROADCASTING OF THE SEED BY MACHINE OR HAND METHODS AND HYDRAULIC SEEDING OR OTHER METHODS APPROVED BY THE ENGINEER WILL BE ALLOWED FOR TEMPORARY SEEDING.



**GENERAL NOTES:**

1. THE CONTRACTOR SHALL IMPLEMENT EROSION AND SEDIMENT CONTROL MEASURES BEFORE ANY OPERATIONS IN THE WORK AREA COMMENCE. LOCATE MEASURES OUTSIDE CONSTRUCTION LIMITS BUT INSIDE RIGHT-OF-WAY OR EASEMENTS.
2. DURING AND AFTER REMOVAL OF EXISTING PAVEMENT, CURBS, ETC., PROTECTION OF EXISTING CATCH BASINS, INLETS, AND MANHOLES WILL BE REQUIRED AND MAINTAINED UNTIL SUCH TIME THE PROPOSED STORM SEWER SYSTEM IS IN PLACE AND THE EXISTING SYSTEM IS ABANDONED OR REMOVED.
3. CONTRACTOR'S ATTENTION IS CALLED TO SPECIAL PROVISION SEDIMENT CONTROL, DRAINAGE STRUCTURE INLET FILTER AND TO SPECIAL PROVISION SEDIMENT CONTROL, DRAINAGE STRUCTURE INLET FILTER CLEANING FOR THE PROTECTION OF PROPOSED DRAINAGE STRUCTURES AS INDICATED ON THE PLANS/OR DIRECTED BY ENGINEER.
4. IN COMPLIANCE WITH THE ILLINOIS ENVIRONMENTAL PROTECTION AGENCY (IEPA), FOR CONSTRUCTION PROJECT WHICH DISTURB ONE ACRE OR MORE TOTAL LAND AREA, THE RESIDENT ENGINEER AND THE CONTRACTOR SHALL COOPERATIVELY DEVELOP A STORM WATER POLLUTION PREVENTION PLAN AS SPECIFIED IN THE SPECIAL PROVISION FOR NATIONAL POLLUTANT DISCHARGE ELIMINATION SYSTEM (NPDES) CONTAINED IN THE CONTRACT DOCUMENTS.

**EROSION CONTROL SCHEDULE BY STAGE**

EROSION CONTROL ITEM	UNIT	PRE-STAGE	STAGE I	STAGE II	STAGE III	TOTAL
TEMPORARY DITCH CHECK	EACH		5	15		20
TEMPORARY EROSION CONTROL SEEDING	POUND		1,800	1,960		3,760
SEDIMENT CONTROL SILT FENCE	FOOT		13,351	11,692		25,043
SEDIMENT CONTROL SILT FENCE MAINTENANCE	FOOT		13,351	11,692		25,043
SEDIMENT CONTROL, INLET FILTER	EACH		184	192	16	392
SEDIMENT CONTROL, INLET FILTER CLEANING	EACH		368	384	32	784
STONE RIPRAP CLASS A4	50 YD		109	177		286
FILTER FABRIC FOR USE WITH RIPRAP	50 YD		109	177		286
MULCH, METHOD 1	ACRE		2.7	2.8		5.5

MARCUS CINEMA DR.

REVISIONS	
NAME	DATE

ILLINOIS DEPARTMENT OF TRANSPORTATION  
**EROSION CONTROL**  
 STA. 105+70.68 TO STA. 123+00  
 US ROUTE 20 (LAKE STREET)  
 SCALE: 1"=50'  
 DATE 03/01/05  
 DRAWN BY V.P.  
 CHECKED BY Y.J.

I:\167\project\_design\Illinois\464646\01-26.dwg