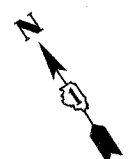
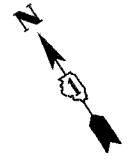
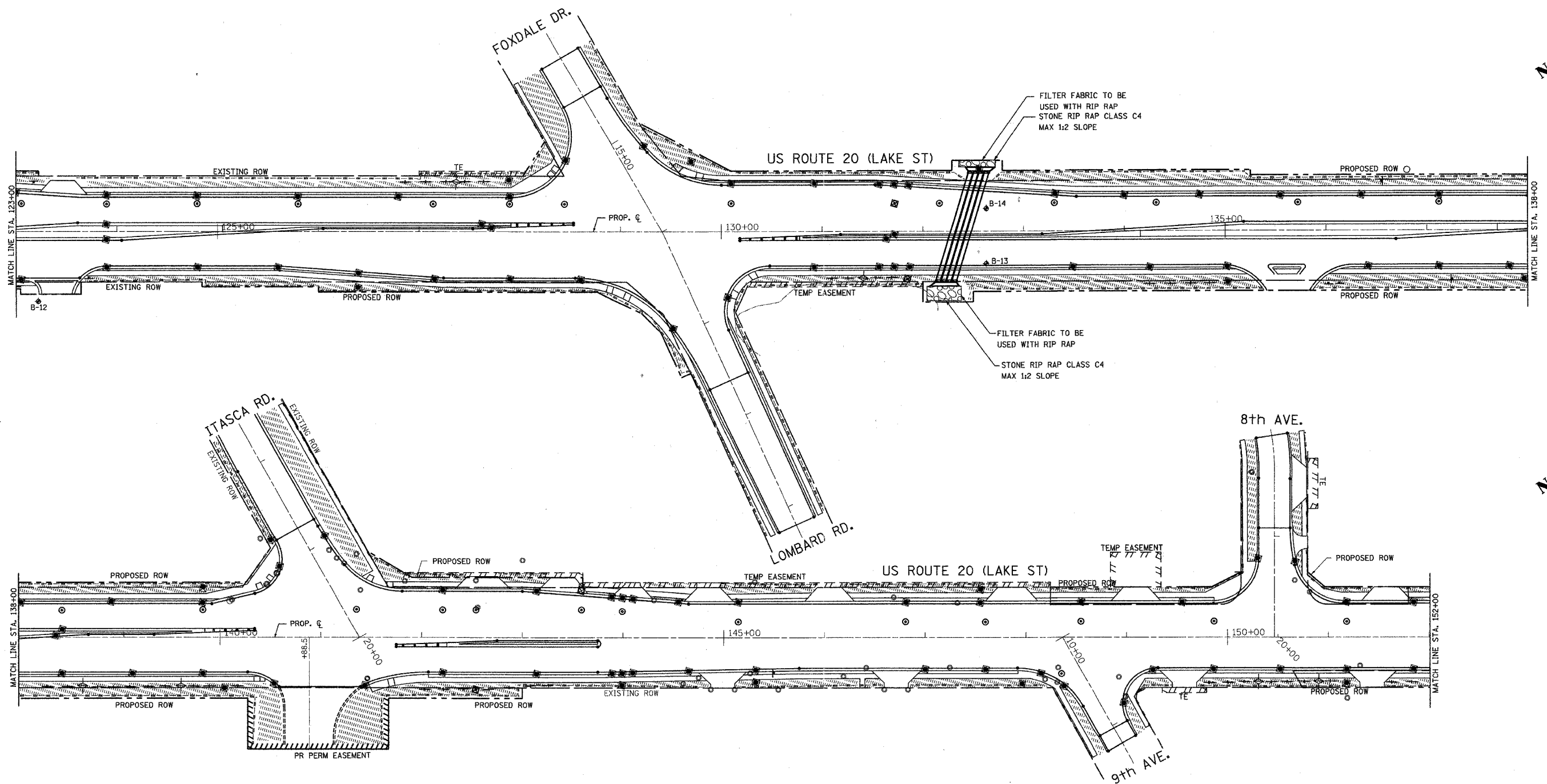


F.A. RTE.	SECTION	COUNTY	TOTAL SHEETS	SHEET NO.
3537	5Y-R-4	DUPAGE	392	149
STA. 123+00		TO STA. 152+00		
FED. ROAD DIST. NO. 1		ILLINOIS FED. AID PROJECT		
CONTRACT NO. 62295				

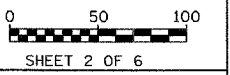


**NOTES:**

- REMOVAL OF SEDIMENT CONTROL, INLET FILTER IS AT A TIME AND STAGE AS DIRECTED BY ENGINEER.
- CLEANING OF SEDIMENT CONTROL, INLET FILTER IS AT THE DIRECTION OF ENGINEER.
- SILT FILTER FENCE SHALL BE PLACED AT LOCATIONS SHOWN ON PLANS OR AS DIRECTED BY THE ENGINEER, THIS WORK SHALL BE PAID AS "SEDIMENT CONTROL SILT FENCE"
- TEMPORARY SEEDING SHALL BE PLACED IN DISTURBED AREAS DURING CONSTRUCTION ACTIVITIES PER THE SPECIAL PROVISION "TEMPORARY EROSION CONTROL SEEDING (BDE)".
- TOPSOIL, EROSION CONTROL BLANKET AND FERTILIZER NUTRIENTS ARE NOT REQUIRED FOR TEMPORARY SEEDING.
- SEED BED PREPARATION WILL NOT BE REQUIRED FOR TEMPORARY SEEDING IF THE SOIL IS IN A LOOSE CONDITION, LIGHT DISKING SHALL BE DONE IF THE SOIL IS HARD AND CRUSTED.
- BROADCASTING OF THE SEED BY MACHINE OR HAND METHODS AND HYDRAULIC SEEDING OR OTHER METHODS APPROVED BY THE ENGINEER WILL BE ALLOWED FOR TEMPORARY SEEDING.

**LEGEND:**

- TEMPORARY DITCH CHECK
- SEDIMENT CONTROL, INLET FILTER AND SEDIMENT CONTROL, INLET FILTER CLEANING, SEE NOTE 1 & 2 BELOW.
- SEDIMENT CONTROL SILT FENCE
- SEDIMENT CONTROL SILT FENCE MAINTENANCE
- PROPOSED PERMANENT SWALE
- TEMPORARY EROSION CONTROL SEEDING



REVISIONS	
NAME	DATE

ILLINOIS DEPARTMENT OF TRANSPORTATION

**EROSION CONTROL**  
**STA. 123+00 TO STA. 152+00**  
**US ROUTE 20 (LAKE STREET)**

SCALE: 1"=50'  
DATE 03/01/05

DRAWN BY V.P.  
CHECKED BY Y.J.

H:\197\project\_design\_files\1464\101-2b.dwg