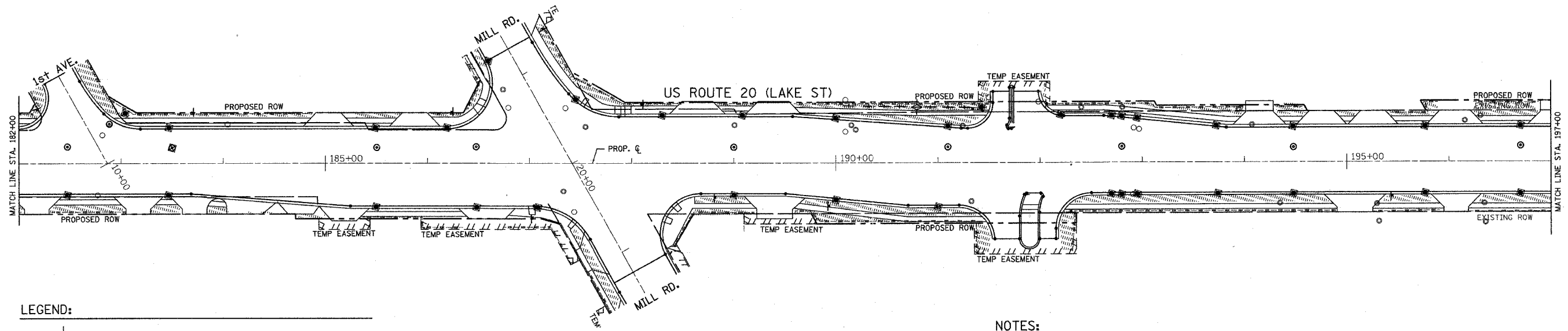

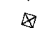

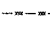
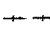
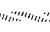


F.A. RTE.	SECTION	COUNTY	TOTAL SHEETS	SHEET NO.
3537	5Y-R-4	DUPAGE	392	151
STA. 182+00		TO STA. 211+00		
FED. ROAD DIST. NO. 1 ILLINOIS FED. AID PROJECT				
CONTRACT NO. 62295				

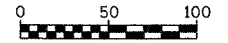
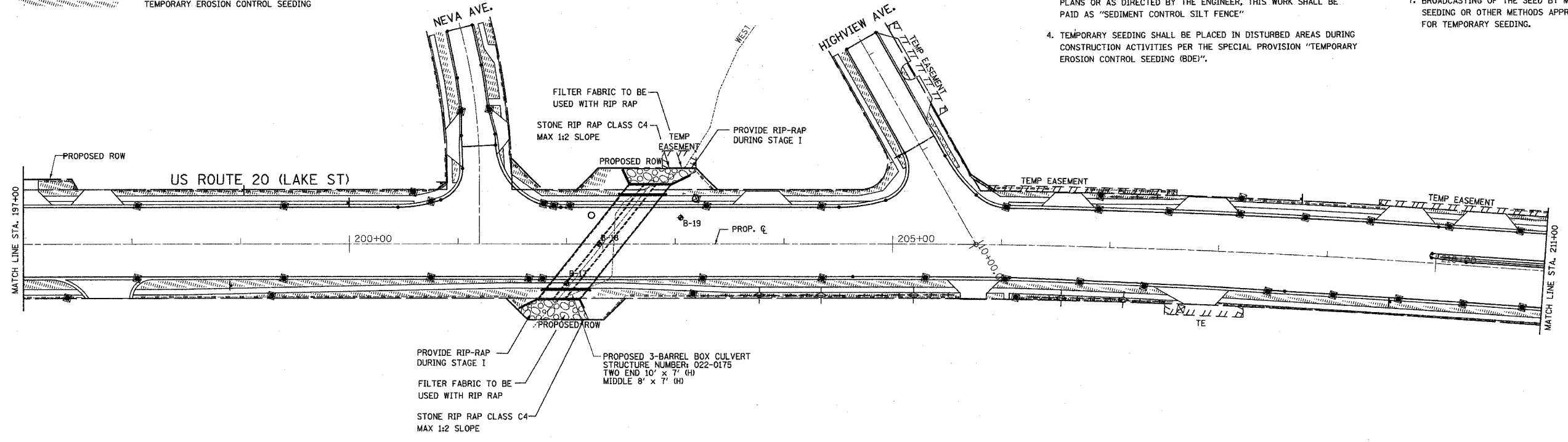


LEGEND:

-  TEMPORARY DITCH CHECK
-  SEDIMENT CONTROL, INLET FILTER AND SEDIMENT CONTROL, INLET FILTER CLEANING. SEE NOTE 1 & 2 BELOW.
-  SEDIMENT CONTROL SILT FENCE
-  SEDIMENT CONTROL SILT FENCE MAINTENANCE
-  PROPOSED PERMANENT SWALE
-  TEMPORARY EROSION CONTROL SEEDING

NOTES:

1. REMOVAL OF SEDIMENT CONTROL, INLET FILTER IS AT A TIME AND STAGE AS DIRECTED BY ENGINEER.
2. CLEANING OF SEDIMENT CONTROL, INLET FILTER IS AT THE DIRECTION OF ENGINEER.
3. SILT FILTER FENCE SHALL BE PLACED AT LOCATIONS SHOWN ON PLANS OR AS DIRECTED BY THE ENGINEER, THIS WORK SHALL BE PAID AS "SEDIMENT CONTROL SILT FENCE"
4. TEMPORARY SEEDING SHALL BE PLACED IN DISTURBED AREAS DURING CONSTRUCTION ACTIVITIES PER THE SPECIAL PROVISION "TEMPORARY EROSION CONTROL SEEDING (BDE)".
5. TOPSOIL, EROSION CONTROL BLANKET AND FERTILIZER NUTRIENTS ARE NOT REQUIRED FOR TEMPORARY SEEDING.
6. SEED BED PREPARATION WILL NOT BE REQUIRED FOR TEMPORARY SEEDING IF THE SOIL IS IN A LOOSE CONDITION, LIGHT DISKING SHALL BE DONE IF THE SOIL IS HARD AND CRUSTED.
7. BROADCASTING OF THE SEED BY MACHINE OR HAND METHODS AND HYDRAULIC SEEDING OR OTHER METHODS APPROVED BY THE ENGINEER WILL BE ALLOWED FOR TEMPORARY SEEDING.



SHEET 4 OF 6

REVISIONS	
NAME	DATE

ILLINOIS DEPARTMENT OF TRANSPORTATION

EROSION CONTROL
STA. 182+00 TO STA. 211+00
US ROUTE 20 (LAKE STREET)

SCALE: 1"=50'
DATE 03/01/05

DRAWN BY V.P.
CHECKED BY Y.J.

I:\187\project_design_files\186\051012b.sht