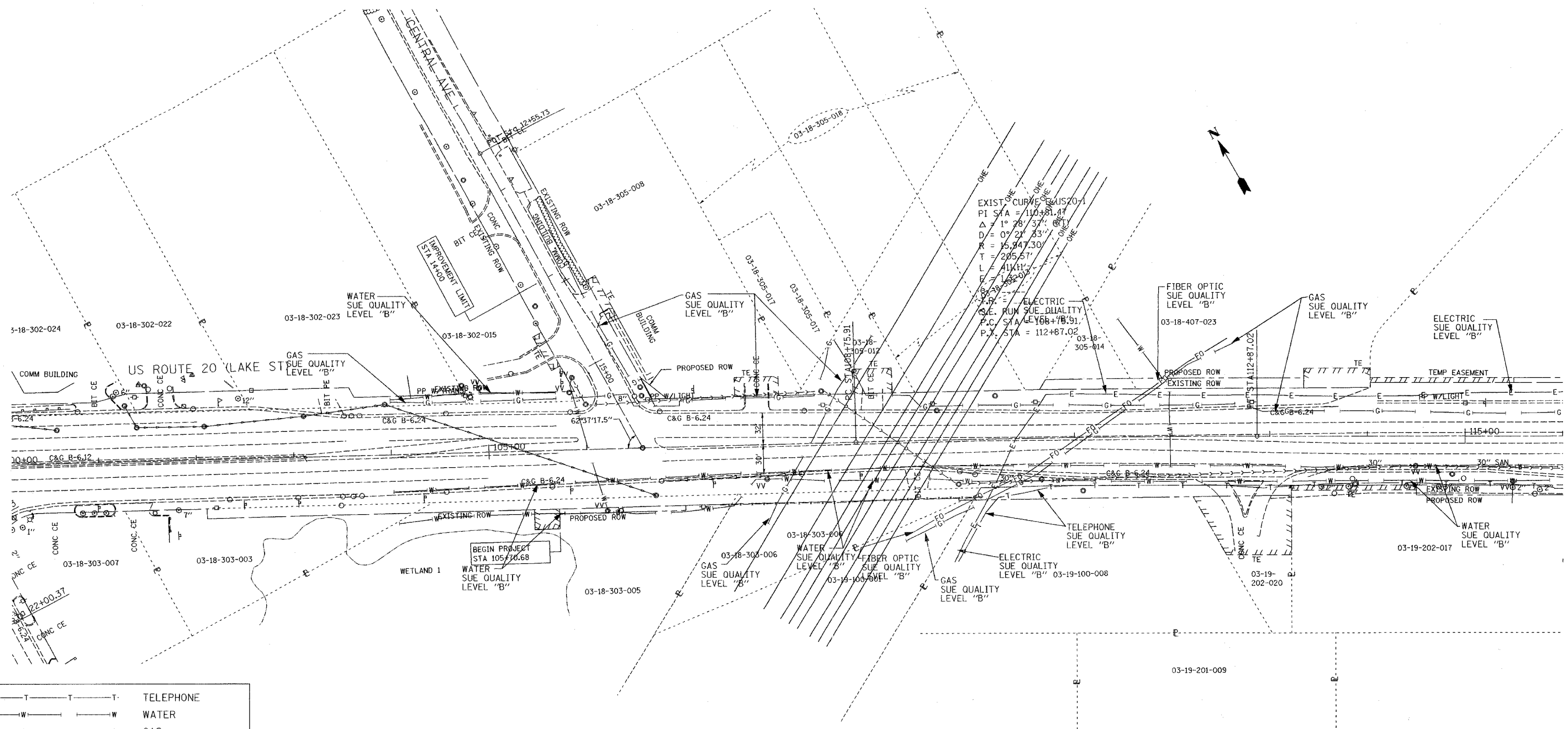


F.A.U. RTE.	SECTION	COUNTY	TOTAL SHEETS	SHEET NO.
3537	5Y-R-4	DUPAGE	370	161
STA.		TO STA.		
FED. ROAD DIST. NO. 1		ILLINOIS	FED. AID PROJECT	
CONTRACT NO. 62295				



EXIST CURVE DATA
 PI STA = 110+81.47
 $\Delta = 1^\circ 28' 37''$
 $D = 0' 21' 53''$
 $R = 15,947.30'$
 $T = 205.51'$
 $L = 1114.1'$
 $E = 163.20'$
 P.C. STA = 108+78.91
 P.T. STA = 112+87.02

—T—T—T—	TELEPHONE
—W—W—W—	WATER
—G—G—G—	GAS
—CTV—CTV—CTV—	CABLE TELEVISION
—FO—FO—FO—	FIBER OPTIC
—E—E—E—	ELECTRIC

TBE GROUP, INC.
 CIVIL ENGINEERING • TRANSPORTATION • ENVIRONMENTAL
 • PLANNING • UTILITY ENGINEERING/LOCATING
 SOUTHERN REGION: FL, GA, SC, NC
 NORTHERN REGION: IL, IN, MI, OH, MD, NJ, NY
 PA, VA, CANADA
 WESTERN REGION: AZ, NV, NM, TX, CA, OR, UT, WA
 IL09500141 & IL09500143
 Signature _____
 SUE Quality Level "B" : Designating



205 W. WACKER DRIVE
 SUITE 1020
 CHICAGO, IL 60606
 (312) 704-1970

Utility shown on these plans as depicted in the legend have been investigated by TBE Group, Inc in accordance with SUE Industry Standards as of 11/5/02. All other information shown has been provided to TBE Group, Inc by others.

REVISIONS	
NAME	DATE

ILLINOIS DEPARTMENT OF TRANSPORTATION
 US 20 East Of Rohlwing Rd.
 West of Addison Rd.
 Contract No: 62295
 DuPage County
 SCALE: 1"=50'
 DATE: 03/01/05
 DRAWN BY: JAC
 CHECKED BY: RLC