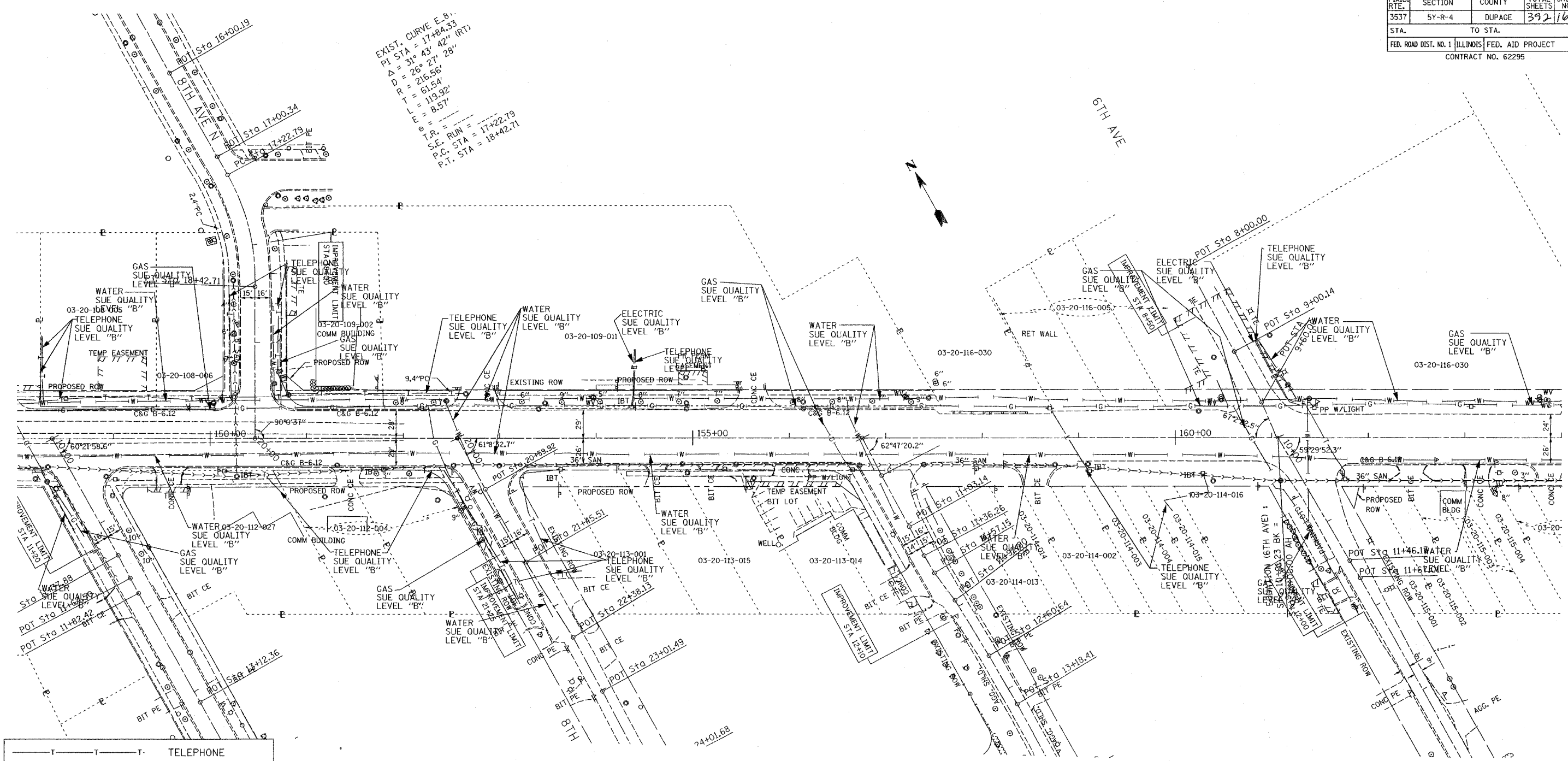


F.A.U. R/L	SECTION	COUNTY	TOTAL SHEETS	SHEET NO.
3537	5Y-R-4	DUPAGE	392	164
STA.	TO STA.			
FED. ROAD DIST. NO. 1 ILLINOIS		FED. AID PROJECT		
CONTRACT NO. 62295				

EXIST. CURVE E.B.  
 PI STA = 17+84.33  
 $\Delta = 31^{\circ} 43' 42''$  (RT)  
 $D = 26^{\circ} 21' 28''$   
 $R = 216.56'$   
 $T = 61.54'$   
 $L = 119.92'$   
 $e = 8.57'$   
 T.R. =  
 S.E. RUN = 17+22.79  
 P.C. STA = 18+42.71



—T—T—T	TELEPHONE
—W—W—W	WATER
—G—G—G	GAS
—CTV—CTV—CTV	CABLE TELEVISION
—FO—FO—FO	FIBER OPTIC
—E—E—E	ELECTRIC

**TBE GROUP, INC.**  
 CIVIL ENGINEERING • TRANSPORTATION • ENVIRONMENTAL  
 • PLANNING • UTILITY ENGINEERING/LOCATING  
 SOUTHERN REGION: FL, GA, SC, NC  
 NORTHERN REGION: IL, IN, MI, OH, MD, NJ, NY  
 PA, VA, CANADA  
 WESTERN REGION: AZ, NV, NM, TX, CA, OR, UT, WA

IL09500141 & IL09500143  
 Signature \_\_\_\_\_



205 W. WACKER DRIVE  
 SUITE 1020  
 CHICAGO, IL 60606  
 (312) 704-1970

Utility shown on these plans as depicted in the legend have been investigated by TBE Group, Inc in accordance with SUE Industry Standards as of 11/5/02. All other information shown has been provided to TBE Group, Inc by others.

REVISIONS		ILLINOIS DEPARTMENT OF TRANSPORTATION
NAME	DATE	
		US 20 East Of Rohlwing Rd. West of Addison Rd. Contract No: 62295 DuPage County
		SCALE: 1"=50'
		DATE: 03/01/05
		DRAWN BY: JAC
		CHECKED BY: RLC