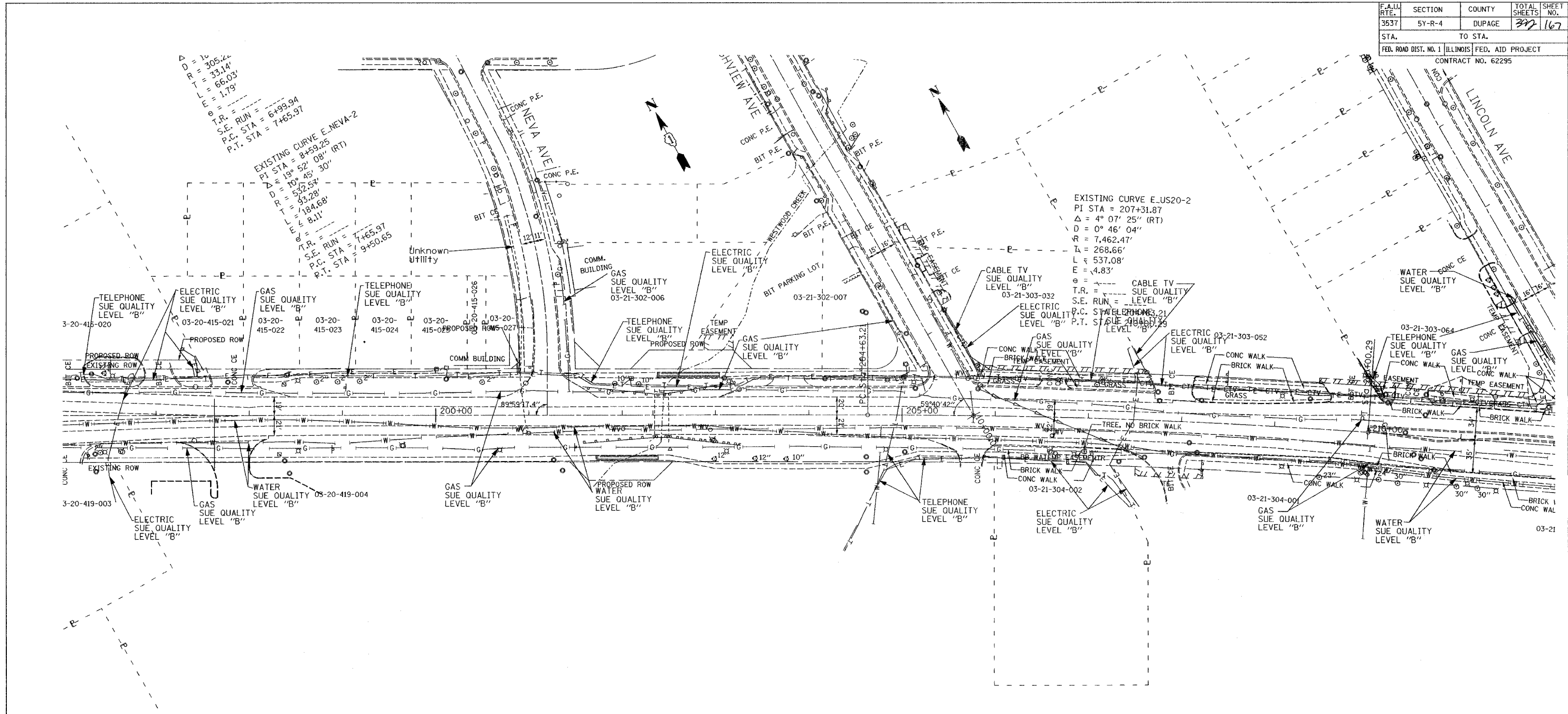


F.A.U. SECTION COUNTY TOTAL SHEETS SHEET NO.	3537 5Y-R-4 DUPAGE 372 167
STA. TO STA.	
FED. ROAD DIST. NO. 1 ILLINOIS FED. AID PROJECT CONTRACT NO. 62295	



—T—T—T—	TELEPHONE
—W—W—W—	WATER
—G—G—G—	GAS
—CTV—CTV—CTV—	CABLE TELEVISION
—FO—FO—FO—	FIBER OPTIC
—E—E—E—	ELECTRIC

**TBE GROUP, INC.**  
 CIVIL ENGINEERING • TRANSPORTATION • ENVIRONMENTAL  
 • PLANNING • UTILITY ENGINEERING/LOCATING  
 SOUTHERN REGION: FL, GA, SC, NC  
 NORTHERN REGION: IL, IN, MI, OH, MD, NJ, NY  
 PA, VA, CANADA  
 WESTERN REGION: AZ, NV, NM, TX, CA, OR, UT, WA  
 IL09500141 & IL09500143  
 Signature \_\_\_\_\_  
 SUE Quality Level "B" : Designating



205 W. WACKER DRIVE  
 SUITE 1020  
 CHICAGO, IL 60606  
 (312) 704-1970

Utility shown on these plans as depicted in the legend have been investigated by TBE Group, Inc in accordance with SUE Industry Standards as of 11/5/02.  
 All other information shown has been provided to TBE Group, Inc by others.

REVISIONS		ILLINOIS DEPARTMENT OF TRANSPORTATION
NAME	DATE	
		US 20 East Of Rohlwing Rd. West of Addison Rd. Contract No: 62295 DuPage County  SCALE: 1"=50' DATE: 03/01/05 DRAWN BY: JAC CHECKED BY: RLC