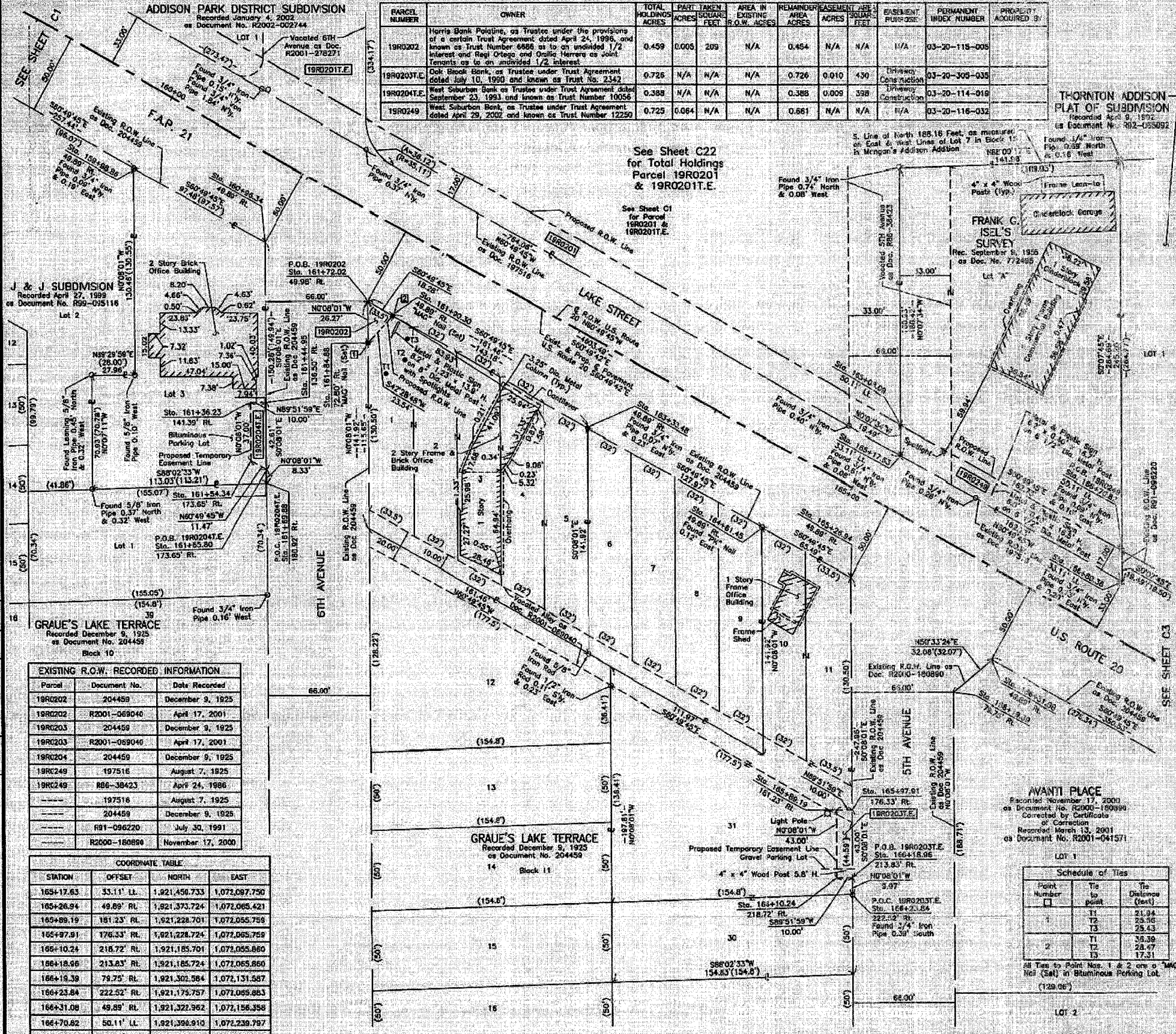


SHEET NO.	170
TOTAL SHEETS	32
COUNTY	DUPAGE
SECTION	5Y-R-4
F.A.U. RTE.	3587
FED. ROAD DIST. NO.	1
ILLINOIS FED. AID PROJECT CONTRACT NO.	62255

PART OF THE WEST 1/2 OF SEC. 20, TWP. 40 N., R. 11 E. OF THE 3RD. P.M., IN DuPAGE COUNTY, ILLINOIS.



PARCEL NUMBER	OWNER	TOTAL HOLDINGS ACRES	PART TAKEN ACRES	AREA IN EXISTING S.O.W. ACRES	REMAINDER AREA ACRES	EASEMENT AREAS SOLAR FEET	EASEMENT PURPOSE	PERMANENT INDEX NUMBER	PROJECT ACQUIRED BY
19R0202	Harris Bank Building, as Trustee under the provisions of a certain Trust Agreement dated April 24, 1996, and known as Trust Number 6886 as to an undivided 1/2 interest and Regi Ortega and Onelio Herrera as joint tenants as to an undivided 1/2 interest.	0.459	0.005	209	N/A	0.454	N/A	N/A	03-20-118-005
19R0203T.E.	Oak Brook Bank, as Trustee under Trust Agreement dated July 10, 1990 and known as Trust No. 2342	0.726	N/A	N/A	N/A	0.726	0.010	430	03-20-309-035
19R0204T.E.	West Suburban Bank as Trustee under Trust Agreement dated September 23, 1993 and known as Trust Number 10056	0.388	N/A	N/A	N/A	0.388	0.009	398	03-20-114-019
19R0249	West Suburban Bank, as Trustee under Trust Agreement dated April 29, 2002 and known as Trust Number 12250	0.725	0.064	N/A	N/A	0.661	N/A	N/A	03-20-116-032



**EXISTING R.O.W. RECORDED INFORMATION**

Parcel	Document No.	Date Recorded
19R0202	204459	December 9, 1925
19R0202	R2001-069040	April 17, 2001
19R0203	204459	December 9, 1925
19R0203	R2001-069040	April 17, 2001
19R0204	204459	December 9, 1925
19R0249	197516	August 7, 1925
19R0249	R86-38423	April 24, 1986
---	197516	August 7, 1925
---	204459	December 9, 1925
---	R91-096220	July 30, 1991
---	R2000-160890	November 17, 2000

**COORDINATE TABLE**

STATION	OFFSET	NORTH	EAST
165+17.63	33.11' LL	1,921,456.733	1,072,087.750
165+26.94	49.89' RL	1,921,373.724	1,072,065.421
165+89.19	181.23' RL	1,921,228.701	1,072,055.528
165+97.91	176.33' RL	1,921,228.724	1,072,065.759
166+10.24	218.72' RL	1,921,185.701	1,072,055.860
166+18.96	213.83' RL	1,921,185.724	1,072,065.860
166+19.38	79.75' RL	1,921,302.984	1,072,131.587
166+23.84	222.52' RL	1,921,175.757	1,072,065.863
166+31.08	49.89' RL	1,921,322.962	1,072,156.358
166+70.82	50.11' LL	1,921,398.910	1,072,239.797
166+80.36	33.11' LL	1,921,371.418	1,072,239.841

THIS IS TO CERTIFY THAT WE, JORGENSEN & ASSOCIATES, INC., AN ILLINOIS PROFESSIONAL DESIGN FIRM, LAND SURVEYING CORPORATION, NUMBER 184-2771 HAVE SURVEYED THE PLAT OF HIGHWAYS SHOWN HEREON IN SECTION 20, TOWNSHIP 40N., RANGE 11E., OF THE THIRD PRINCIPAL MERIDIAN, DUPAGE COUNTY, THAT THE SURVEY IS TRUE AND COMPLETE AS SHOWN TO THE BEST OF MY KNOWLEDGE AND BELIEF THAT THE PLAT CORRECTLY REPRESENTS SAID SURVEY, THAT ALL MONUMENTS FOUND AND ESTABLISHED ARE OF PERMANENT QUALITY AND OCCUPY THE POSITIONS SHOWN THEREON AND THAT THE MONUMENTS ARE SUFFICIENT TO ENABLE THE SURVEY TO BE REPRODUCED MADE FOR THE DEPARTMENT OF TRANSPORTATION, STATE OF ILLINOIS. DATED AT LAKE VILLA, ILLINOIS THIS \_\_\_\_\_ DAY OF \_\_\_\_\_, 20\_\_\_\_ A.D.

ILLINOIS PROFESSIONAL LAND SURVEYOR NO. 25-2797  
 LICENSE EXPIRATION DATE: NOVEMBER 30, 2004

NOTE: COORDINATES ARE GROUND VALUES AND CAN BE CONVERTED TO GRID VALUES BY MULTIPLYING THE PUBLISHED GROUND COORDINATES BY A SCALE FACTOR OF 0.99998272, AS PROVIDED BY THE ILLINOIS DEPARTMENT OF TRANSPORTATION.

STATION	OFFSET	NORTH	EAST
159+65.96	46.68' RL	1,921,631.116	1,071,604.318
160+58.24	65.09' RL	1,921,583.607	1,071,689.432
161+36.23	141.39' RL	1,921,484.272	1,071,679.854
161+44.95	136.50' RL	1,921,484.295	1,071,689.864
161+64.34	173.65' RL	1,921,447.272	1,071,679.750
161+65.80	173.65' RL	1,921,441.682	1,071,689.763
161+69.08	180.92' RL	1,921,433.346	1,071,689.782
161+72.02	46.69' RL	1,921,546.716	1,071,758.519
161+84.88	72.80' RL	1,921,520.446	1,071,755.579
161+89.30	49.89' RL	1,921,537.806	1,071,771.477
163+33.46	49.89' RL	1,921,468.017	1,072,098.502
164+61.45	49.89' RL	1,921,405.642	1,072,008.242
165+08.09	50.11' LL	1,921,470.226	1,072,097.707

JORGENSEN & ASSOCIATES, INC.  
 120 PARK AVENUE  
 LAKE VILLA, ILLINOIS 60466  
 (847) 380-3371

**PLAT OF HIGHWAYS**  
 STATE OF ILLINOIS  
 DEPARTMENT OF TRANSPORTATION  
 F.A.P. 21 (U.S. ROUTE 20)

SECTION 5Y-R-4      DuPAGE COUNTY  
 PROJECT            JOB NO. R-91-005-92  
 STATION 159+00    TO STATION 167+00  
 SCALE: 1"=30'      SHEET C2 OF C30

BUREAU OF LAND ACQUISITION  
 201 WEST CENTER COURT  
 SCHAMBERG, ILLINOIS 60196