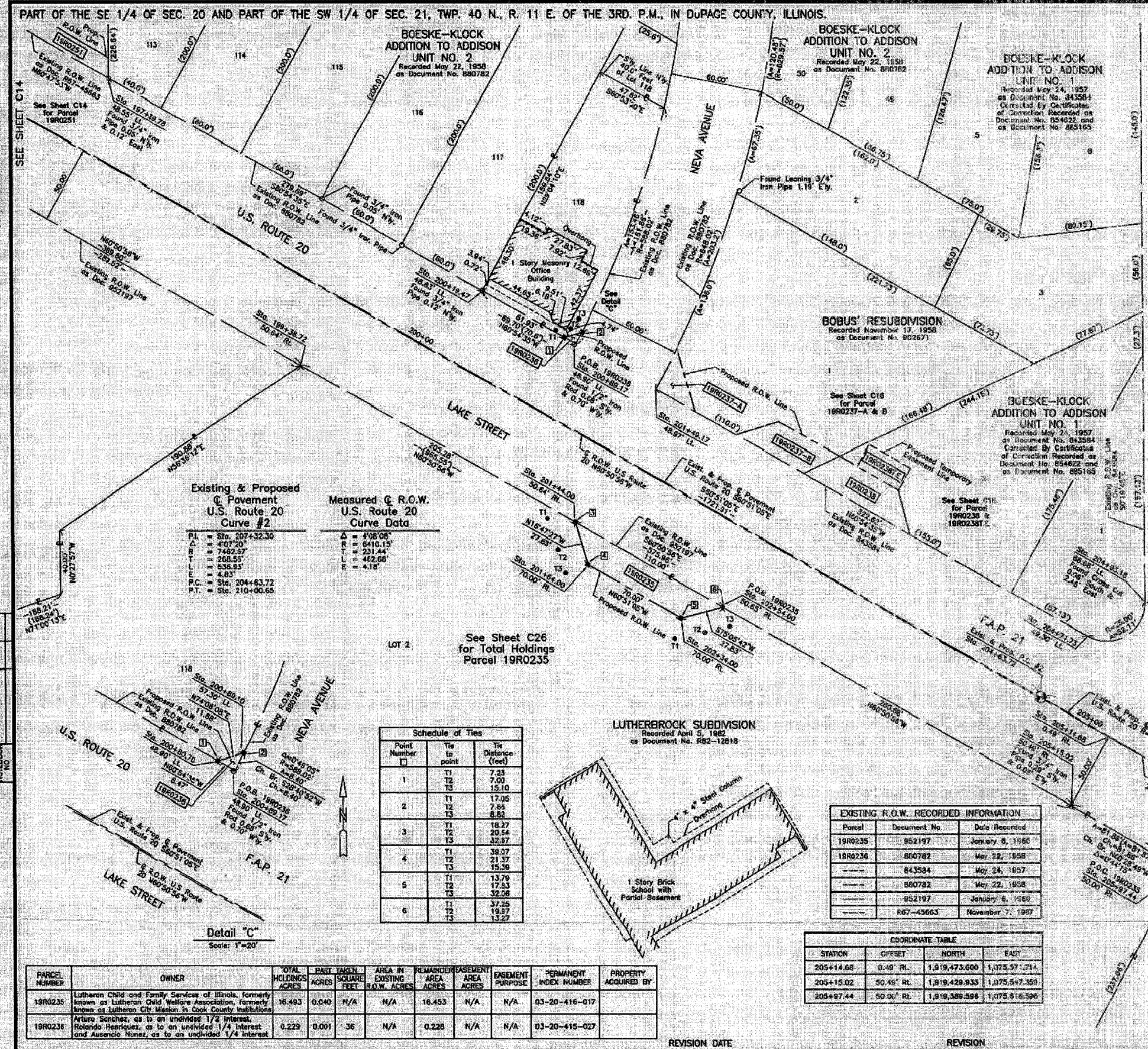


F.A.U. RTE.	SECTION	COUNTY	TOTAL SHEETS	SHEET NO.
3537	5Y-R-4	DUPAGE	37/37	173
FED. ROAD DIST. NO. 1 ILLINOIS FED. AID PROJECT				
CONTRACT NO. 62235				



LEGEND

SECTION C14

SECTION C15

SECTION C16

SECTION C17

SECTION C18

SECTION C19

SECTION C20

SECTION C21

SECTION C22

SECTION C23

SECTION C24

SECTION C25

SECTION C26

SECTION C27

SECTION C28

SECTION C29

SECTION C30

SECTION C31

SECTION C32

SECTION C33

SECTION C34

SECTION C35

SECTION C36

SECTION C37

SECTION C38

SECTION C39

SECTION C40

SECTION C41

SECTION C42

SECTION C43

SECTION C44

SECTION C45

SECTION C46

SECTION C47

SECTION C48

SECTION C49

SECTION C50

SECTION C51

SECTION C52

SECTION C53

SECTION C54

SECTION C55

SECTION C56

SECTION C57

SECTION C58

SECTION C59

SECTION C60

SECTION C61

SECTION C62

SECTION C63

SECTION C64

SECTION C65

SECTION C66

SECTION C67

SECTION C68

SECTION C69

SECTION C70

SECTION C71

SECTION C72

SECTION C73

SECTION C74

SECTION C75

SECTION C76

SECTION C77

SECTION C78

SECTION C79

SECTION C80

SECTION C81

SECTION C82

SECTION C83

SECTION C84

SECTION C85

SECTION C86

SECTION C87

SECTION C88

SECTION C89

SECTION C90

SECTION C91

SECTION C92

SECTION C93

SECTION C94

SECTION C95

SECTION C96

SECTION C97

SECTION C98

SECTION C99

SECTION C100

BY	DATE
MADE	CHECKED
NOTED	NO.

Existing & Proposed U.S. Route 20 Curve #2

PI	= Sta. 207+32.30
TA	= 407.70'
R	= 7482.97'
T	= 268.53'
L	= 536.93'
C	= 4.83'
P.C.	= Sta. 204+63.72
P.T.	= Sta. 210+00.65

Measured Q. R.O.W. U.S. Route 20 Curve Data

Δ	= 498.00'
R	= 6410.15'
T	= 231.44'
L	= 462.68'
E	= 4.18'

Schedule of Ties

Point Number	Tie to point	Tie Distance (feet)
1	T1	7.23
	T2	7.00
	T3	15.10
2	T1	17.05
	T2	7.85
	T3	8.82
3	T1	18.27
	T2	20.54
	T3	32.97
4	T1	38.07
	T2	21.37
	T3	15.30
5	T1	13.79
	T2	17.93
	T3	32.08
6	T1	37.25
	T2	19.67
	T3	13.27

EXISTING R.O.W. RECORDED INFORMATION

Parcel	Document No.	Date Recorded
19R0235	952197	January 6, 1966
19R0236	800782	May 22, 1958
	843584	May 24, 1957
	890782	May 22, 1958
	952197	January 6, 1966
	867-43663	November 7, 1967

COORDINATE TABLE

STATION	OFFSET	NORTH	EAST
205+14.68	0.49' RL	1,919,473.600	1,075,571.214
205+15.02	50.49' RL	1,919,429.935	1,075,547.359
205+07.44	50.00' RL	1,919,389.598	1,075,616.596

COORDINATE TABLE

STATION	OFFSET	NORTH	EAST
197+38.78	46.50' LL	1,919,894.015	1,074,918.314
199+38.72	50.34' LL	1,919,710.492	1,075,044.349
200+18.47	46.83' LL	1,919,758.034	1,075,163.323
200+00.70	46.90' LL	1,919,728.263	1,075,216.833
200+08.10	57.30' LL	1,919,731.511	1,075,228.282
200+08.17	46.90' LL	1,919,724.146	1,075,224.232
201+44.00	50.64' RL	1,919,610.485	1,075,223.832
201+48.17	46.97' LL	1,919,694.975	1,075,278.864
201+54.00	70.00' RL	1,919,583.850	1,075,231.872
202+24.00	70.00' RL	1,919,549.755	1,075,292.807
202+54.00	50.68' RL	1,919,556.913	1,075,319.699
204+71.73	49.30' LL	1,919,538.124	1,075,558.283
204+03.18	86.86' UL	1,919,560.114	1,075,595.737

PARCEL NUMBER	OWNER	TOTAL HOLDINGS ACRES	PART TAKEN ACRES	AREA IN EXISTING R.O.W. ACRES	REMAINDER AREA ACRES	EASEMENT AREA ACRES	EASEMENT PURPOSE	PERMANENT INDEX NUMBER	PROPERTY ACQUIRED BY
19R0235	Lutheran Child and Family Services of Illinois, formerly known as Lutheran Child Welfare Association, formerly known as Lutheran Child Mission in Cook County institutions.	16.493	0.040	N/A	N/A	16.453	N/A	N/A	03-20-416-017
19R0236	Arturo Sanchez, as to an undivided 1/4 interest, Rolanda Henriquez, as to an undivided 1/4 interest and Ausencia Nunez, as to an undivided 1/4 interest	0.229	0.001	36	N/A	0.228	N/A	N/A	03-20-415-027

JORGENSEN & ASSOCIATES, INC.
120 PARK AVENUE
LAKE VILLA, ILLINOIS 60046
(815) 354-3371

SHEET 1 IS A COVER SHEET AND IS NOT RECORDED.

PLAT OF HIGHWAYS

STATE OF ILLINOIS
DEPARTMENT OF TRANSPORTATION
F.A.P. 21 (U.S. ROUTE 20)

SECTION 5Y-R-4
PROJECT
STATION 197+00 TO STATION 206+00
SCALE: 1"=30'

DUPAGE COUNTY
JOB NO. R-91-005-92
TO STATION 201+00
SHEET 015 OF 030

BUREAU OF LAND ACQUISITION
201 WEST CENTER COURT
SCHAUMBURG, ILLINOIS 60196