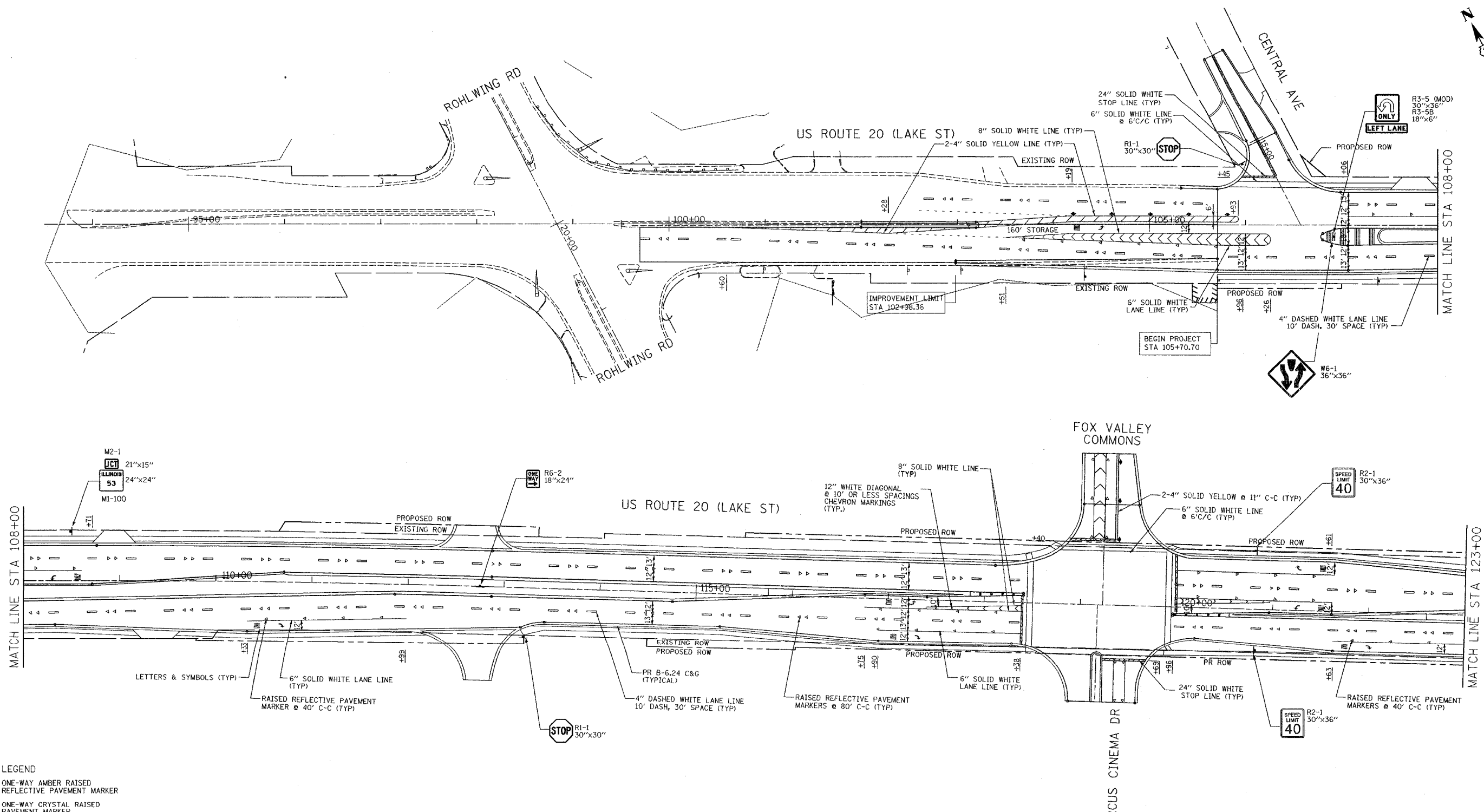
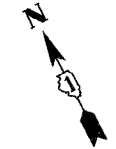
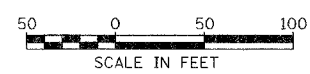


F.A.U. RTE.	SECTION	COUNTY	TOTAL SHEETS	SHEET NO.
3537	5Y-R-4	DUPAGE	797	27
STA 105+70.70		TO STA 123+00		
FED. ROAD DIST. NO. 1 ILLINOIS FED. AID PROJECT				
CONTRACT NO. 62295				



- LEGEND**
- ▶ ONE-WAY AMBER RAISED REFLECTIVE PAVEMENT MARKER
 - ▶ ONE-WAY CRYSTAL RAISED PAVEMENT MARKER
 - ◆ TWO-WAY AMBER RAISED REFLECTIVE PAVEMENT MARKER

- NOTE:**
1. DUAL REFLECTIVE PAVEMENT MARKERS ARE TO BE USED.
 2. FINAL PAVEMENT MARKINGS ON CONCRETE AND BITUMINOUS SURFACES SHALL BE POLYUREA PAVEMENT MARKINGS AND THERMOPLASTIC PAVEMENT MARKINGS RESPECTIVELY.
 3. REPLACE ALL PAVEMENT MARKINGS REMOVED DURING STAGING AS SHOWN ON THE PLAN OR AS DIRECTED BY THE ENGINEER.



REVISIONS	
NAME	DATE

ILLINOIS DEPARTMENT OF TRANSPORTATION

PAVEMENT MARKING & SIGNING PLAN

US ROUTE 20 (LAKE STREET)

SCALE: 1"=50'
DATE: 03/01/05

DRAWN BY: ALS
CHECKED BY: SR

I:\1111\0117\464_us20\cadd\464sp101-1b.dwg