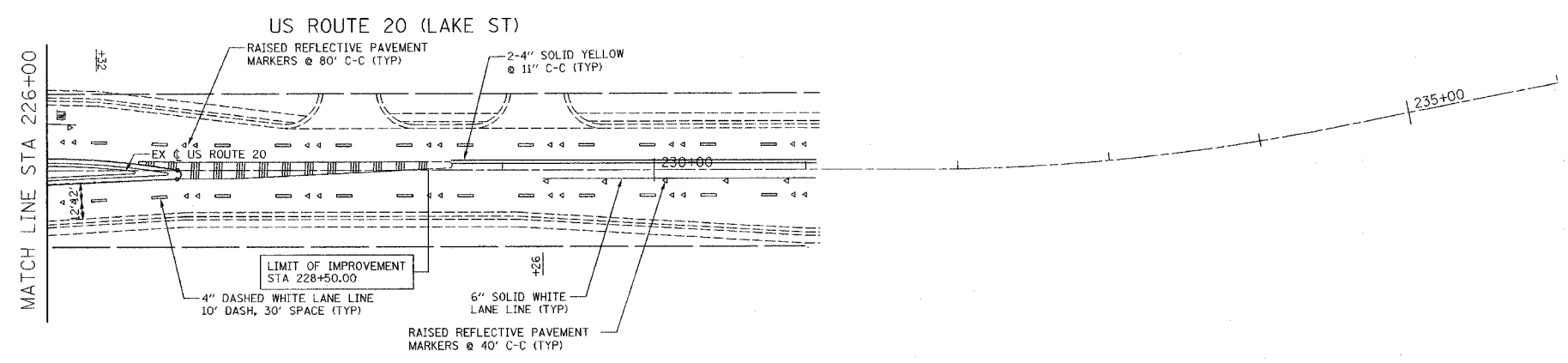
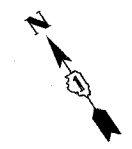
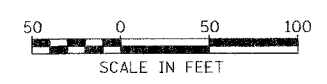


F.A.U. RTE.	SECTION	COUNTY	TOTAL SHEETS	SHEET NO.
3537	5Y-R-4	DUPAGE	397	220
STA. 226+00		TO STA. 228+50		
FED. ROAD DIST. NO. 1		ILLINOIS	FED. AID PROJECT	
CONTRACT NO. 62295				



- LEGEND**
- ▶ ONE-WAY AMBER RAISED REFLECTIVE PAVEMENT MARKER
 - ▷ ONE-WAY CRYSTAL RAISED PAVEMENT MARKER
 - ◆ TWO-WAY AMBER RAISED REFLECTIVE PAVEMENT MARKER

- NOTE:**
1. DUAL REFLECTIVE PAVEMENT MARKERS ARE TO BE USED.
 2. FINAL PAVEMENT MARKINGS ON CONCRETE AND BITUMINOUS SURFACES SHALL BE PERFORMED PLASTIC PAVEMENT MARKINGS AND THERMOPLASTIC PAVEMENT MARKINGS RESPECTIVELY.
 3. REPLACE ALL PAVEMENT MARKINGS REMOVED DURING STAGING AS SHOWN ON THE PLAN OR AS DIRECTED BY THE ENGINEER.



REVISIONS	
NAME	DATE

SHEET 6 OF 6

ILLINOIS DEPARTMENT OF TRANSPORTATION

PAVEMENT MARKING & SIGNING PLAN

US ROUTE 20 (LAKE STREET)

SCALE: 1"=50' DRAWN BY: ALS
DATE: 03/01/05 CHECKED BY: SR

P:\111_000171464_1120\0001464\03-10.dwg