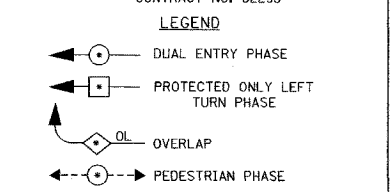
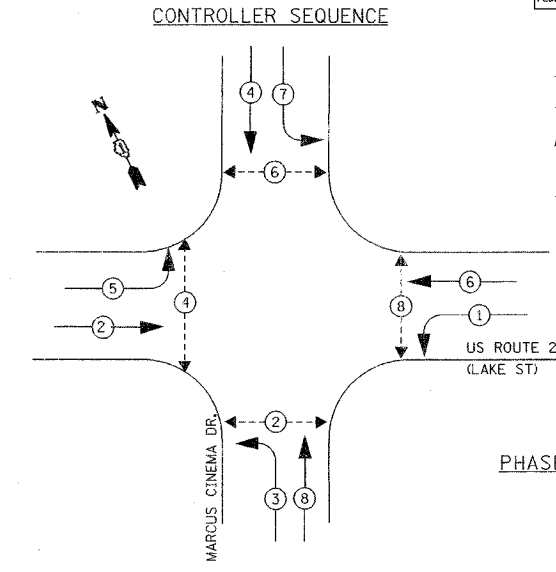


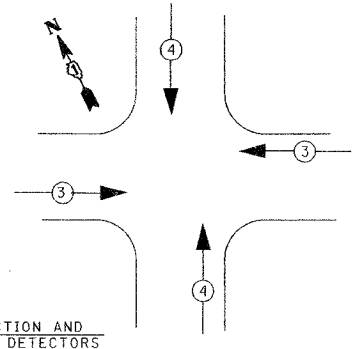
F.A. RTE. NO.	SECTION	COUNTY	TOTAL SHEETS	SHEET NO.
3537	5Y-R-4	DUPAGE	397	239
STA.	TO STA.			
FED. ROAD DIST. NO.	ILLINOIS	FED. AID PROJECT	CONTRACT NO. 62295	



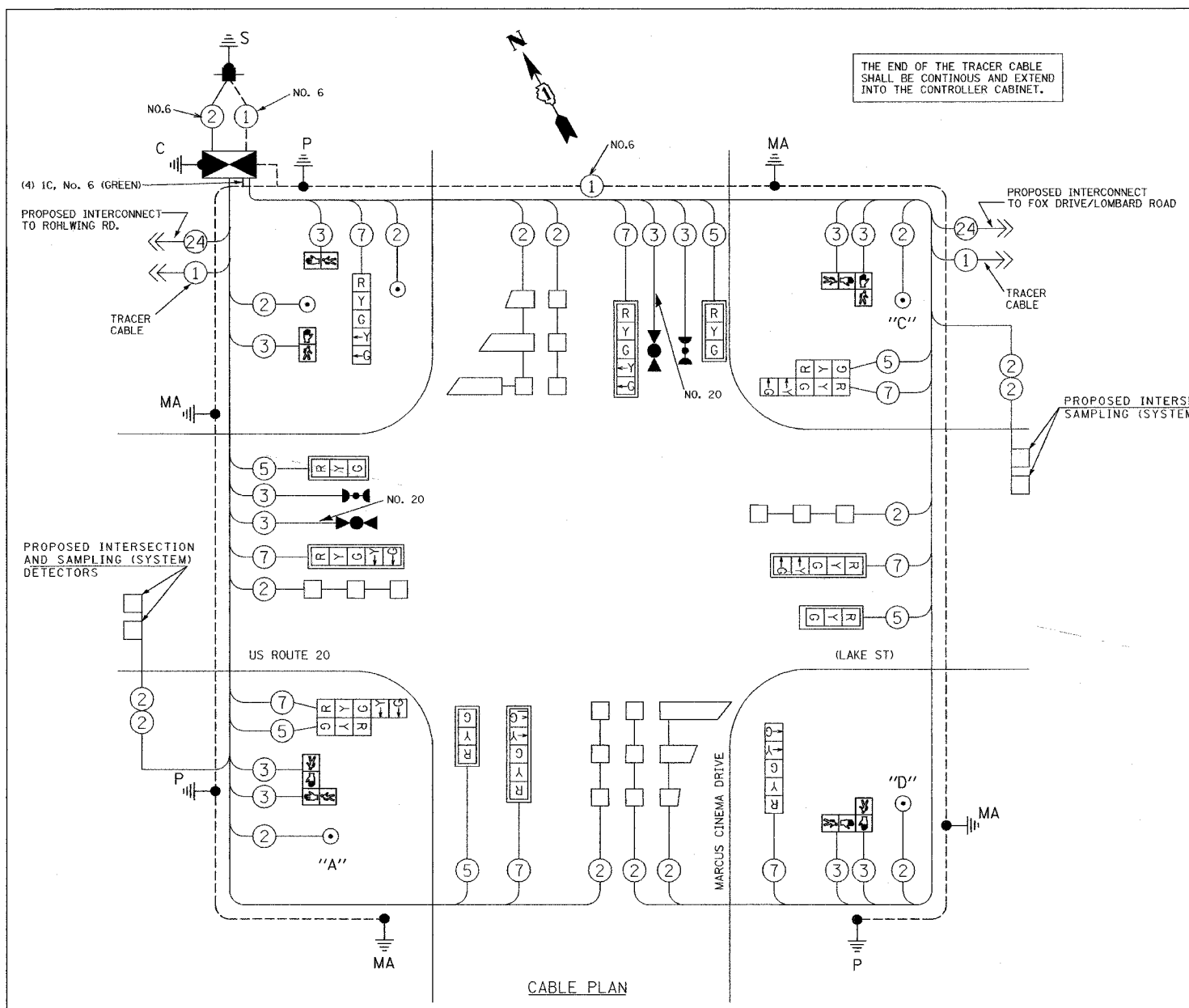
PHASE DESIGNATION DIAGRAM



EMERGENCY VEHICLE PREEMPTION SEQUENCE



EMERGENCY VEHICLE PREEMPTOR	3	4
MOVEMENT	←	↑↓



NOTES:
 PUSHBUTTON "A" SHALL PLACE A CALL TO PHASES 2 AND 4
 PUSHBUTTON "C" SHALL PLACE A CALL TO PHASES 6 AND 8
 PUSHBUTTON "D" SHALL PLACE A CALL TO PHASES 2 AND 8

CABLE PLAN LEGEND

EXISTING	PROPOSED	EXISTING	PROPOSED	DESCRIPTION
				8" (200mm) TRAFFIC SIGNAL SECTION
				12" (300mm) TRAFFIC SIGNAL SECTION
				12" (300mm) PEDESTRIAN SIGNAL SECTION
				12" (300mm) PEDESTRIAN SIGNAL SECTION
				CONTROLLER CABINET
				SERVICE INSTALLATION
				TELEPHONE CONNECTION
				MAGNETIC DETECTOR
				EMERGENCY VEHICLE LIGHT DETECTOR
				CONFIRMATION BEACON
				PUSHBUTTON DETECTOR
				VEHICLE DETECTOR, INDUCTION LOOP
				2 DENOTES NUMBER OF CONDUCTORS, ALL CABLE NO. 14 EXCEPT AS INDICATED. ALL LOOP DETECTOR CABLE TO BE SHIELDED.
				MICROWAVE VEHICLE SENSOR

TYPE	NO. LAMPS	WATTAGE (INCAND.)	WATTAGE (LED)	% OPERATION	TOTAL WATTAGE
SIGNAL (RED)	14	135	17	0.50	119.00
(YELLOW)	14	135	25	0.25	87.50
(GREEN)	14	135	15	0.25	52.50
ARROW	16	135	12	0.135	21.60
PED. SIGNAL	8	90	25	1.00	200.00
CONTROLLER	1	100	100	1.00	100.00
FLASHER				0.50	--
TOTAL =					580.60

FOUNDATION (DEPTH)	FT. (m)	CABLE SLACK	FT. (m)	VERTICAL	FT. (m)
TYPE A - POST	4 (1.2)	HANDHOLE	6.5 (2.0)	ALL FOUNDATIONS	3.5 (1.0)
D - CONTROLLER	4 (1.2)	DOUBLE HANDHOLE	13 (4.0)	MAST ARM (L) POLE	20'H-2'
E - M. ARM POLE		SIGNAL POST	2 (1.0)	6m+L-0.6m	
		24" (600mm)	10 (3.0)	CONTROLLER CAB.	1 (0.5)
		30" (750mm)	15 (4.6)	FIBER OPTIC	13 (4.0)
				ELECTRIC SERVICE	1 (0.5)
				GROUND CABLE	1 (0.5)
				POST MOUNTED	6 (1.8)

THE TRAFFIC SIGNAL CONTROL EQUIPMENT FOR THE FUTURE PROJECT SHALL BE "ECONOLITE" TO MATCH THE EXISTING ADJACENT SYSTEM.

NAME	DATE

ILLINOIS DEPARTMENT OF TRANSPORTATION
 CABLE PLAN AND PHASE DESIGNATION DIAGRAM
 US ROUTE 20 (LAKE STREET) & MARCUS CINEMA DR.
 SCALE: NONE
 DATE: 03/01/05
 DRAWN BY: MJH
 DESIGNED BY: MJH
 CHECKED BY: RN