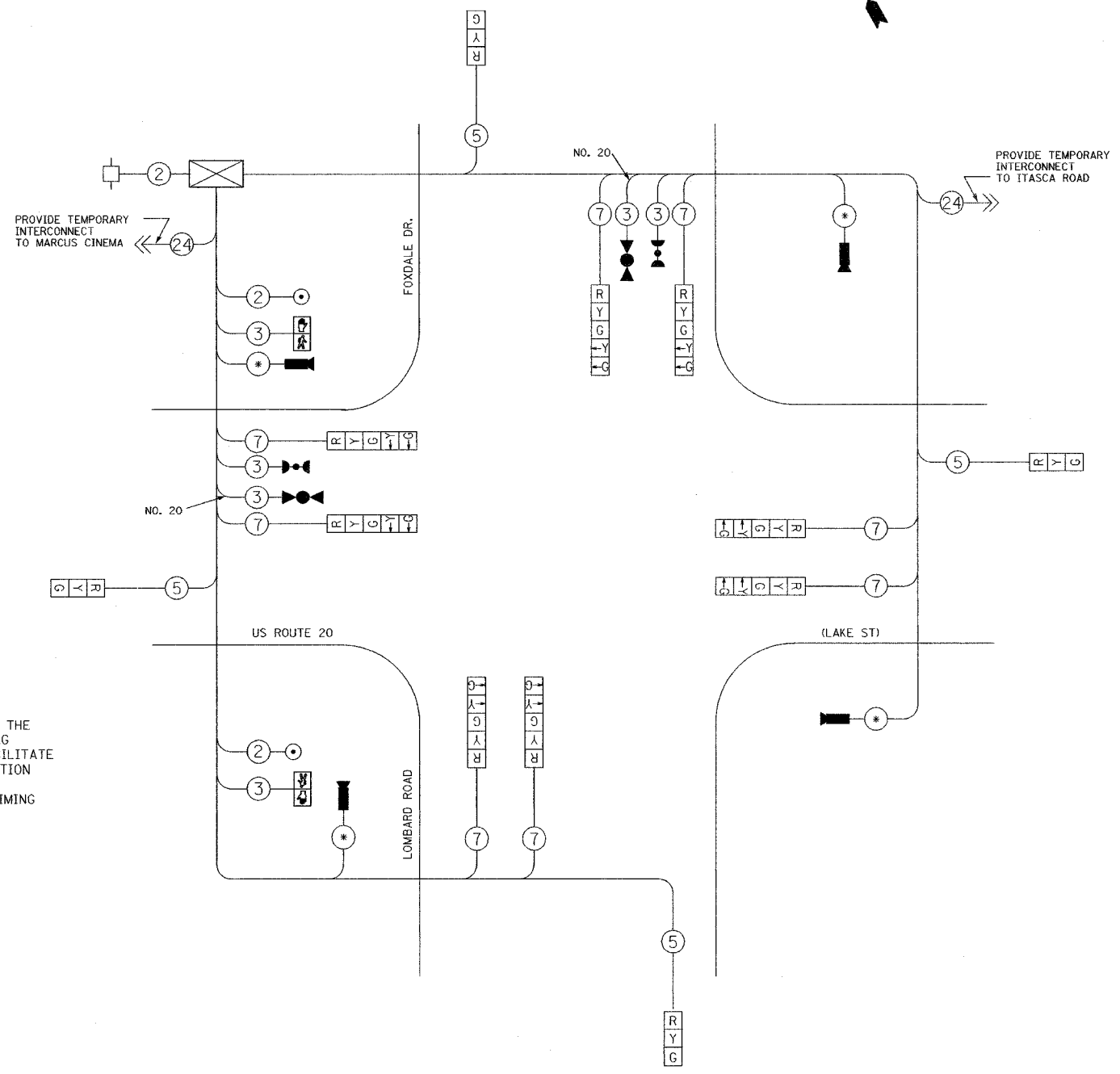


TEMPORARY CABLE DIAGRAM LEGEND

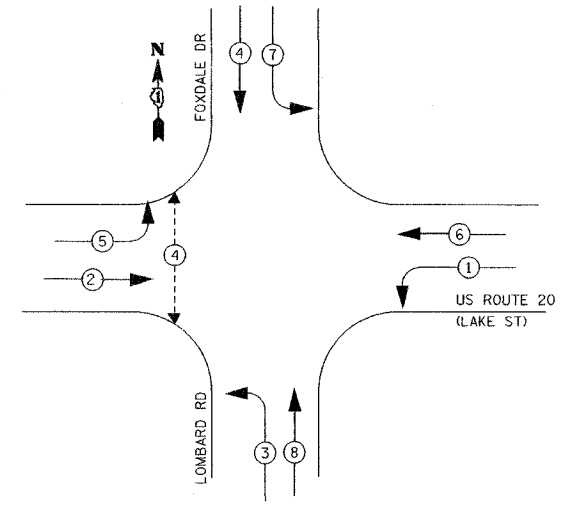
- R 12" (300mm) TRAFFIC SIGNAL SECTION
- X CONTROLLER CABINET
- SERVICE INSTALLATION
- 5 DENOTES NUMBER OF CONDUCTORS. ALL CABLE NO. 14, EXCEPT AS INDICATED.
- EMERGENCY VEHICLE LIGHT DETECTOR
- CONFIRMATION BEACON
- VEHICLE DETECTOR, INDUCTION LOOP
- PUSHBUTTON DETECTOR
- 12" (300mm) PEDESTRIAN SIGNAL SECTION
- VIDEO VEHICLE SENSOR
- 24 FIBER OPTIC CABLE IN CONDUIT NO. 62.5/125 MM12F SM12F
- * AS PER MANUFACTURER'S RECOMMENDATION



TEMPORARY CABLE PLAN
NOT TO SCALE

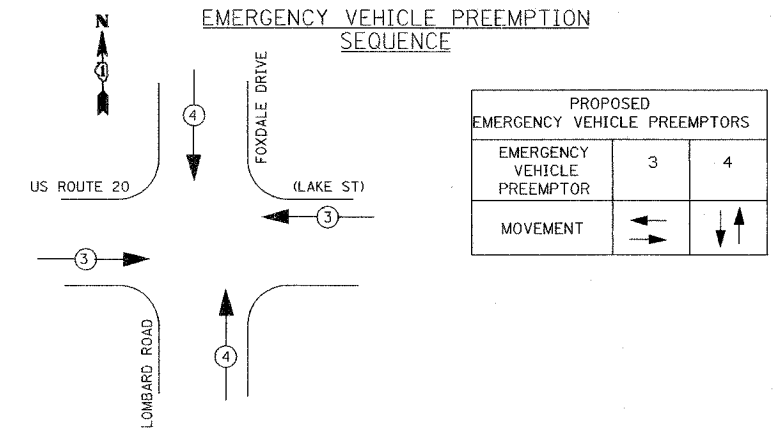
SIGNAL OPERATION NOTE:
OPPOSING LEFT-TURN MOVEMENTS MAY NOT BE POSSIBLE IN ALL STAGES OF CONSTRUCTION. THE CONTRACTOR SHALL ADJUST THE TEMPORARY TRAFFIC SIGNAL AS DIRECTED BY THE ENGINEER, TO PROVIDE ALTERNATE PHASING (E.G., LEAD/LAG LEFT-TURNS, PROTECTED ONLY LEFT TURNS, ETC.), TO FACILITATE TRAFFIC FLOW. THIS WORK MAY INCLUDE REPLACING 3-SECTION HEADS WITH 5-SECTION HEADS, CONTROLLER/CABINET MODIFICATIONS AND ADJUSTMENTS, AND LOCAL /SYSTEM TIMING ADJUSTMENTS.

TEMPORARY CONTROLLER SEQUENCE



- LEGEND**
- DUAL ENTRY PHASE
 - PROTECTED ONLY LEFT TURN PHASE
 - OVERLAP
 - PEDESTRIAN PHASE
- PHASE DESIGNATION DIAGRAM**
SEE SIGNAL OPERATION NOTE, THIS SHEET.

EMERGENCY VEHICLE PREEMPTION SEQUENCE



I.D.O.T. TRAFFIC SIGNAL INSTALLATION ELECTRICAL SERVICE REQUIREMENTS					TOTAL WATTAGE
TYPE	NO. LAMPS	WATTAGE INCAND.	WATTAGE LED	% OPERATION	
SIGNAL (RED)	12	135	17	0.50	810.00
(YELLOW)	12	135	25	0.25	405.00
(GREEN)	12	135	15	0.25	405.00
ARROW	16	135	12	0.10	216.00
PED. SIGNAL	2	90	25	1.00	180.00
CONTROLLER	1	100	100	1.00	100.00
FLASHER				0.50	--
ENERGY COSTS TO:					TOTAL = 2116.00

ILLINOIS DEPARTMENT OF TRANSPORTATION
201 WEST CENTER COURT
SCHAUMBURG, ILLINOIS 60196-1096
CONTACT: KATHY NYSTROM
PHONE: (847) 816-5489
COMPANY: COM. ED.

THE TRAFFIC SIGNAL CONTROL EQUIPMENT FOR THE FUTURE PROJECT SHALL BE "ECONOLITE" TO MATCH THE EXISTING ADJACENT SYSTEM.

REVISIONS		ILLINOIS DEPARTMENT OF TRANSPORTATION
NAME	DATE	
		TEMPORARY CABLE PLAN & TEMPORARY PHASE DESIGNATION DIAGRAM US ROUTE 20 (LAKE ST) & LOMBARD ROAD DRAWN BY: MJH DESIGNED BY: MJH CHECKED BY: RN SCALE: NONE DATE: 03/01/05