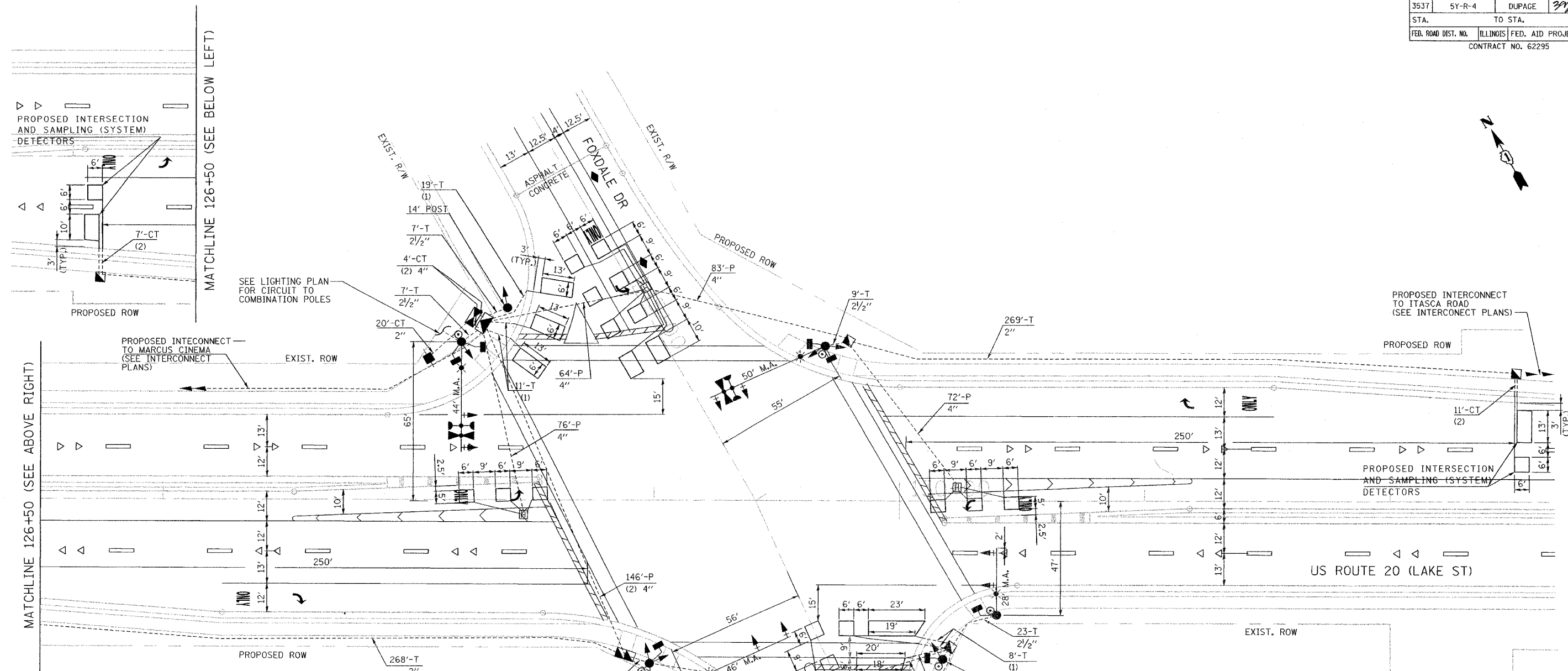
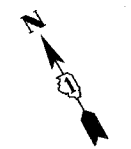


F.A.P. ROUTE	SECTION	COUNTY	TOTAL SHEETS	SHEET NO.
3537	5Y-R-4	DUPAGE	277	242
STA.		TO STA.		
FED. ROAD DIST. NO.	ILLINOIS FED. AID PROJECT	CONTRACT NO. 62295		



TRAFFIC SIGNAL LEGEND

	PROPOSED	EXISTING		PROPOSED	EXISTING
CONTROLLER			DETECTOR LOOP		
SERVICE INSTALLATION			CAST IRON JUNCTION BOX		
SIGNAL HEAD			EMERGENCY VEHICLE SYSTEM DETECTOR		
SIGNAL HEAD WITH BACKPLATE			CONFIRMATION BEACON		
SIGNAL HEAD, PEDESTRIAN			SIGNAL HEAD OPTICALLY PROGRAMMED		
SIGNAL POST			CONDUIT SPLICE		
COMBINATION MAST ARM ASSEMBLY AND POLE, STEEL, WITH LUMINAIRE			WOOD POLE		
MAST ARM ASSEMBLY AND POLE, ALUMINUM			RACEWAY FOR MAGNETIC DETECTOR, TYPE I OR TYPE II		
COMMON TRENCH	CT		VEHICLE DETECTOR, NON COMPENSATED MAGNETIC TYPE		
UNIT DUCT	UD		RAILROAD CONTROL CABINET		
HANDHOLE			ILLUMINATED SIGN, FIBER OPTIC "NO LEFT TURN"		
HEAVY DUTY HANDHOLE			ILLUMINATED SIGN, FIBER OPTIC "NO RIGHT TURN"		
DOUBLE HANDHOLE			TELEPHONE CONNECTION		
G.S. CONDUIT IN TRENCH OR PUSHED					
PEDESTRIAN PUSHBUTTON DETECTOR					

RESTORATION OF WORK AREA. RESTORATION OF THE TRAFFIC SIGNAL WORK AREA SHALL BE INCIDENTAL TO THE RELATED PAY ITEM SUCH AS FOUNDATION, CONDUIT, HANDHOLE, TRENCH AND BACKFILL, ETC., AND NO EXTRA COMPENSATION SHALL BE ALLOWED. ALL ROADWAY SURFACES SUCH AS SHOULDERS, MEDIANS, SIDEWALKS, PAVEMENT, SHALL BE REPLACED IN KIND. ALL DAMAGE TO MOWED LAWNS SHALL BE REPLACED WITH AN APPROVED SOD, AND ALL DAMAGE TO UNMOWED FIELDS SHALL BE SEEDED IN ACCORDANCE WITH STANDARD SPECIFICATIONS 252 AND 250 RESPECTIVELY.

THE TRAFFIC SIGNAL CONTROL EQUIPMENT FOR THE FUTURE PROJECT SHALL BE "ECONOLITE" TO MATCH THE EXISTING ADJACENT SYSTEM.

REVISIONS	
NAME	DATE

ILLINOIS DEPARTMENT OF TRANSPORTATION
TRAFFIC SIGNAL INSTALLATION PLAN
 US ROUTE 20 (LAKE ST) & LOMBARD ROAD
 DRAWN BY: MJH
 DESIGNED BY: MJH
 CHECKED BY: RN
 SCALE: 1"=20'
 DATE: 03/01/05

J:\11_00171465_020\dwg\1464ent101-1b.dwg