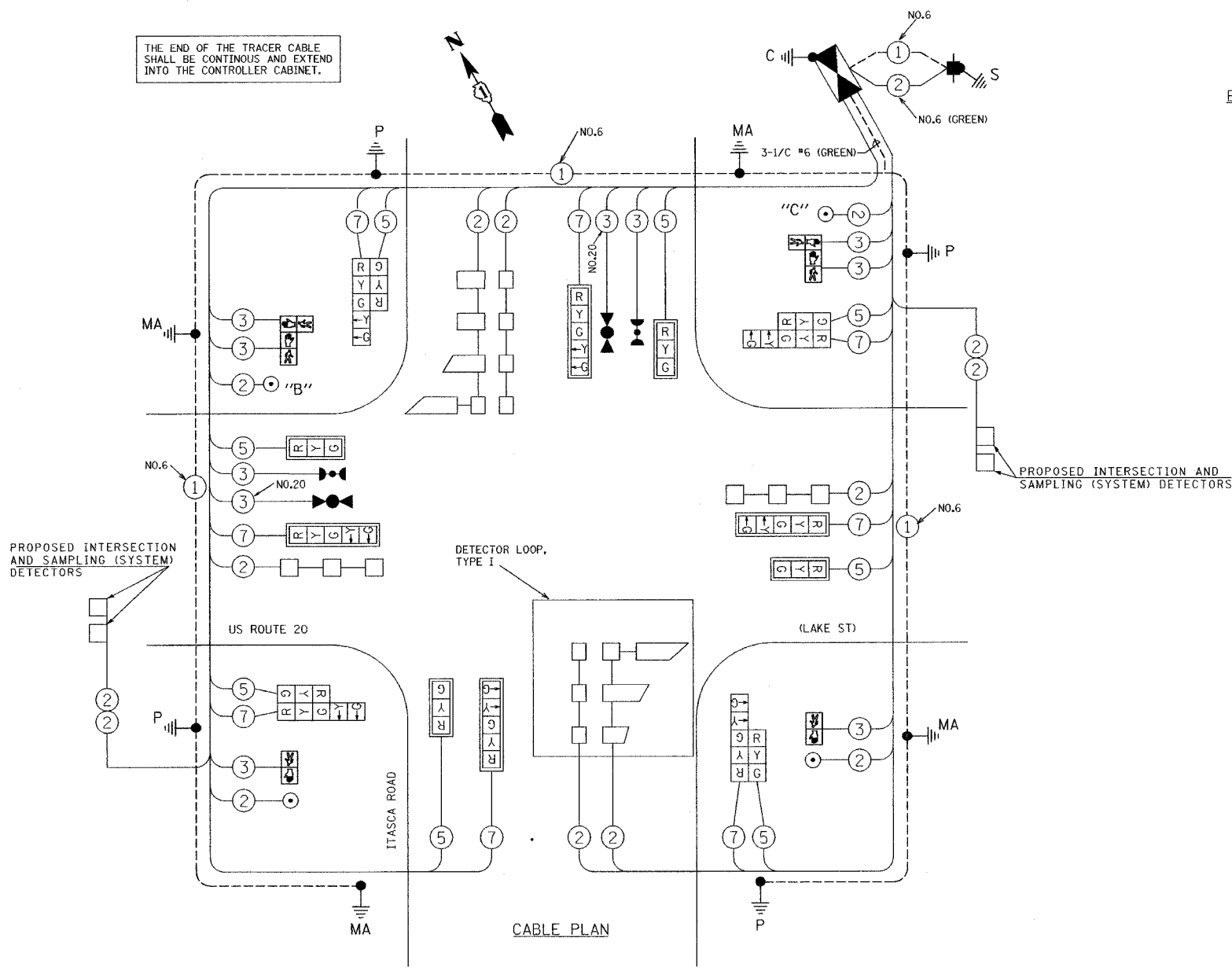
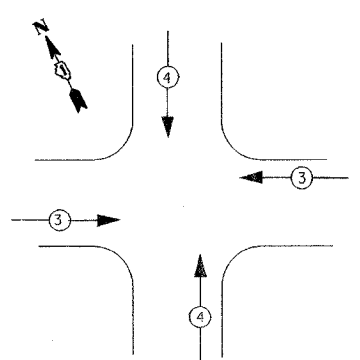


F.A. RTE.	SECTION	COUNTY	TOTAL SHEETS	SHEET NO.
3537	5Y-R-4	DUPAGE	297	245
STA.		TO STA.		
FED. ROAD DIST. NO.		ILLINOIS FED. AID PROJECT		
CONTRACT NO. 62295				

THE END OF THE TRACER CABLE SHALL BE CONTINUOUS AND EXTEND INTO THE CONTROLLER CABINET.

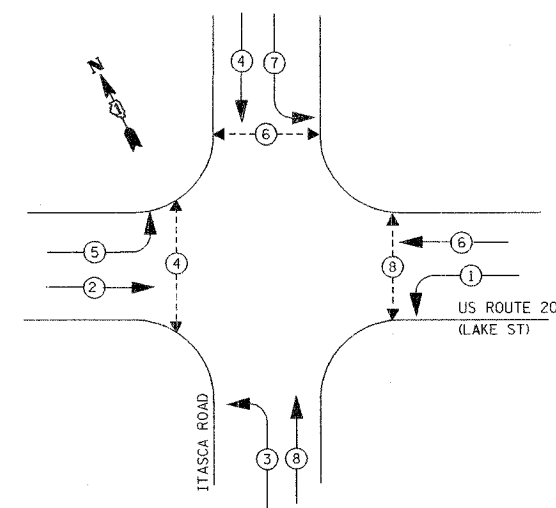


EMERGENCY VEHICLE PREEMPTION SEQUENCE



PROPOSED EMERGENCY VEHICLE PREEMPTORS	
EMERGENCY VEHICLE PREEMPTOR	3 4
MOVEMENT	← → ↑ ↓

CONTROLLER SEQUENCE



- LEGEND
- DUAL ENTRY PHASE
  - PROTECTED ONLY LEFT TURN PHASE
  - OVERLAP
  - PEDESTRIAN PHASE

PHASE DESIGNATION DIAGRAM

CABLE PLAN LEGEND

- |          |          |          |          |   |
|----------|----------|----------|----------|---|
| EXISTING | PROPOSED | EXISTING | PROPOSED |   |
|          |          |          |          | SIGNAL FACE WITH BACKPLATE, "P" INDICATES PROGRAMMED HEAD           |
|          |          |          |          | RAILROAD CONTROL CABINET  |
|          |          |          |          | ILLUMINATED SIGN, FIBER OPTIC "NO LEFT TURN"                        |
|          |          |          |          | ILLUMINATED SIGN, FIBER OPTIC "NO RIGHT TURN"                       |
|          |          |          |          | GROUND ROD AT HANDHOLE (H), DOUBLE HANDHOLE (H), OR CONTROLLER (C). |
|          |          |          |          | GROUND ROD AT POST (P), OR MAST ARM POLE (MA).                      |
|          |          |          |          | GROUND ROD AT ELECTRIC SERVICE INSTALLATION                         |
|          |          |          |          | GROUND CABLE IN CONDUIT NO. 6 SOLID COPPER (GREEN)                  |
|          |          |          |          | FIBER OPTIC CABLE IN CONDUIT NO. 62.5/125 MM12F SM12F               |
|          |          |          |          | MICROWAVE VEHICLE SENSOR  |
|          |          |          |          |   |
|          |          |          |          |   |
|          |          |          |          |   |

NOTES:  
 PUSHBUTTON "B" SHALL PLACE A CALL TO PHASES 4 AND 6  
 PUSHBUTTON "C" SHALL PLACE A CALL TO PHASES 6 AND 8

I.D.O.T. TRAFFIC SIGNAL INSTALLATION ELECTRICAL SERVICE REQUIREMENTS					TOTAL WATTAGE
TYPE	NO. LAMPS	WATTAGE INCAND.	WATTAGE LED	% OPERATION	
SIGNAL (RED)	16	135	17	0.50	136.00
(YELLOW)	16	135	25	0.25	100.00
(GREEN)	16	135	15	0.25	60.00
ARROW	16	135	12	0.10	19.20
PED. SIGNAL	6	90	25	1.00	150.00
CONTROLLER	1	100	100	1.00	100.00

ENERGY COSTS TO: TOTAL = 565.2  
 ILLINOIS DEPARTMENT OF TRANSPORTATION  
 201 WEST CENTER COURT  
 SCHAMBURG, ILLINOIS 60196-1096  
 ENERGY SUPPLY CONTACT: KATHY NYSTROM  
 PHONE: (847) 816-5489  
 COMPANY: COM. ED.

FOUNDATION (DEPTH)	FT. (m)	CABLE SLACK	FT. (m)	VERTICAL	FT. (m)
HANDHOLE	4 (1.2)	HANDHOLE	6.5 (2.0)	ALL FOUNDATIONS	3.5 (1.0)
D - CONTROLLER	4 (1.2)	DOUBLE HANDHOLE	13 (4.0)	MAST ARM (L) POLE	20'H-2"
E - M. ARM POLE	2 (1.0)	SIGNAL POST	2 (1.0)	(6m-H-0.6m)	
24" (600mm)	10 (3.0)	CONTROLLER CAB.	1 (0.5)	BRACKET MOUNTED	13 (4.0)
30" (750mm)	15 (4.6)	FIBER OPTIC	13 (4.0)	PED. PUSHBUTTON	4 (1.2)
		ELECTRIC SERVICE	1 (0.5)	ELECTRIC SERVICE	13.5 (4.1)
		GROUND CABLE	1 (0.5)	SERVICE TO GROUND	13.5 (4.1)
				POST MOUNTED	6 (1.8)

THE TRAFFIC SIGNAL CONTROL EQUIPMENT FOR THE FUTURE PROJECT SHALL BE "EDMOLITE" TO MATCH THE EXISTING ADJACENT SYSTEM.

REVISIONS	
NAME	DATE

ILLINOIS DEPARTMENT OF TRANSPORTATION  
 CABLE PLAN AND PHASE DESIGNATION DIAGRAM  
 US ROUTE 20 (LAKE STREET) & ITASCA ROAD  
 DRAWN BY: MJH  
 DESIGNED BY: MJH  
 CHECKED BY: RN  
 SCALE: NONE  
 DATE: 03/01/05