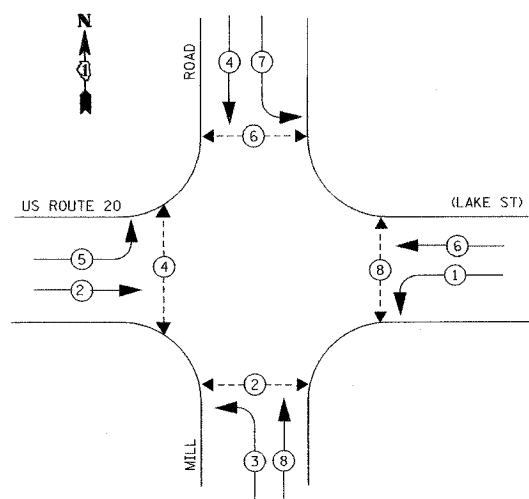


TEMPORARY CONTROLLER SEQUENCE



LEGEND

- ◀ (with circle) DUAL ENTRY PHASE
- ◀ (with square) PROTECTED ONLY LEFT TURN PHASE
- ◇ OL OVERLAP
- ◀ (with circle) PEDESTRIAN PHASE

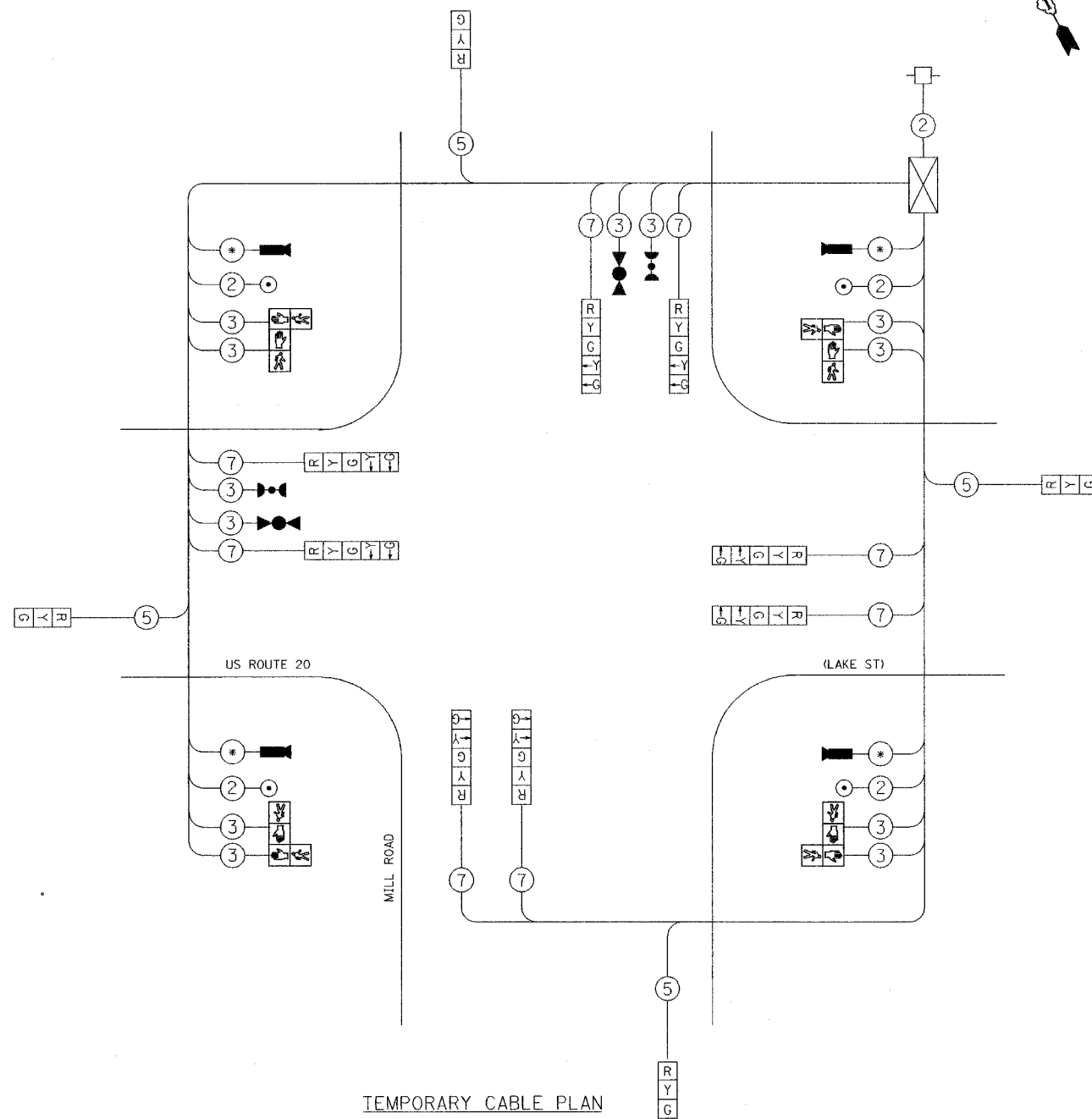
PHASE DESIGNATION DIAGRAM

SEE SIGNAL OPERATION NOTE, THIS SHEET.

SIGNAL OPERATION NOTE:
 OPPOSING LEFT-TURN MOVEMENTS MAY NOT BE POSSIBLE IN ALL STAGES OF CONSTRUCTION. THE CONTRACTOR SHALL ADJUST THE TEMPORARY TRAFFIC SIGNAL AS DIRECTED BY THE ENGINEER, TO PROVIDE ALTERNATE PHASING (E.G., LEAD/LAG LEFT-TURNS, PROTECTED ONLY LEFT TURNS, ETC.), TO FACILITATE TRAFFIC FLOW. THIS WORK MAY INCLUDE REPLACING 3-SECTION HEADS WITH 5-SECTION HEADS, CONTROLLER/CABINET MODIFICATIONS AND ADJUSTMENTS, AND LOCAL /SYSTEM TIMING ADJUSTMENTS.

TEMPORARY CABLE DIAGRAM LEGEND

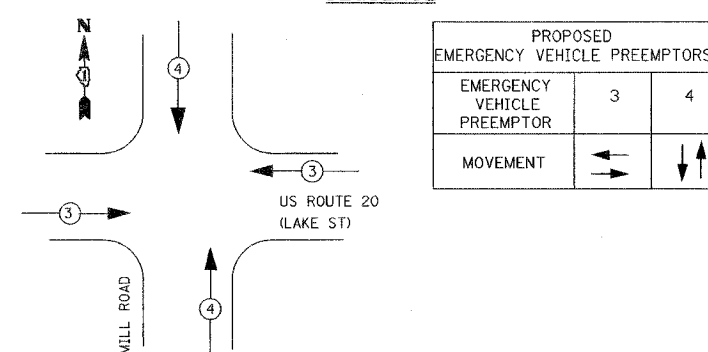
- R 12" (300mm) TRAFFIC SIGNAL SECTION
- ☒ CONTROLLER CABINET
- SERVICE INSTALLATION
- ⑤ DENOTES NUMBER OF CONDUCTORS. ALL CABLE NO. 14, EXCEPT AS INDICATED.
- ▶ EMERGENCY VEHICLE LIGHT DETECTOR
- CONFIRMATION BEACON
- VEHICLE DETECTOR, INDUCTION LOOP
- PUSHBUTTON DETECTOR
- ▶ 12" (300mm) PEDESTRIAN SIGNAL SECTION
- ▶ VIDEO VEHICLE SENSOR
- ④ FIBER OPTIC CABLE IN CONDUIT NO. 62.5/125 MM12F SM12F
- AS PER MANUFACTURER'S RECOMMENDATION



TEMPORARY CABLE PLAN

NOT TO SCALE

EMERGENCY VEHICLE PREEMPTION SEQUENCE



I.D.O.T. TRAFFIC SIGNAL INSTALLATION ELECTRICAL SERVICE REQUIREMENTS					TOTAL WATTAGE
TYPE	NO. LAMPS	WATTAGE (INCAND.)	WATTAGE LED	*OPERATION	
SIGNAL (RED)	12	135	17	0.50	810.00
(YELLOW)	12	135	25	0.25	405.00
(GREEN)	12	135	15	0.25	405.00
ARROW	16	135	12	0.10	216.00
PED. SIGNAL	8	90	25	1.00	720.00
CONTROLLER	1	100	100	1.00	100.00
FLASHER				0.50	--
ENERGY COSTS TO:					TOTAL = 2656.00
ILLINOIS DEPARTMENT OF TRANSPORTATION 201 WEST CENTER COURT SCHUMBERG, ILLINOIS 60196-1096 ENERGY SUPPLY CONTACT: KATHY NYSTROM PHONE: (847) 816-5489 COMPANY: COM. ED.					

REVISIONS		ILLINOIS DEPARTMENT OF TRANSPORTATION
NAME	DATE	
		TEMPORARY CABLE PLAN & TEMPORARY PHASE DESIGNATION DIAGRAM US ROUTE 20 (LAKE ST) & MILL ROAD DRAWN BY: MJH DESIGNED BY: MJH CHECKED BY: RN SCALE: NONE DATE: 03/01/05