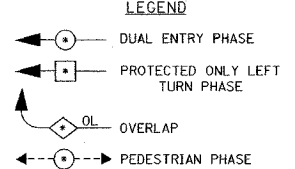
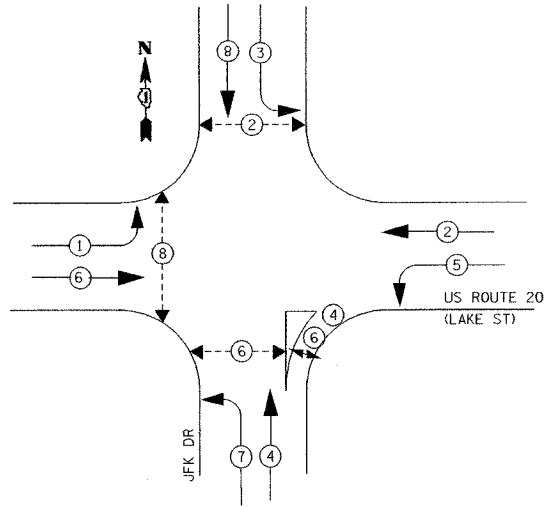


TEMPORARY CONTROLLER SEQUENCE

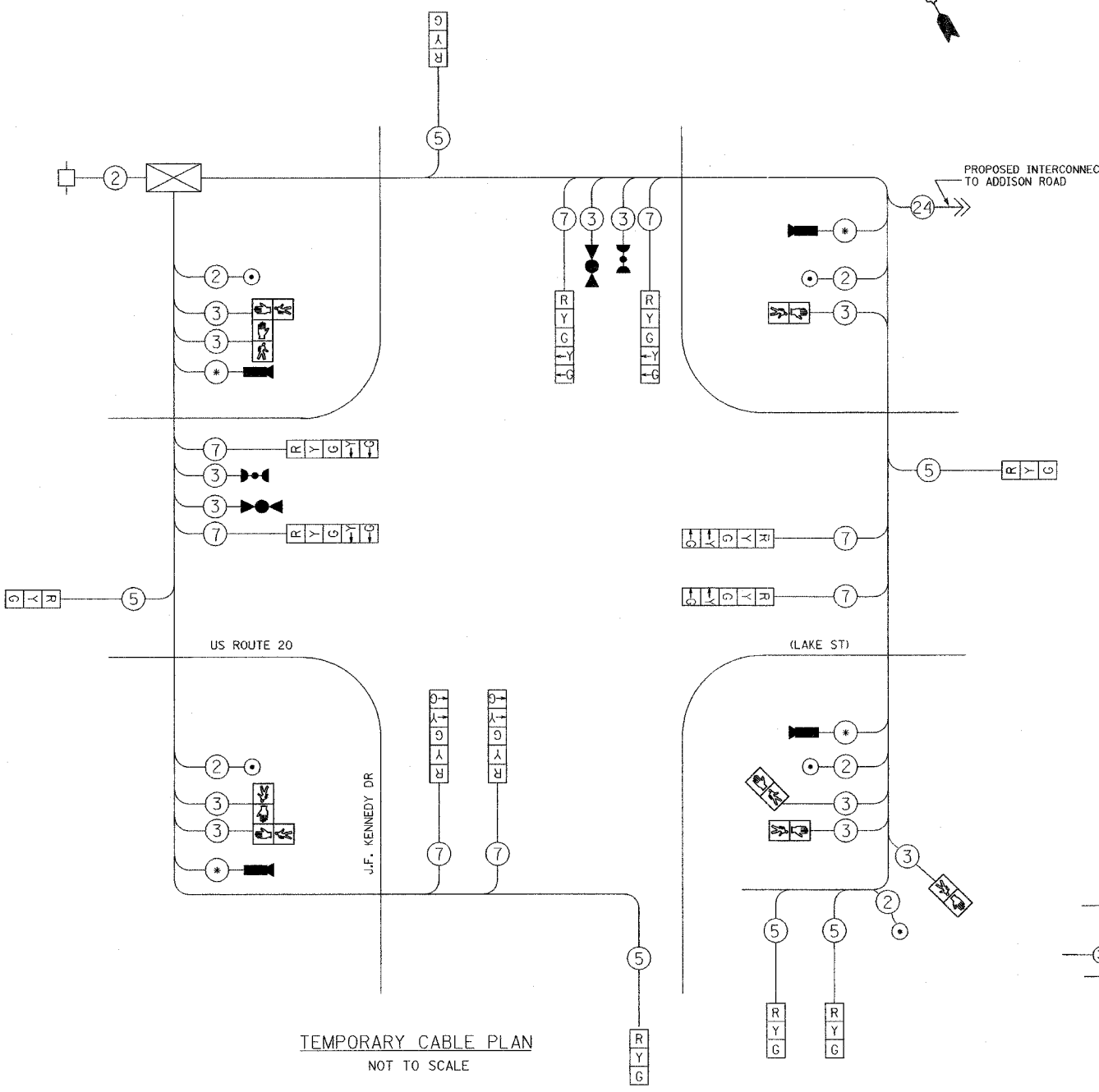


**PHASE DESIGNATION DIAGRAM**  
SEE SIGNAL OPERATION NOTE, THIS SHEET.

**SIGNAL OPERATION NOTE:**  
OPPOSING LEFT-TURN MOVEMENTS MAY NOT BE POSSIBLE IN ALL STAGES OF CONSTRUCTION. THE CONTRACTOR SHALL ADJUST THE TEMPORARY TRAFFIC SIGNAL AS DIRECTED BY THE ENGINEER, TO PROVIDE ALTERNATE PHASING (E.G., LEAD/LAG LEFT-TURNS, PROTECTED ONLY LEFT TURNS, ETC.), TO FACILITATE TRAFFIC FLOW. THIS WORK MAY INCLUDE REPLACING 3-SECTION HEADS WITH 5-SECTION HEADS, CONTROLLER/CABINET MODIFICATIONS AND ADJUSTMENTS, AND LOCAL /SYSTEM TIMING ADJUSTMENTS.

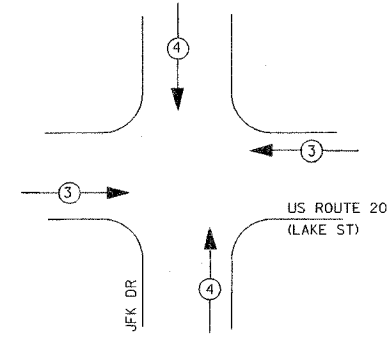
TEMPORARY CABLE DIAGRAM LEGEND

- 12" (300mm) TRAFFIC SIGNAL SECTION
- CONTROLLER CABINET
- SERVICE INSTALLATION
- DENOTES NUMBER OF CONDUCTORS. ALL CABLE NO. 14, EXCEPT AS INDICATED.
- EMERGENCY VEHICLE LIGHT DETECTOR
- CONFIRMATION BEACON
- VEHICLE DETECTOR, INDUCTION LOOP
- PUSHBUTTON DETECTOR
- 12" (300mm) PEDESTRIAN SIGNAL SECTION
- VIDEO VEHICLE SENSOR
- FIBER OPTIC CABLE IN CONDUIT NO. 62.5/125 MM12F SM12F
- AS PER MANUFACTURER'S RECOMMENDATION



TEMPORARY CABLE PLAN  
NOT TO SCALE

EMERGENCY VEHICLE PREEMPTION SEQUENCE



PROPOSED EMERGENCY VEHICLE PREEMPTORS		
EMERGENCY VEHICLE PREEMPTOR	3	4
MOVEMENT	←	↑

I.D.O.T. TRAFFIC SIGNAL INSTALLATION ELECTRICAL SERVICE REQUIREMENTS					TOTAL WATTAGE
TYPE	NO. LAMPS	WATTAGE (INCAND.)	WATTAGE LED	% OPERATION	
SIGNAL (RED)	12	135	17	0.50	810.00
(YELLOW)	12	135	25	0.25	405.00
(GREEN)	12	135	15	0.25	405.00
ARROW	16	135	12	0.10	216.00
PED. SIGNAL	8	90	25	1.00	720.00
CONTROLLER	1	100	100	1.00	100.00
FLASHER				0.50	--
TOTAL =					2656.00

FOUNDATION (DEPTH)	FT. (m)	CABLE SLACK	FT. (m)	VERTICAL	FT. (m)
TYPE A - POST	4 (1.2)	HANDHOLE	6.5 (2.0)	ALL FOUNDATIONS	3.5 (1.0)
D - CONTROLLER	4 (1.2)	DOUBLE HANDHOLE	13 (4.0)	MAST ARM (L) POLE	20'H-2"
E - M. ARM POLE		SIGNAL POST	2 (1.0)	16mH-0.6m=	
24" (600mm)	10 (3.0)	CONTROLLER CAB.	1 (0.5)	BRACKET MOUNTED	13 (4.0)
30" (750mm)	15 (4.6)	FIBER OPTIC	13 (4.0)	PED. PUSHBUTTON	4 (1.2)
		ELECTRIC SERVICE	1 (0.5)	ELECTRIC SERVICE	13.5 (4.1)
		GROUND CABLE	1 (0.5)	SERVICE TO GROUND	13.5 (4.1)
				POST MOUNTED	6 (1.8)

THE TRAFFIC SIGNAL CONTROL EQUIPMENT FOR THE FUTURE PROJECT SHALL BE "EAGLE" TO MATCH THE EXISTING ADJACENT SYSTEM.

REVISIONS	
NAME	DATE

ILLINOIS DEPARTMENT OF TRANSPORTATION  
**TEMPORARY CABLE PLAN & TEMPORARY PHASE DESIGNATION DIAGRAM**  
US ROUTE 20 (LAKE ST) & JOHN F. KENNEDY DR  
DRAWN BY: MJH  
DESIGNED BY: MJH  
CHECKED BY: RN  
SCALE: NONE  
DATE: 03/01/05