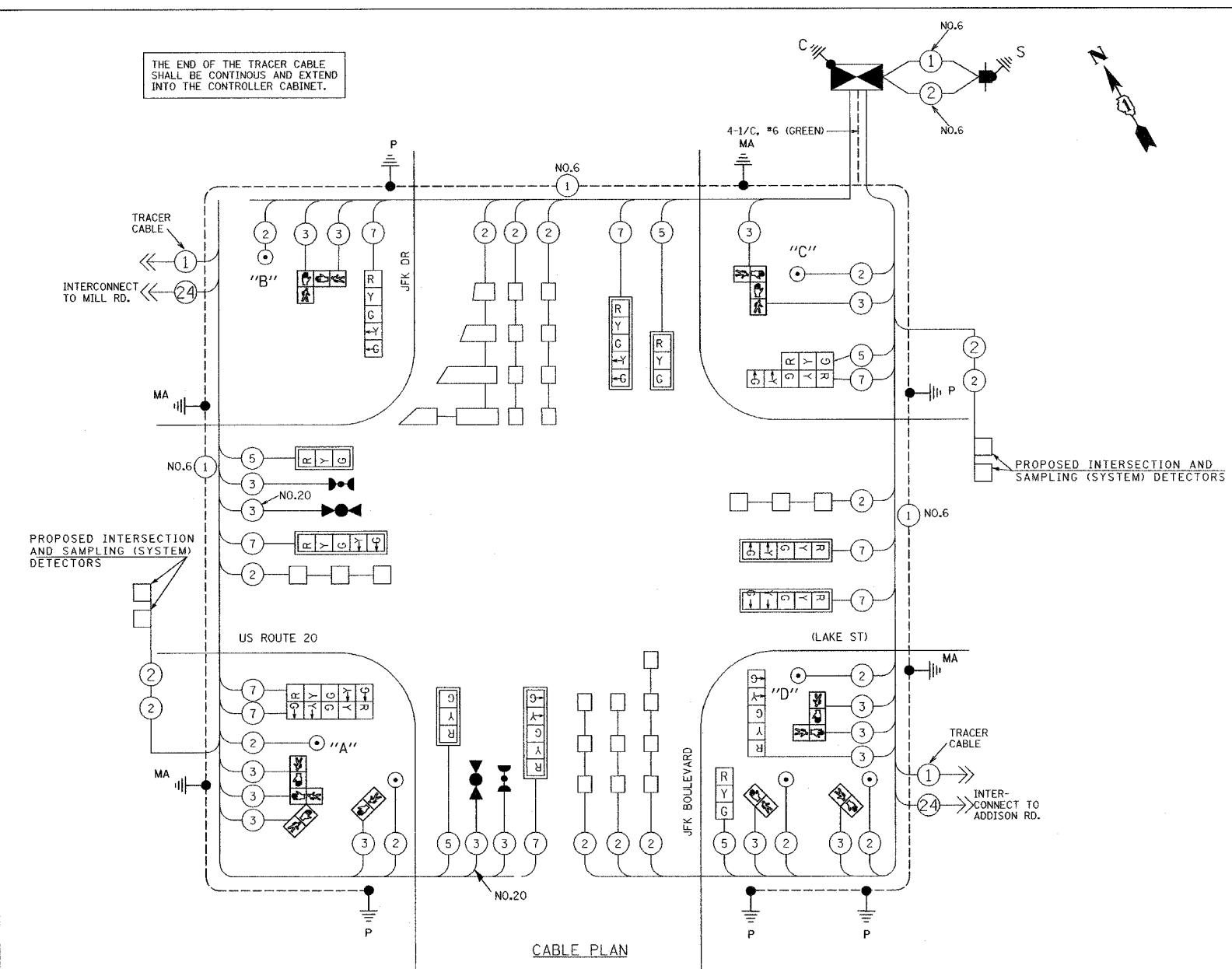
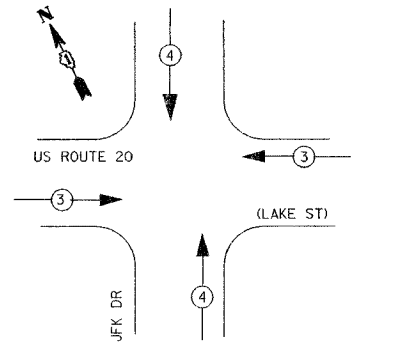


F.A. RTE.	SECTION	COUNTY	TOTAL SHEETS	SHEET NO.
3537	5Y-R-4	DUPAGE	397	253
STA.	TO STA.			
FED. ROAD DIST. NO.	ILLINOIS	FED. AID PROJECT		
CONTRACT NO. 62295				

THE END OF THE TRACER CABLE SHALL BE CONTINUOUS AND EXTEND INTO THE CONTROLLER CABINET.

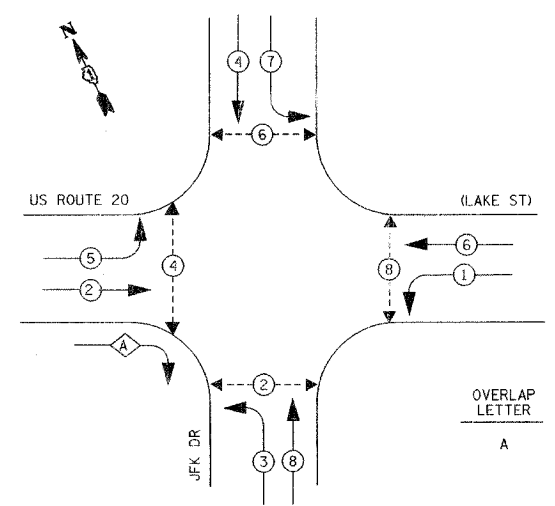


EMERGENCY VEHICLE PREEMPTION SEQUENCE



PROPOSED EMERGENCY VEHICLE PREEMPTORS	
EMERGENCY VEHICLE PREEMPTOR	3 4
MOVEMENT	← → ↑ ↓

CONTROLLER SEQUENCE



- LEGEND
- DUAL ENTRY PHASE
 - PROTECTED ONLY LEFT TURN PHASE
 - OVERLAP
 - PEDESTRIAN PHASE

OVERLAP LETTER	PERMISSIVE PHASE	PROTECTED PHASE
A	= 2	+ 3

PHASE DESIGNATION DIAGRAM

CABLE PLAN LEGEND

- | | | | |
|----------|----------|----------|----------|
| EXISTING | PROPOSED | EXISTING | PROPOSED |
| | | | |
| | | | |
| | | | |
| | | | |
| | | | |
| | | | |
| | | | |
| | | | |
| | | | |
| | | | |

NOTES:
 PUSHBUTTON "A" SHALL PLACE A CALL TO PHASES 2 AND 4
 PUSHBUTTON "B" SHALL PLACE A CALL TO PHASES 4 AND 6
 PUSHBUTTON "C" SHALL PLACE A CALL TO PHASES 6 AND 8
 PUSHBUTTON "D" SHALL PLACE A CALL TO PHASES 2 AND 8

I.D.O.T. TRAFFIC SIGNAL INSTALLATION ELECTRICAL SERVICE REQUIREMENTS					TOTAL WATTAGE
TYPE	NO. LAMPS	WATTAGE (INCAND.)	WATTAGE (LED)	% OPERATION	
SIGNAL (RED)	15	135	17	0.50	127.50
(YELLOW)	15	135	25	0.25	93.75
(GREEN)	15	135	15	0.25	56.25
ARROW	20	135	12	0.10	24.00
PED. SIGNAL	12	90	25	1.00	300.00
CONTROLLER	1	100	100	1.00	100.00
ILLUM. SIGN		84		0.05	
FLASHER				0.50	--
TOTAL =					701.50

ENERGY COSTS TO:
 ILLINOIS DEPARTMENT OF TRANSPORTATION
 201 WEST CENTER COURT
 SCHAMBURG, ILLINOIS 60196-1096
 ENERGY SUPPLY CONTACT: KATHY NYSTROM
 PHONE: (847) 816-5489
 COMPANY: COM. ED.

FOUNDATION (DEPTH)	FT. (m)	CABLE SLACK	FT. (m)	VERTICAL	FT. (m)
TYPE A - POST	4 (1.2)	HANDHOLE	6.5 (2.0)	ALL FOUNDATIONS	3.5 (1.0)
D - CONTROLLER	4 (1.2)	DOUBLE HANDHOLE	13 (4.0)	MAST ARM (L) POLE	20'H-L-2"=
E - M. ARM POLE		SIGNAL POST	2 (1.0)	(6m+L-0.6m)=	
	24" (600mm)	CONTROLLER CAB.	1 (0.5)	BRACKET MOUNTED	13 (4.0)
	30" (750mm)	FIBER OPTIC	13 (4.0)	PED. PUSHBUTTON	4 (1.2)
		ELECTRIC SERVICE	1 (0.5)	ELECTRIC SERVICE	13.5 (4.1)
		GROUND CABLE	1 (0.5)	SERVICE TO GROUND	13.5 (4.1)
				POST MOUNTED	6 (1.8)

THE TRAFFIC SIGNAL CONTROL EQUIPMENT FOR THE FUTURE PROJECT SHALL BE "EAGLE" TO MATCH THE EXISTING ADJACENT SYSTEM.

REVISIONS	
NAME	DATE

ILLINOIS DEPARTMENT OF TRANSPORTATION
 CABLE PLAN AND PHASE DESIGNATION DIAGRAM
 US ROUTE 20 (LAKE STREET) & JFK BLVD.
 DRAWN BY: MJH
 DESIGNED BY: MJH
 CHECKED BY: RN
 SCALE: NONE
 DATE: 03/01/05