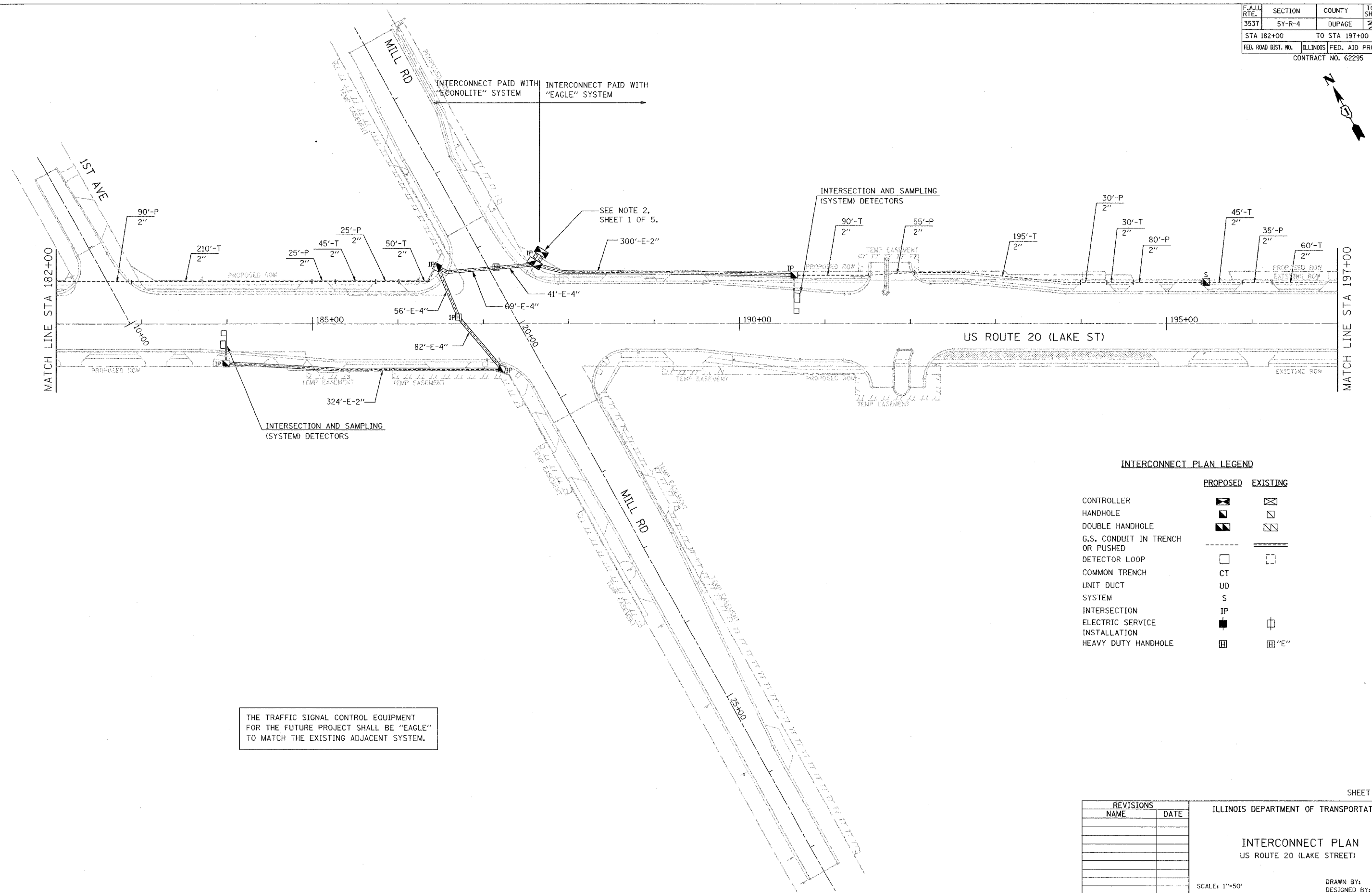
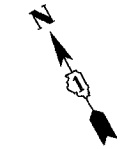


F.A. RTE.	SECTION	COUNTY	TOTAL SHEETS	SHEET NO.
3537	5Y-R-4	DUPAGE	392	259
STA 182+00		TO STA 197+00		
FED. ROAD DIST. NO.	ILLINOIS	FED. AID PROJECT		
CONTRACT NO. 62295				



THE TRAFFIC SIGNAL CONTROL EQUIPMENT FOR THE FUTURE PROJECT SHALL BE "EAGLE" TO MATCH THE EXISTING ADJACENT SYSTEM.

INTERCONNECT PLAN LEGEND

	PROPOSED	EXISTING
CONTROLLER	☒	☒
HANDHOLE	◻	◻
DOUBLE HANDHOLE	◼	◼
G.S. CONDUIT IN TRENCH OR PUSHED	---	==
DETECTOR LOOP	□	□
COMMON TRENCH	CT	
UNIT DUCT	UD	
SYSTEM	S	
INTERSECTION	IP	
ELECTRIC SERVICE INSTALLATION	■	◻
HEAVY DUTY HANDHOLE	◻	◻ 'E'

SHEET 4 OF 5

REVISIONS	
NAME	DATE

ILLINOIS DEPARTMENT OF TRANSPORTATION

INTERCONNECT PLAN
US ROUTE 20 (LAKE STREET)

SCALE: 1"=50'
DATE: 03/01/05

DRAWN BY: MJH
DESIGNED BY: MJH
CHECKED BY: RN

18_4417146_e_18200m1184m197+00.dwg