

GENERAL NOTES

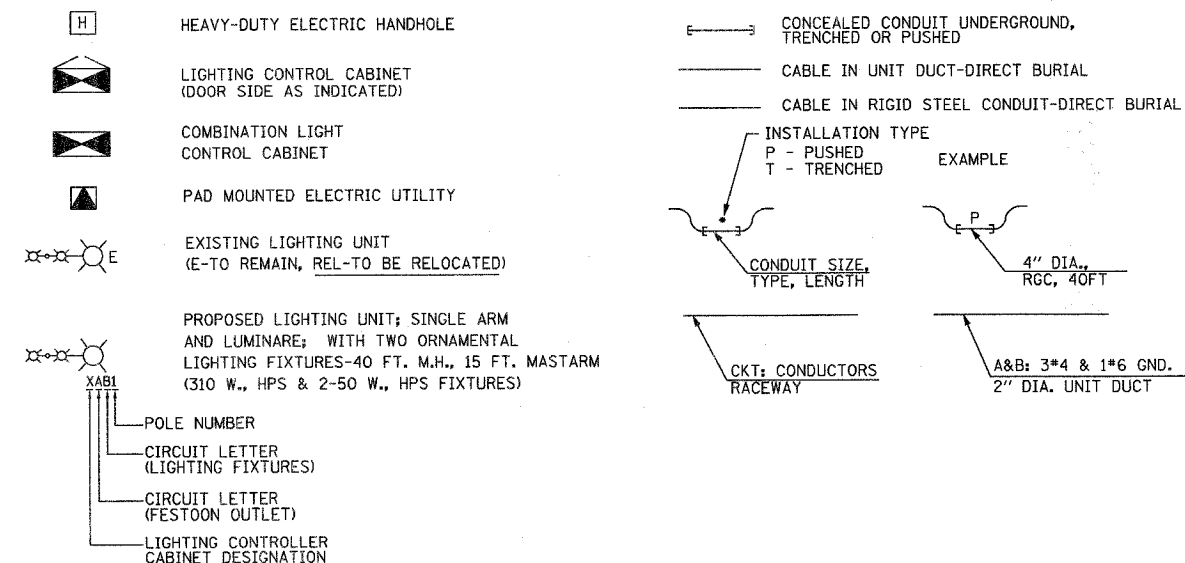
- IT SHALL BE THE CONTRACTOR'S RESPONSIBILITY TO MARK THE PROPOSED LOCATIONS OF ALL LIGHT POLE FOUNDATIONS, CENTER LINE OF TRENCH AND PUSHES AND THE LIGHTING CONTROLLER FOR EXAMINATION AND CONFIRMATION WITH THE ENGINEER AT THE PRECONSTRUCTION INSPECTION. THE EXACT LOCATIONS OF ALL ITEMS SHALL BE CONFIRMED WITH THE ENGINEER PRIOR TO STARTING WORK.
- THE CONTRACTOR SHALL MAKE SPECIAL NOTE OF THE REQUIREMENTS FOR GROUNDING. GROUNDING CONNECTIONS AT THE FOUNDATION SHALL BE EXOTHERMICALLY WELDED, AS SPECIFIED, AND SHALL BE INSPECTED AND APPROVED BY THE RESIDENT ENGINEER PRIOR TO POURING CONCRETE OR BACKFILLING, AS APPLICABLE.
- THE CONTRACTOR SHALL MAKE SPECIAL NOTE OF THE SPECIFIED REQUIREMENTS FOR BURIED WARNING TAPE, SPECIFIED AS PART OF "TRENCH AND BACKFILL FOR ROADWAY LIGHTING". THE INSTALLATION OF THE TAPE SHALL BE INSPECTED BY THE ENGINEER PRIOR TO BACKFILLING OR DURING PLOWING OPERATIONS, AS APPLICABLE.
- THE CONTRACTOR SHALL BE RESPONSIBLE FOR THE ESTABLISHMENT OF FINISHED GRADE. THE ENGINEER MAY ASSIST THE CONTRACTOR, AS APPLICABLE, BUT THE RESPONSIBILITY FOR COORDINATING THE FINISHED GRADE ELEVATION WITH THE TOP OF THE FOUNDATION HEIGHTS AND THE LIKE SHALL REMAIN WITH THE CONTRACTOR.
- NO LIGHT POLES SHALL BE ERECTED UNTIL THE RESPECTIVE FOUNDATIONS HAVE CURED, AS APPROVED BY THE ENGINEER.
- THE CONTRACTOR SHALL NOTE THE REQUIREMENTS FOR THE ELECTRICAL SERVICE FOR THE PROPOSED ROADWAY LIGHTING. IT IS THE CONTRACTOR'S RESPONSIBILITY FOR TIMELY NOTIFICATION AND COORDINATION WITH THE ELECTRIC UTILITY COMPANY.
- THE LIGHTING CONTROLLER SHALL BE CONSTRUCTED TO U.L. STANDARD 508 AND BEAR THE LABEL "ENCLOSED INDUSTRIAL CONTROL PANEL".
- TO MAINTAIN STRUCTURAL INTEGRITY OF THE ALUMINUM POLES WITH MAST ARMS, THEY SHALL NOT BE ERECTED AND LEFT TO STAND WITHOUT LUMINAIRES. NOTE THAT POLES SHALL NOT BE PAID UNTIL THE LUMINAIRES ARE INSTALLED.
- NO EQUIPMENT OR MATERIAL SHALL BE DELIVERED TO THE JOB SITE PRIOR TO THE APPROVAL AND INSPECTION BY THE ENGINEER. ANY EQUIPMENT OR MATERIAL DELIVERED TO THE JOB SITE PRIOR TO APPROVAL AND INSPECTION SHALL BE REMOVED FROM THE JOB SITE AT THE CONTRACTOR'S EXPENSE.
- CONDUIT PUSHED AND IN TRENCH SHALL EXTEND TWO (2) FEET BEYOND THE SHOULDER, CURB OR DRIVEWAY, AS APPLICABLE.
- THE CONTRACTOR SHALL PROVIDE A 5/8" X 10' COPPER CLAD GROUND ROD AT EACH LIGHT POLE, AS SHOWN IN THE FOUNDATION DETAIL DRAWING.
- THE UNIT DUCT AND CONDUIT SHALL BE INSTALLED MIN. 30 INCHES BELOW FINISHED GRADE (UNLESS DIRECTED OTHERWISE) COMPLETE WITH WARNING TAPE. CONTRACTOR SHALL HAND DIG TEST HOLES FOR EVERY 1000 FT. OF TRENCHING/PLOWING FOR ENGINEERS APPROVAL OF THE INSTALLATION.
- MATERIALS AND INSTALLATION METHODS SHALL COMPLY WITH CODES AND ORDINANCES OF FEDERAL, STATE AND LOCAL GOVERNING BODIES HAVING JURISDICTION. NATIONAL ELECTRICAL CODE (LATEST REVISION) SHALL BE CONSIDERED AS A MINIMUM REQUIREMENT.
- IT IS CONTRACTOR'S RESPONSIBILITY TO COORDINATE THE LOCATION OF EXISTING UNDERGROUND UTILITIES PRIOR TO THE START OF CONSTRUCTION. CONTACT J.U.L.I.E. PRIOR TO THE START OF ANY EXCAVATION WORK.
- BEFORE INSTALLING STANDARDS NEAR OVERHEAD FACILITIES CALL C.E. CO. FOR APPROVAL OF LOCATION.
- FOR LOCATION OF EXISTING UNDERGROUND MUNICIPAL UTILITIES CALL VILLAGE OF ADDISON.

- MATERIAL QUANTITIES ARE APPROXIMATIONS ONLY. IT IS CONTRACTOR'S RESPONSIBILITY TO FIELD VERIFY ALL QUANTITIES PRIOR TO ORDERING MATERIAL.
- THE CONTRACTOR SHALL COORDINATE THE CONSTRUCTION AND STAGING WITH OTHER WORK BEING DONE IN THE SAME GENERAL AREA BY COMED. CONTRACTOR SHALL SET UP COORDINATION MEETINGS IF REQUIRED.
- A STAGING SCHEDULE FOR MATERIAL INSTALLATION, REMOVAL AND APPROXIMATE DATE OF PROPOSED ENERGIZING OF PERMANENT LIGHTING SHALL BE SUBMITTED PRIOR TO THE COMMENCEMENT OF WORK TO ASSURE COORDINATION WITH EXPEDITED WORK SCHEDULE.
- COMMONWEALTH EDISON COMPANY SHALL BE CONTACTED AS SOON AS POSSIBLE AND NOTIFIED OF PENDING SERVICE CONNECTIONS AND INSTALLATIONS TO ENSURE CONTINUITY OF NIGHT TIME HOURS OF LIGHTING OPERATION.
- ALL PROPOSED LIGHTING CONTROL CABINETS SHALL BE INSTALLED WITHIN THE RIGHT-OF-WAY, THE EXACT LOCATION TO BE CONFIRMED IN THE FIELD BY THE RESIDENT ENGINEER.
- ALL PROPOSED LIGHT POLE FOUNDATIONS, LIGHT FIXTURES (INCLUDING ORNAMENTAL FIXTURES), UNIT DUCT, AND CONDUIT SHALL BE INSTALLED WITHIN THE RIGHT-OF-WAY. THE EXACT LOCATION IS TO BE CONFIRMED IN THE FIELD BY THE RESIDENT ENGINEER.
- EACH WIRE SHALL BE IDENTIFIED AT EACH POLE BY APPROPRIATE CONTROLLER AND CIRCUIT NUMBER.
- CONTRACTOR SHALL SUBMIT "RECORD DRAWINGS" A MINIMUM OF 7 DAYS PRIOR TO THE FINAL INSPECTION. "RECORD DRAWINGS" SHALL BE UPDATED REGULARLY DURING CONSTRUCTION AND INDICATE ALL LIGHTING MATERIAL INSTALLATION WITH ANY CHANGES IN RED.
- ALL AREAS DISTURBED UNDER THIS CONTRACT SHALL BE RESTORED TO ORIGINAL CONDITION OR BETTER, TO THE SATISFACTION OF ENGINEER.
- CONTRACTOR SHALL NOT PROCEED WITH CUTTING OF TREES OR CLEARING OF RIGHT-OF-WAY WITHOUT WRITTEN NOTIFICATION OF ENGINEER.
- CONTRACTOR TO VERIFY FOUNDATION BOLT PATTERN PRIOR TO CONSTRUCTING FOUNDATIONS.
- ANY DAMAGE TO EXISTING UTILITIES DURING CONSTRUCTION SHALL BE REPAIRED IMMEDIATELY AT NO EXTRA COST TO THE VILLAGE.
- CONTRACTOR SHALL PUSH GALVANIZED RIGID STEEL CONDUIT UNDER DRIVEWAYS, ROADWAYS AND SIDEWALKS. CONDUIT UNDER SIDEWALKS ARE NOT SHOWN FOR SAKE OF CLARITY, BUT SHALL BE INCLUDED. THE SIZE OF CONDUIT SHALL BE 3" UNLESS NOTED OTHERWISE.
- CONTRACTOR'S STAGING AREA SHALL BE AS DIRECTED BY THE OWNER IN THE PRE BID MEETING.
- LIGHTING EQUIPMENT SHALL BE PAINTED BLACK. THE FINISH EMPLOYED SHALL BE AN ENAMEL OR POLYESTER HEAT-CURED CORROSION-RESISTANT COATING APPLIED BY THE MANUFACTURER AT THE FACTORY. THE CONTRACTORS SHALL ENSURE THAT THE FINISHES FROM MULTIPLE VENDORS HAVE ARE UNIFORM IN APPEARANCE. DAMAGE TO FINISHES SHALL BE REPAIRED BY THE CONTRACTOR WITH MANUFACTURER-APPROVED TOUCH-UP PAINT.
- QUANTITY OF PUSHED CONDUIT AND CONDUIT IN TRENCH ARE APPROXIMATE ONLY. CONTRACTOR SHALL FIELD VERIFY THE QUANTITIES PRIOR TO ORDERING THE MATERIAL AND INSTALL CONDUITS IN FULL COMPLIANCE WITH THE DETAILS AND SPECIFICATIONS SET REQUIREMENTS.
- A PHOTO-CELL SHALL BE MOUNTED ON THE CLOSEST POLE TO EACH LIGHTING CONTROLLER. FURNISH WEATHER TIGHT ADAPTER FOR MOUNTING PHOTO-CELL. PHOTO-CELL CONTROL CABLES SHALL RUN INSIDE THE SAME RACEWAY AS THE LIGHTING CIRCUIT.
- THE CONTROLLER AND CIRCUIT DESIGNATIONS AS SHOWN ON THE DRAWINGS ARE FOR REFERENCE ONLY. EXACT DESIGNATIONS FOR DECALS SHALL BE AS DIRECTED BY THE OWNER.
- BRICK PAVERS SHALL BE REMOVED AND REPLACED WHEN NECESSARY. INSTALL RIGID GALVANIZED STEEL CONDUIT FOR RACEWAY BETWEEN POLES IN BRICK PAVEMENT AREAS.
- ALL EXISTING BRICK PAVERS TO BE REMOVED AND REPLACED UNDER THIS CONTRACT SHALL BE PROTECTED FROM DAMAGE. ANY BRICK DAMAGED AS A RESULT OF CONTRACTOR'S OPERATION SHALL BE REPLACED WITH NEW ONE.
- WHEN AN EXISTING LIGHT POLE IS TO BE REMOVED, CONTRACTOR SHALL DISCONNECT THE POWER SOURCE FROM PREVIOUS LIGHT POLE OR HANDHOLE (AS APPLICABLE). CONTRACTOR SHALL SALVAGE AND RETURN THE REMOVED LIGHT POLE TO THE VILLAGE.
- THE POLE DESIGNATION AS SHOWN ON THE DRAWINGS ARE FOR REFERENCE ONLY. EXACT DESIGNATION OF ALL NEW POLES AND RELOCATED POLES SHALL BE AS DIRECTED BY THE OWNER.
- THE MAST ARM LENGTH OF THE DECORATIVE POLES IS 15'. THE MAST ARM LENGTH OF THE COMBINATION SIGNAL POLES IS 12'.

BILL OF MATERIALS

CODE NO.	ITEM	UNIT	QUANTITY
80700110	GROUND ROD, 3/4" DIA. X 10 FT.	EACH	110
80300100	LOCATING UNDERGROUND CABLE	FOOT	200
80400100	ELECTRIC SERVICE INSTALLATION	EACH	4
80400200	ELECTRIC UTILITY SERVICE CONNECTION	L SUM	1
81000500	CONDUIT IN TRENCH, 1 1/2" DIA., GALVANIZED STEEL	FOOT	1510
81018700	CONDUIT PUSHED, 3" DIA., GALVANIZED STEEL	FOOT	1842
81019000	CONDUIT PUSHED, 5" DIA., GALVANIZED STEEL	FOOT	257
81400500	CONCRETE HEAVY-DUTY HANDHOLE	EACH	28
81500200	TRENCH AND BACKFILL FOR ELECTRICAL WORK	FOOT	21013
X0323476	UNIT DUCT, WITH 4-1/C #4, AND 1/C #6 GND., 600V (XLP-TYPE USE), 2" DIA. POLYETHYLENE	FOOT	19503
81700120	ELECTRIC CABLE IN CONDUIT, 600V (EPR-TYPE RHW) 1/C NO. 6	FOOT	1080
81700130	ELECTRIC CABLE IN CONDUIT, 600V (EPR-TYPE RHW) 1/C NO. 2	FOOT	4830
81700315	ELECTRIC CABLE IN CONDUIT, 600V (EPR-TYPE RHW) 3 - 1/C NO. 10	FOOT	5245
82102310	LUMINAIRE, SODIUM VAPOR, HORIZONTAL MOUNT, 310 WATT	EACH	70
82102400	LUMINAIRE, SODIUM VAPOR, HORIZONTAL MOUNT, 400 WATT	EACH	19
X0323478	LUMINAIRE, SODIUM VAPOR, HORIZONTAL MOUNT, 50 WATT, ORNAMENTAL WITH ARM ASSEMBLY	EACH	140
X0324387	LUMINAIRE SAFETY CABLE ASSEMBLY	EACH	21
82500505	LIGHTING CONTROLLER (SPECIAL)	EACH	3
X8250090	COMBINATION POLE LIGHTING CONTROLLER,	EACH	4
	ELECTRIC SERVICE DISCONNECT	EACH	4
	LIGHT POLE, ORNAMENTAL, ALUMINUM, 40 FT. M.H., 12 FT. MAST ARM	EACH	70
X0323479	PEDESTAL BASE	EACH	70
XX000596	FESTOON OUTLET	EACH	70
83600300	LIGHT POLE FOUNDATION, 30" DIAMETER	FOOT	1032
83600315	LIGHT POLE FOUNDATION, 30" DIAMETER, OFFSET	FOOT	24
84200500	REMOVAL OF EXISTING LIGHTING UNITS, SALVAGE	EACH	7
84200700	LIGHTING FOUNDATION REMOVAL	EACH	18
84400105	RELOCATE EXISTING LIGHTING UNIT	EACH	18
X8440102	RELOCATE EXISTING LUMINAIRE	EACH	2
X0323574	MAINTENANCE OF LIGHTING SYSTEM	CAL MO	10

LEGEND



REVISIONS	
NAME	DATE

ILLINOIS DEPARTMENT OF TRANSPORTATION

LIGHTING GENERAL NOTES,
QUANTITIES AND LEGEND
US ROUTE 20 (LAKE STREET)

SCALE: DRAWN BY: JRH
DATE: 03/01/05 CHECKED BY: DEM