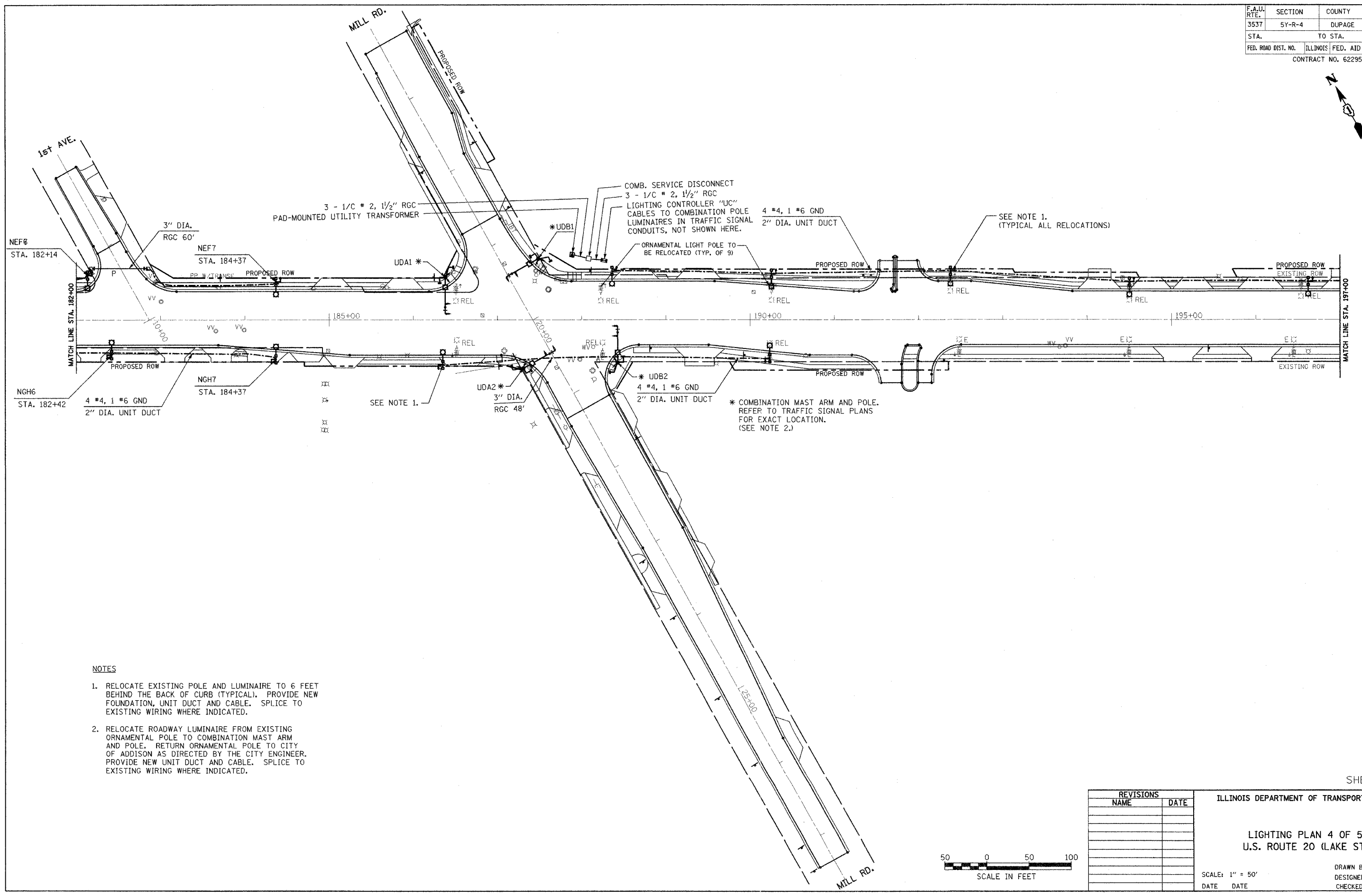
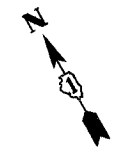
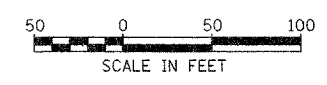


F.A.U. RTE.	SECTION	COUNTY	TOTAL SHEETS	SHEET NO.
3537	5Y-R-4	DUPAGE	390	207
STA.		TO STA.		
FED. ROAD DIST. NO.	ILLINOIS	FED. AID PROJECT		
CONTRACT NO. 62295				



- NOTES**
- RELOCATE EXISTING POLE AND LUMINAIRE TO 6 FEET BEHIND THE BACK OF CURB (TYPICAL). PROVIDE NEW FOUNDATION, UNIT DUCT AND CABLE. SPLICE TO EXISTING WIRING WHERE INDICATED.
 - RELOCATE ROADWAY LUMINAIRE FROM EXISTING ORNAMENTAL POLE TO COMBINATION MAST ARM AND POLE. RETURN ORNAMENTAL POLE TO CITY OF ADDISON AS DIRECTED BY THE CITY ENGINEER. PROVIDE NEW UNIT DUCT AND CABLE. SPLICE TO EXISTING WIRING WHERE INDICATED.

SHEET L-4



REVISIONS	
NAME	DATE

ILLINOIS DEPARTMENT OF TRANSPORTATION

LIGHTING PLAN 4 OF 5
U.S. ROUTE 20 (LAKE ST)

SCALE: 1" = 50'

DATE DATE

DRAWN BY CMW
 DESIGNED BY CMW
 CHECKED BY DEM

3/15/2016 9:34:21 AM