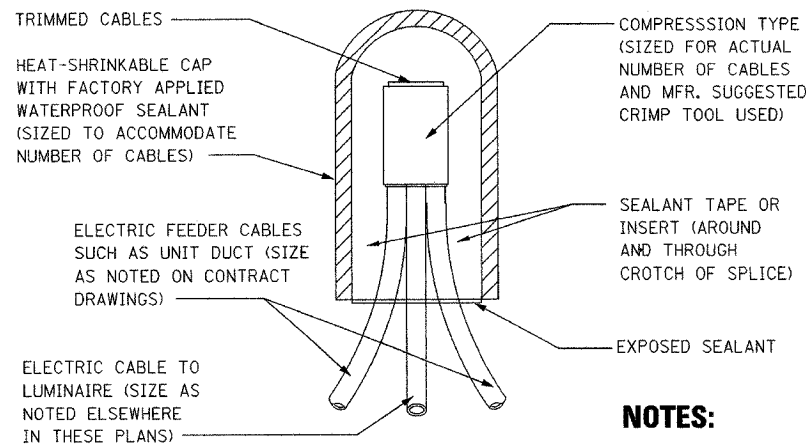


MAJOR STREETS WITH MAST ARMS

TYPE OF SOIL	DESIGN DEPTH		REINFORCEMENT IN FOUNDATION			
	SINGLE ARM D	TWIN ARM D	SINGLE ARM VERT. BARS	SPIRAL	TWIN ARM VERT. BARS	SPIRAL
SOFT CLAY	13'-0"	15'-0"	4-#6X12'-6"	#3X122'	4-#6X14'-6"	#3X141'
MEDIUM CLAY	9'-6"	10'-9"	4-#6X9'-0"	#3X90'	4-#6X10'-3"	#3X100'
STIFF CLAY	8'-0"	8'-0"	4-#6X7'-6"	#3X76'	4-#6X7'-6"	#3X76'
LOOSE SAND	9'-0"	10'-0"	4-#6X8'-6"	#3X85'	4-#6X9'-6"	#3X94'
MEDIUM SAND	8'-3"	9'-0"	4-#6X7'-9"	#3X78'	4-#6X8'-6"	#3X85'
DENSE SAND	8'-0"	9'-0"	4-#6X7'-6"	#3X76'	4-#6X8'-6"	#3X85'

NOTES: 1. CONTRACTOR AT HIS OPTION MAY SUBSTITUTE #3 HOOPS AT 12" ON CENTERS FOR SPIRAL CAGE. 2. CONTRACTOR SHALL USE THE VALUES FOR TWIN ARM INSTALLATION FOR THIS PROJECT

LIGHT POLE FOUNDATION DESIGN TABLE



NOTES: 1. THE NUMBER OF CABLES IN SPLICE MAY VARY

**SPLICING ELECTRIC CABLES
BASIC MATERIALS & METHODS**

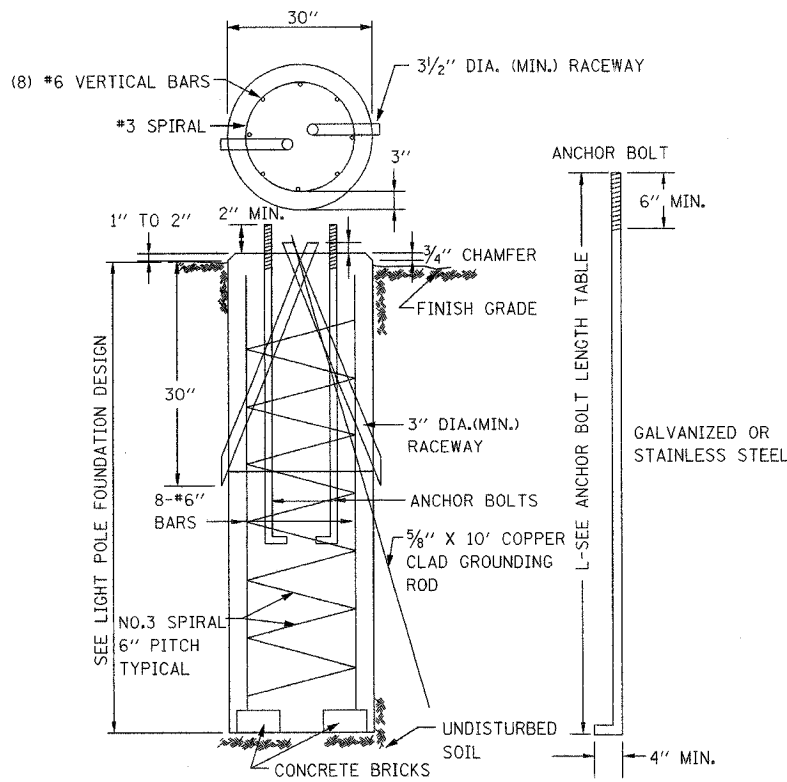
NOTES:

1. THE ENGINEER SHALL DETERMINE THE CLASS OF SOIL DURING THE EXCAVATION AND SELECT THE DEPTH OF THE FOUNDATION FROM THE DESIGN TABLES.
2. EXCAVATION OF THE FOUNDATION SHALL BE MADE WITH A 30" DIAMETER AUGER.
3. THE CONTRACTOR SHALL USE A #3 SPIRAL CAGE WITH A 6" PITCH, OR AT THIS OPTION, MAY SUBSTITUTE WITH A #3 HOOPS AT 12" ON CENTERS.
4. EACH ANCHOR BOLT SHALL BE FURNISHED WITH (2) FLAT WASHERS AND (2) HEX NUTS. THEY SHALL BE EITHER GALVANIZED OR STAINLESS STEEL TO MATCH THE ANCHOR BOLTS.
5. RACEWAYS SHALL BE INSTALLED PARALLEL TO THE EDGE OF PAVEMENT.
6. ANCHOR BOLTS, RACEWAYS, AND REINFORCING STEEL SHALL BE SECURED IN PLACE BEFORE THE CONCRETE IS PLACED IN THE FORM.
7. CONCRETE SHALL BE A 6 BAG MIX, WITH A MINIMUM STRENGTH OF 3000 PSI.
8. THE CONCRETE SHALL CURE FOR A MINIMUM OF 10 DAYS BEFORE ERECTING THE LIGHT POLE.
9. THE CABLE TRENCH SHALL BE BACKFILLED AND FIRMLY COMPACTED BEFORE ERECTING THE LIGHT POLE.
10. ANCHOR BOLTS SHALL PROJECT A MINIMUM OF 2" AND A MAXIMUM OF 4" ABOVE THE TOP OF THE FOUNDATION.
11. RACEWAYS SHALL PROJECT 1" ABOVE THE TOP OF THE FOUNDATION.
12. ALL GROUND ROD CONNECTIONS SHALL BE MADE ABOVE GRADE, INSIDE THE POLE BASE, WITH EXOTHERMIC OR INERT GAS WELDS.

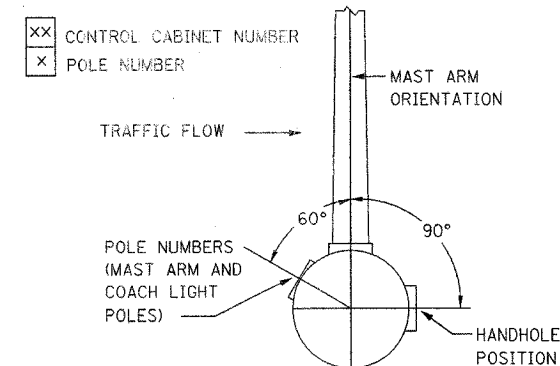
ANCHOR BOLT LENGTHS AND SIZES

LENGTH	LOCATION	SIZE
60"	ORNAMENTAL LIGHT POLES	4'-1"

THE ANCHOR BOLT PATTERN SHALL MATCH THE PATTERN ON THE LIGHT POLE BASE.



LIGHT POLE FOUNDATION



POSITION OF HANDHOLE AND POLE NUMBERS

NOTES:

1. LIGHT POLE NUMBERS SHALL BE 4" TALL, BLACK ABOVE THE FINISHED GRADE.
2. HAND HOLE AND POLE NUMBER LOCATIONS SHALL BE SIMILAR FOR MAST ARM AND COACH LIGHT POLES.
3. EXACT CONTROL CABINET AND POLE DESIGNATIONS SHALL BE AS DIRECTED BY THE OWNER.

F.A.U. RTE.	SECTION	COUNTY	TOTAL SHEETS	SHEET NO.
3537	5Y-R-4	DUPAGE	37	28

FED. ROAD DIST. NO. ILLINOIS PROJECT. CONTRACT NO. 62295



REVISIONS		ILLINOIS DEPARTMENT OF TRANSPORTATION VILLAGE OF ADDISON
NAME	DATE	
		DETAILS SHEET 1 LIGHTING UNIT DETAILS U.S. ROUTE 20 (LAKE STREET)
		SCALE NONE / AS NOTED
		DATE 03-01-05
		DRAWN BY JRH
		CHECKED BY DEM