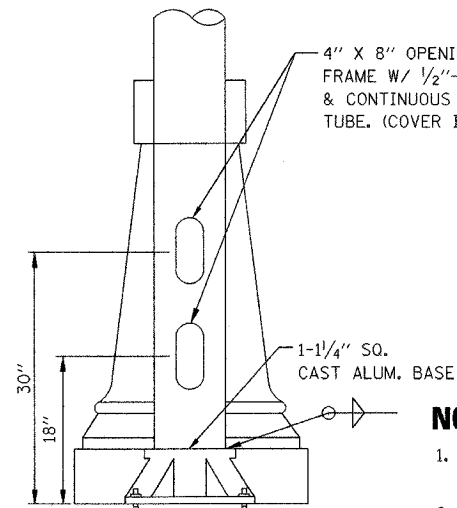


LIGHT POLE DETAIL

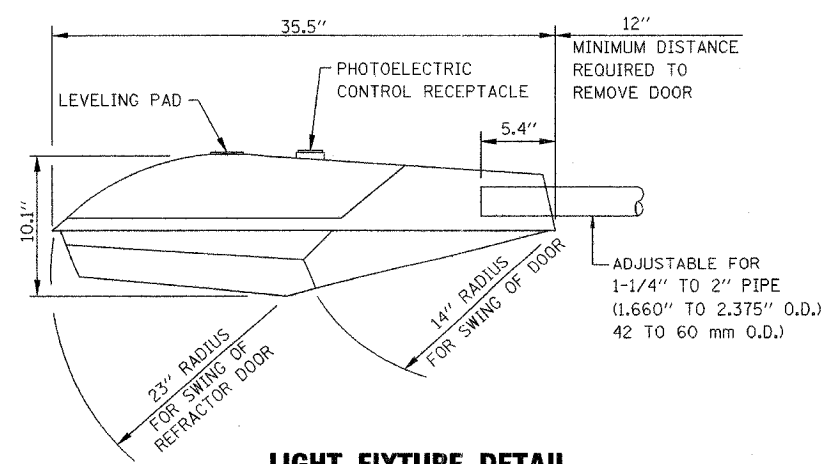
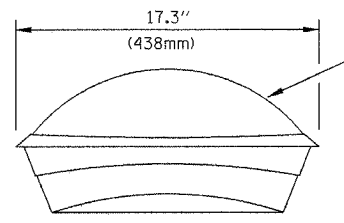
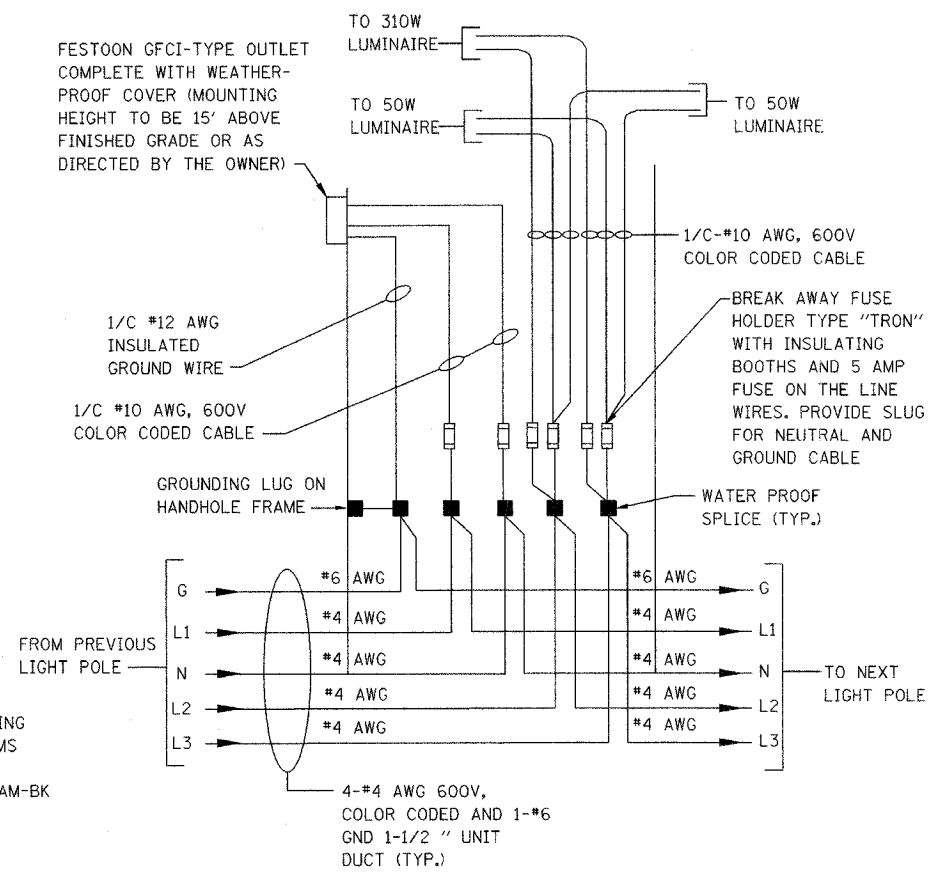


POLE BASE DETAIL

(4) 1" X 40" LG. GALV'D ANCHOR BOLTS
W/ (2) HEX NUTS & (2) FLAT WASHERS
EACH ON A 15" BOLT CIRCLE (10 5/8" CTRS.)
(10 5/8" CTRS.) (2) 16 GA. SHIMS PROVIDED PER POLE

NOTES:

- POLE & DAVIT HEAT TREATED TO T6 TEMPER AFTER WELDING.
- DESIGNED IN ACCORDANCE WITH 1985 AASHTO FOR 80 M.P.H. WIND ZONE.
- FINISH PAINT: MANUFACTURER'S GLOSS BLACK HEAT-CURED ENAMEL OR POLYESTER RESIN TO MATCH THE EXISTING LIGHTING UNITS.



LIGHT FIXTURE DETAIL

REVISIONS	
NAME	DATE

ILLINOIS DEPARTMENT OF TRANSPORTATION
VILLAGE OF ADDISON

DETAILS SHEET 2
LIGHTING UNIT DETAILS
U.S. ROUTE 20 (LAKE STREET)

SCALE NONE / AS NOTED
DATE 03-01-05

DRAWN BY JRH
CHECKED BY DEM