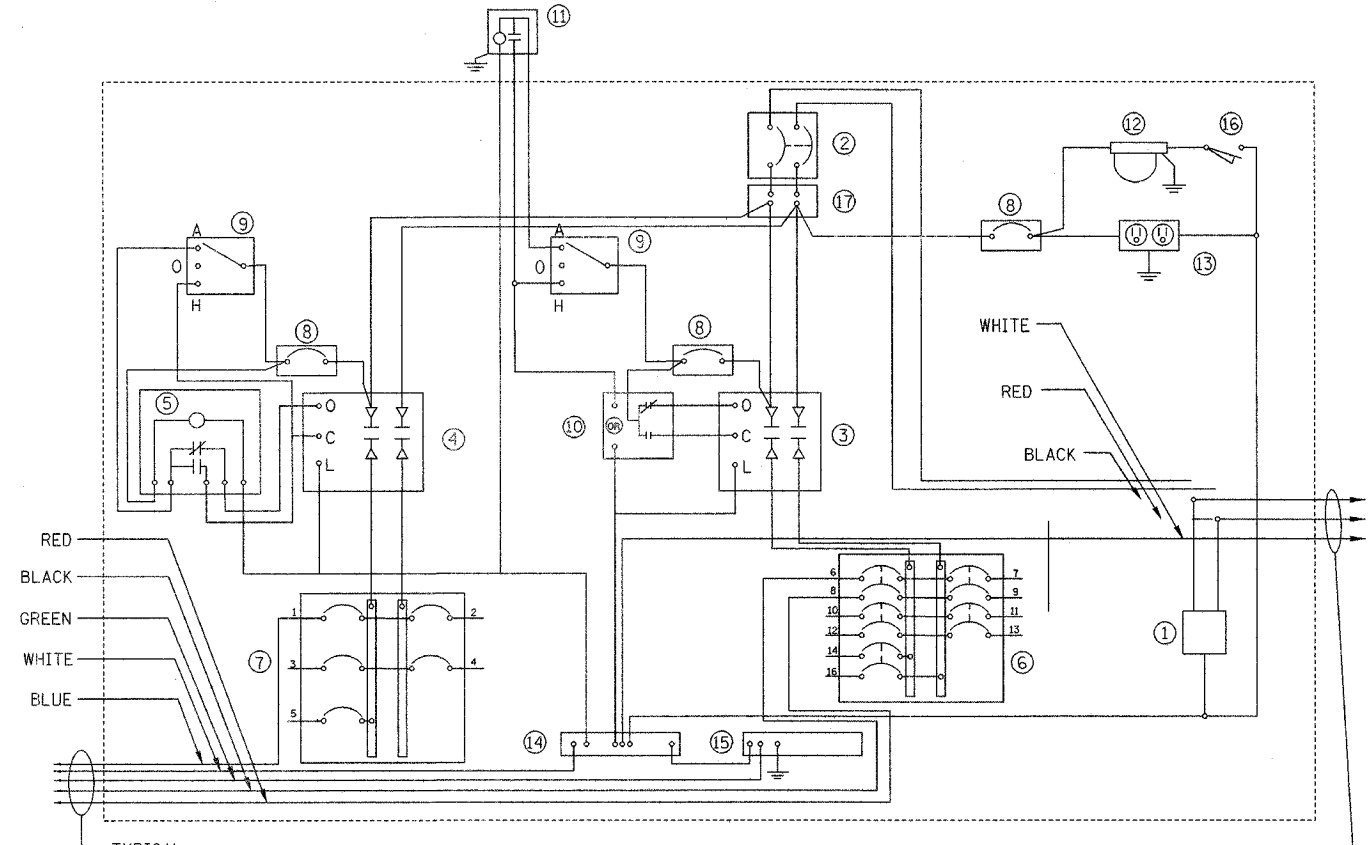


F.A.U. RTE.	SECTION	COUNTY	TOTAL SHEETS	SHEET NO.
3537	5Y-R-4	DUPAGE	392	286
FED. ROAD DIST. NO.	ILLINOIS PROJECT			

CONTRACT NO. 62295

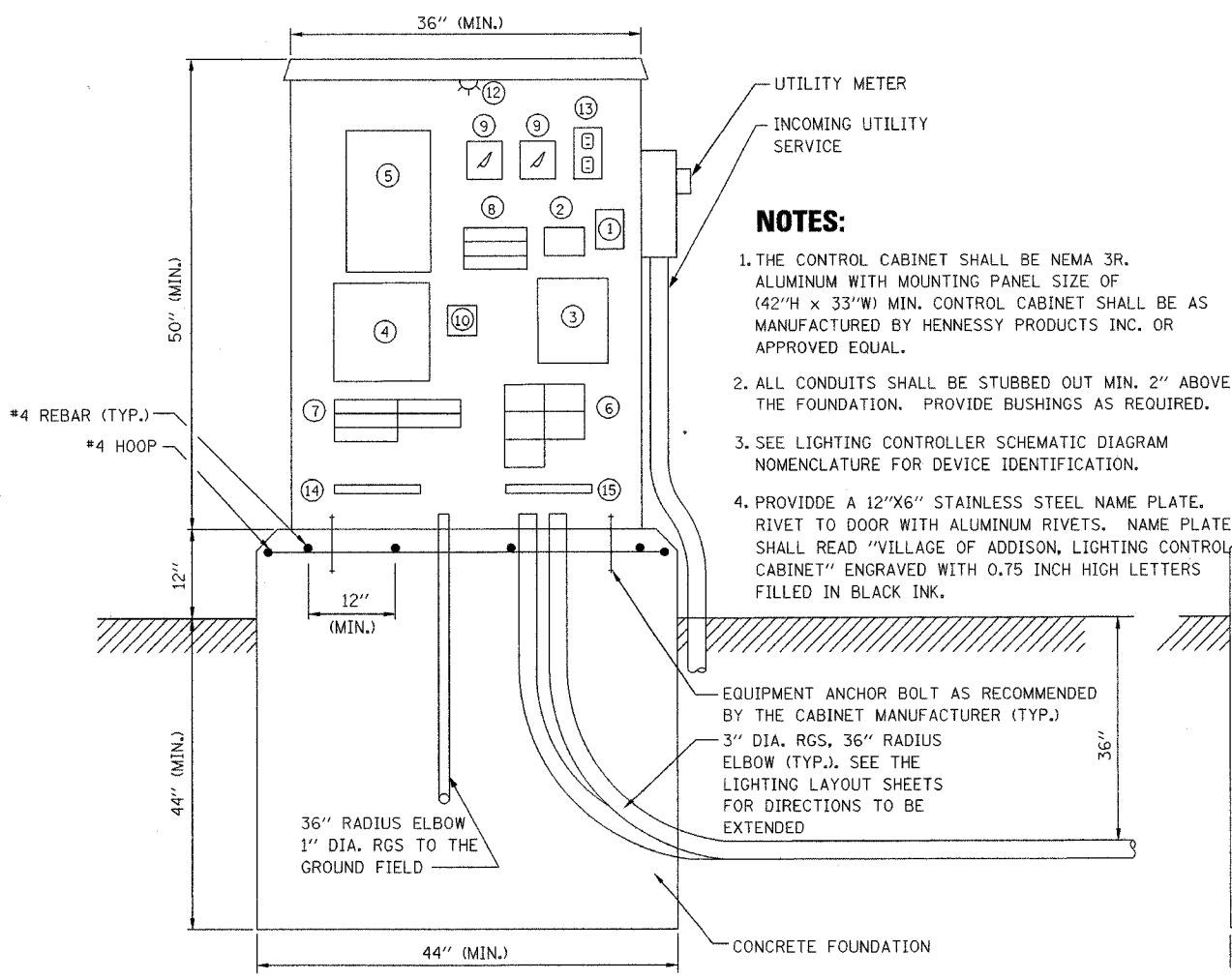
NOMENCLATURE

- ① 10000 AMP SURGE ARRESTOR (ELECTRONIC GUARD, EG 240 RC BY INTERMATIC).
- ② 100AMP, 2 POLE MAIN CIRCUIT BREAKER, 240V, 22KAIC (TYPE "TEB" BY GENERAL ELECTRIC OR TYPE "FAL" BY SQUARE D).
- ③ 100AMP, 2 POLE, SINGLE THROW, ELECTRICALLY OPERATED, MECHANICALLY HELD CONTACTOR (GENERAL ELECTRIC OR SQUARE D).
- ④ 100AMP, 2 POLE, SINGLE THROW, ELECTRICALLY OPERATED, MECHANICALLY HELD CONTACTOR (GENERAL ELECTRIC OR SQUARE D).
- ⑤ ASTRONOMIC TIME SWITCH WITH RESERVE POWER OPTION AND 20AMP CONTACTOR RATING AND MECHANICALLY HELD CONTACTOR CONTROL BY "TORK" OR APPROVED EQUAL.
- ⑥ FIVE 20AMP, 2 POLE CIRCUIT BREAKERS, 240V (TYPE "TEB" BY GENERAL ELECTRIC OR TYPE "FAL" BY SQUARE D).
- ⑦ FIVE 20AMP, 1 POLE CIRCUIT BREAKERS, 120V (TYPE "TEB" BY GENERAL ELECTRIC OR TYPE "FAL" BY SQUARE D).
- ⑧ 15AMP, 1 POLE CIRCUIT BREAKER, 120V (TYPE "TEB" BY GENERAL ELECTRIC OR EQUAL).
- ⑨ 20AMP, SPDT, H-O-A SWITCH, 120V MOUNTED ON 4" X 4" BOX.
- ⑩ AUXILLIARY CONTROL RELAY WITH CONTACTS RATED FOR CONTACTOR INRUSH CURRENT.
- ⑪ PHOTO-CELL WITH 2 MINUTE TIME DELAY, 120V, MOUNTED ON LUMINAIRE CLOSEST TO THE CONTROLLER CABINET, BY "TORK" OR APPROVED EQUAL.
- ⑫ WATER PROOF INCANDESENT LIGHTING FIXTURE WITH 120V, 60 WATT BULB.
- ⑬ 15AMP, 120V, DUPLEX GFCI OUTLET.
- ⑭ 1" X 12" NEUTRAL STRIP LABELED "NEUTRAL" AND JOINED TO THE GROUND STRIP WITH A BONDING JUMPER.
- ⑮ 1" X 12" GROUND STRIP LABELED "GROUND", AND PAINTED GREEN.
- ⑯ LIMIT SWITCH FOR CABINET LIGHT FIXTURE.
- ⑰ POWER TERMINAL BLOCK, 100 A, COPPER AND PHENOLIC CONSTRUCTION



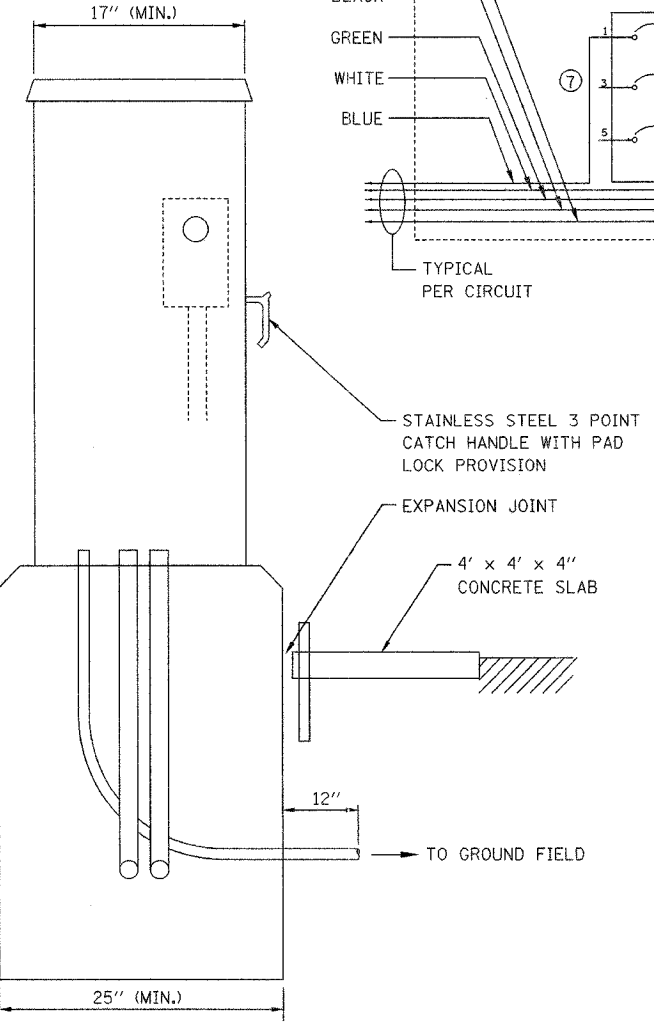
LIGHTING CONTROLLER SCHEMATIC DIAGRAM

3-#2 TO 120/240V SINGLE PHASE 3 WIRE SYSTEM UTILITY METER



FRONT ELEVATION

LIGHTING CONTROL CABINET AND FOUNDATION DETAIL



LEFT SIDE ELEVATION

NOTES:

1. THE CONTROL CABINET SHALL BE NEMA 3R, ALUMINUM WITH MOUNTING PANEL SIZE OF (42"H X 33"W) MIN. CONTROL CABINET SHALL BE AS MANUFACTURED BY HENNESSY PRODUCTS INC. OR APPROVED EQUAL.
2. ALL CONDUITS SHALL BE STUBBED OUT MIN. 2" ABOVE THE FOUNDATION. PROVIDE BUSHINGS AS REQUIRED.
3. SEE LIGHTING CONTROLLER SCHEMATIC DIAGRAM NOMENCLATURE FOR DEVICE IDENTIFICATION.
4. PROVIDE A 12"X6" STAINLESS STEEL NAME PLATE. RIVET TO DOOR WITH ALUMINUM RIVETS. NAME PLATE SHALL READ "VILLAGE OF ADDISON, LIGHTING CONTROL CABINET" ENGRAVED WITH 0.75 INCH HIGH LETTERS FILLED IN BLACK INK.

EQUIPMENT ANCHOR BOLT AS RECOMMENDED BY THE CABINET MANUFACTURER (TYP.)
 3" DIA. RGS, 36" RADIUS ELBOW (TYP.). SEE THE LIGHTING LAYOUT SHEETS FOR DIRECTIONS TO BE EXTENDED

REVISIONS	
NAME	DATE

ILLINOIS DEPARTMENT OF TRANSPORTATION
 VILLAGE OF ADDISON

DETAILS SHEET 3
 VILLAGE LIGHTING CONTROLLER DETAILS
 U.S. ROUTE 20 (LAKE STREET)

SCALE NONE / AS NOTED
 DATE 03-01-05
 DRAWN BY JRH
 CHECKED BY DEM

