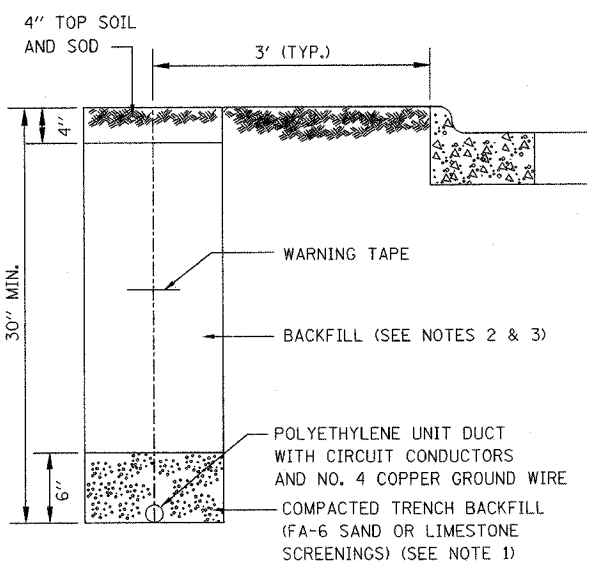


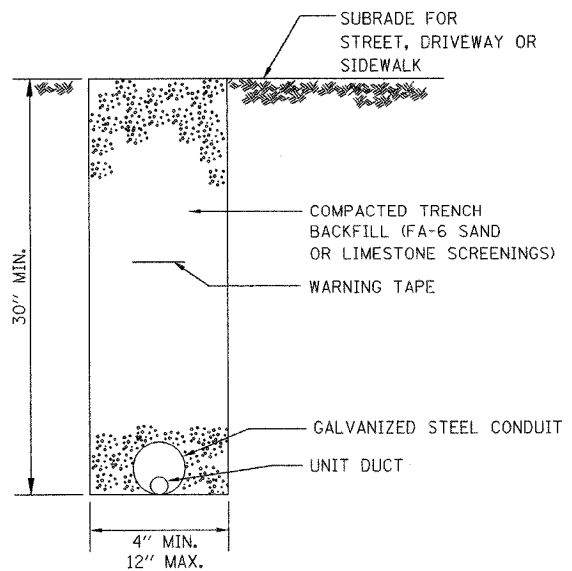
F.A.U. RTE.	SECTION	COUNTY	TOTAL SHEETS	SHEET NO.
3537	5Y-R-4	DUPAGE	392	281
FED. ROAD DIST. NO.	ILLINOIS PROJECT	CONTRACT NO. 62295		



**NOTES:**

- UNIT DUCT INSTALLED IN TRENCHES SHALL BE COVERED WITH A MINIMUM OF 6" OF COMPACTED FA-6 OR LIMESTONE SCREENINGS.
- IN GRASSY AREAS, THE BACKFILL MAY BE COMPACTED EARTH.
- TRENCHES WITHIN 2' OF PROPOSED OR EXISTING STREETS, DRIVEWAYS, OR SIDEWALKS SHALL BE BACKFILLED WITH COMPACTED FA-6 SAND OR LIMESTONE SCREENINGS.
- WHERE 2 OR MORE UNIT DUCTS RUN ADJACENT TO EACH OTHER, THEY SHALL BE PLACED IN A COMMON TRENCH SO AS NOT TO CROSS EACH OTHER.
- 6" WIDE REINFORCED METALLIC WARNING TAPE, RED WITH BLACK LETTERING TO READ "CAUTION-ELECTRICAL LINE BURIED BELOW". WARNING TAPE TO BE PLACED 1' MINIMUM TO 2' MAXIMUM BELOW FINISHED GRADE.
- ALL GRASSY AREAS DISTURBED DURING CONSTRUCTION SHALL BE RESTORED WITH 4" OF TOPSOIL AND SOD.

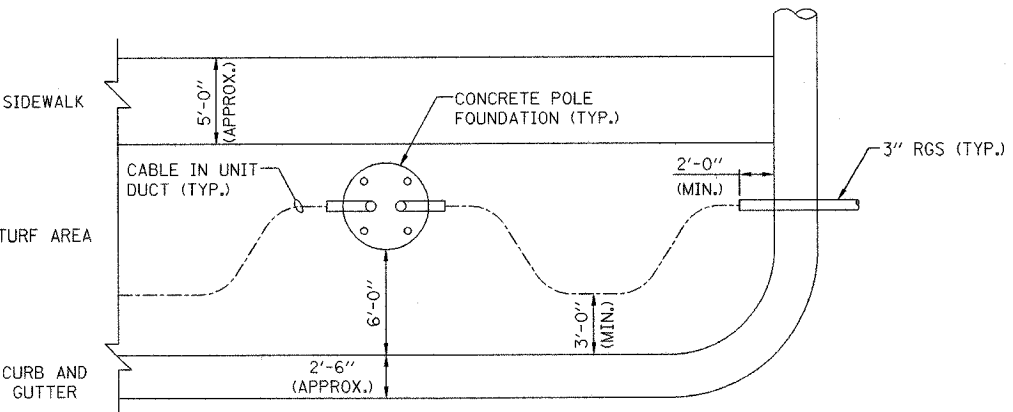
**UNITDUCT TRENCH**



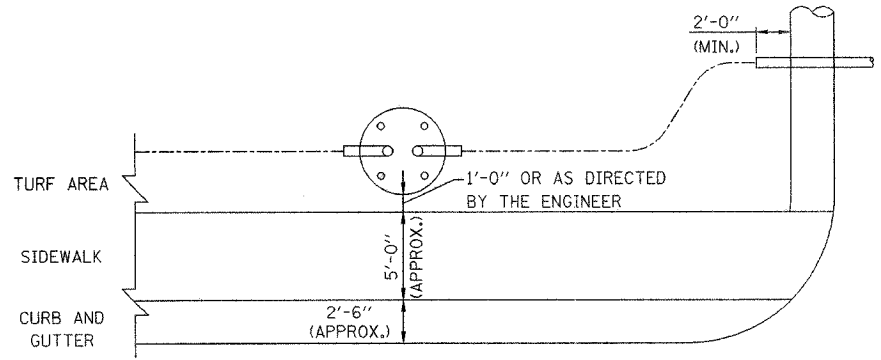
**NOTES:**

- CONDUIT SHALL BE HOT DIP GALVANIZED STEEL, A MINIMUM OF 2 1/2" IN DIAMETER.
- CONDUIT SHALL EXTEND A MINIMUM OF 1' BEYOND THE STREET, DRIVEWAY, OR SIDEWALK
- CONDUIT SHALL HAVE BOTH ENDS CAPPED UNTIL USED.
- WHEN PLACED INTO SERVICE, CONDUIT SHALL BE PROVIDED WITH AN INSULATED FIBER BUSHING, AND SEALED WITH A WORKABLE SOFT PLASTIC SEALING COMPOUND AT EACH END.
- 6" WIDE REINFORCED METALLIC WARNING TAPE, RED WITH BLACK LETTERING TO READ "CAUTION-ELECTRICAL LINE BURIED BELOW". WARNING TAPE TO BE PLACED 1' MINIMUM TO 2' MAXIMUM BELOW FINISHED GRADE.
- ALL GRASSY AREAS DISTURBED DURING CONSTRUCTION SHALL BE RESTORED WITH 4" OF TOPSOIL AND SOD.

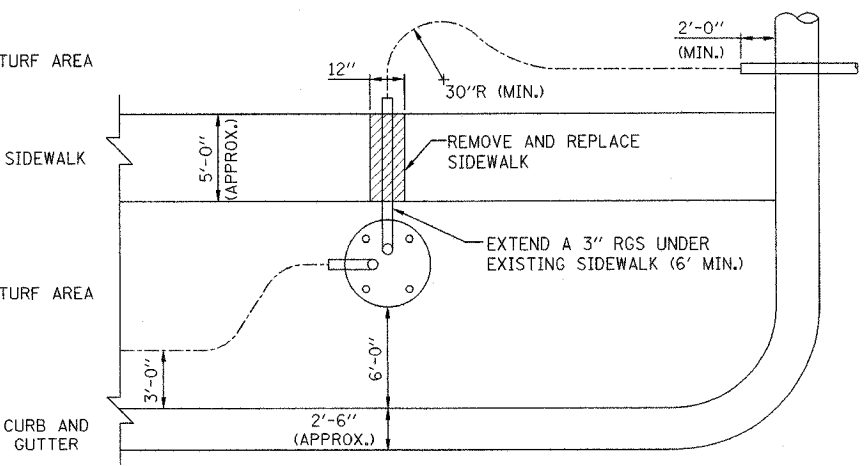
**CONDUIT TRENCH**



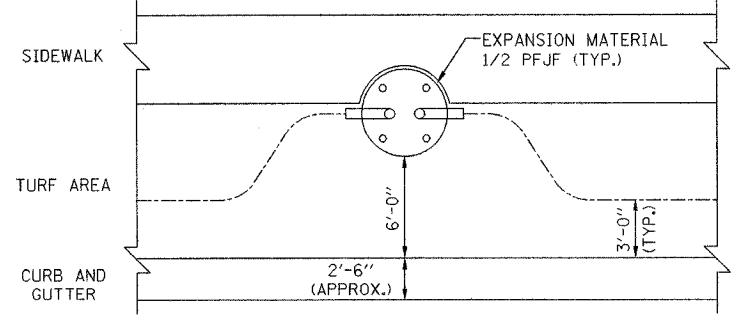
**"A"**



**"C"**

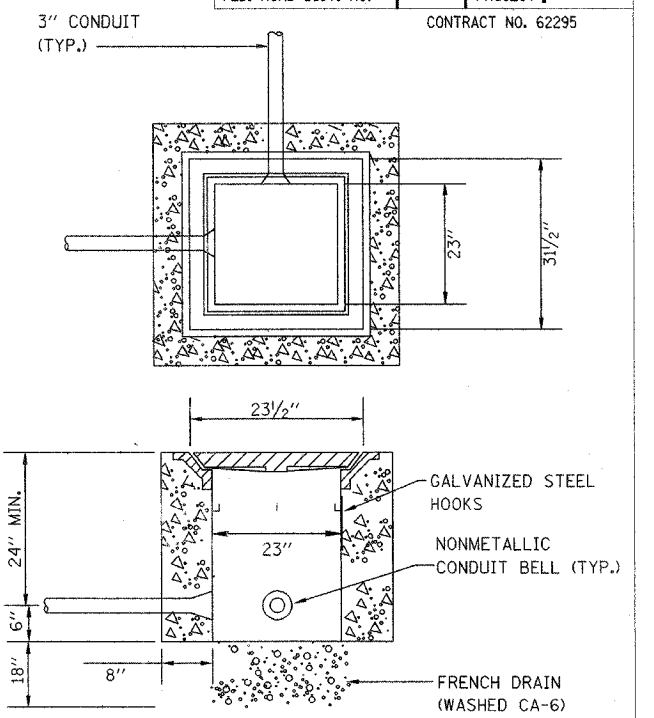


**"B"**



**"D"**

**TYPICAL UNIT DUCT AND CONDUIT INSTALLATION DETAILS**  
N.T.S.



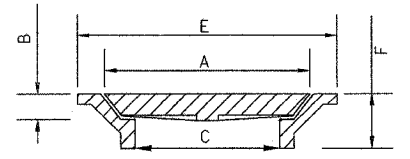
**HEAVY DUTY HANDHOLE DETAIL**

- CAD WELD #8 BARE STRANDED COPPER WIRE TO 5/8" X 10' COPPER CLAD GROUND ROD.
- DRILL AND TAP A METAL FRAME FOR 1/4-20. INSERT 1 INCH X 1/4-20 BOLT FROM THE INSIDE WITH GREASE ON THE THREADS TO ALLOW EASY REMOVAL AFTER CONCRETE IS SET. DRILL A 1/4 INCH HOLE IN THE LID FOR A NUT AND BOLT ATTACHMENT OF #8 JUMPER CABLE.
- CONNECT #8 COPPER WIRE FROM GROUND ROD TO FRAME AND JUMPER BETWEEN FRAME AND LID.

**GROUNDING REQUIREMENTS FOR ROADWAY TYPE STREET LIGHTING HANDHOLES**

**NOTES:**

COVER TO BE IMPRINTED WITH "STREET LIGHTING".  
FRAMES SHALL BE FURNISHED WITH TYPE "G" LIFTING HANDLES AND TYPE "T" HINGES WITH A SAFETY BAR.  
FRAMES SHALL BE GROUNDED PER N.E.C.



NEENAH R-6662-HH  
DIMENSIONS IN INCHES  
A: 23 1/2 X 23 1/2  
B: 1 3/4  
C: 23 X 23  
E: 31 1/2 X 31 1/2  
F: 4

**NOTES:**

- UNIT DUCT SHALL BE INSTALLED MIN. 3'-0" FROM B.O.C.
- CONTRACTOR SHALL MAKE AN EFFORT TO INSTALL RGS CONDUITS (UNDER DRIVEWAYS OR ROADWAY) AT THE SAME SIDE OF THE SIDEWALK AS THE POLE FOUNDATION (DETAIL "A").
- WHEN ITS NECESSARY TO CROSS THE EXISTING SIDEWALK, CONTRACTOR SHALL INSTALL A 3" RGS CONDUIT PERPENDICULAR TO THE SIDEWALK (DETAIL "B").
- WHEN LOCATION OF A POLE FOUNDATION FALLS COMPLETELY WITHIN THE EXISTING SIDEWALK, CONTRACTOR SHALL CONSTRUCT THE FOUNDATION AT THE SIDE OF SIDEWALK AWAY FROM THE ROAD. WHEN PARTIAL OVERLAP OCCURS, CONTRACTOR SHALL CONSTRUCT THE POLE FOUNDATION AS SHOWN ON DETAIL "D".



REVISIONS		ILLINOIS DEPARTMENT OF TRANSPORTATION VILLAGE OF ADDISON
NAME	DATE	
		DETAILS SHEET 4 MISCELLANEOUS DETAILS U.S. ROUTE 20 (LAKE STREET)
		SCALE NONE / AS NOTED
		DATE 03-01-05
		DRAWN BY JRH
		CHECKED BY DEM

3/15/2005 9:42:19 AM