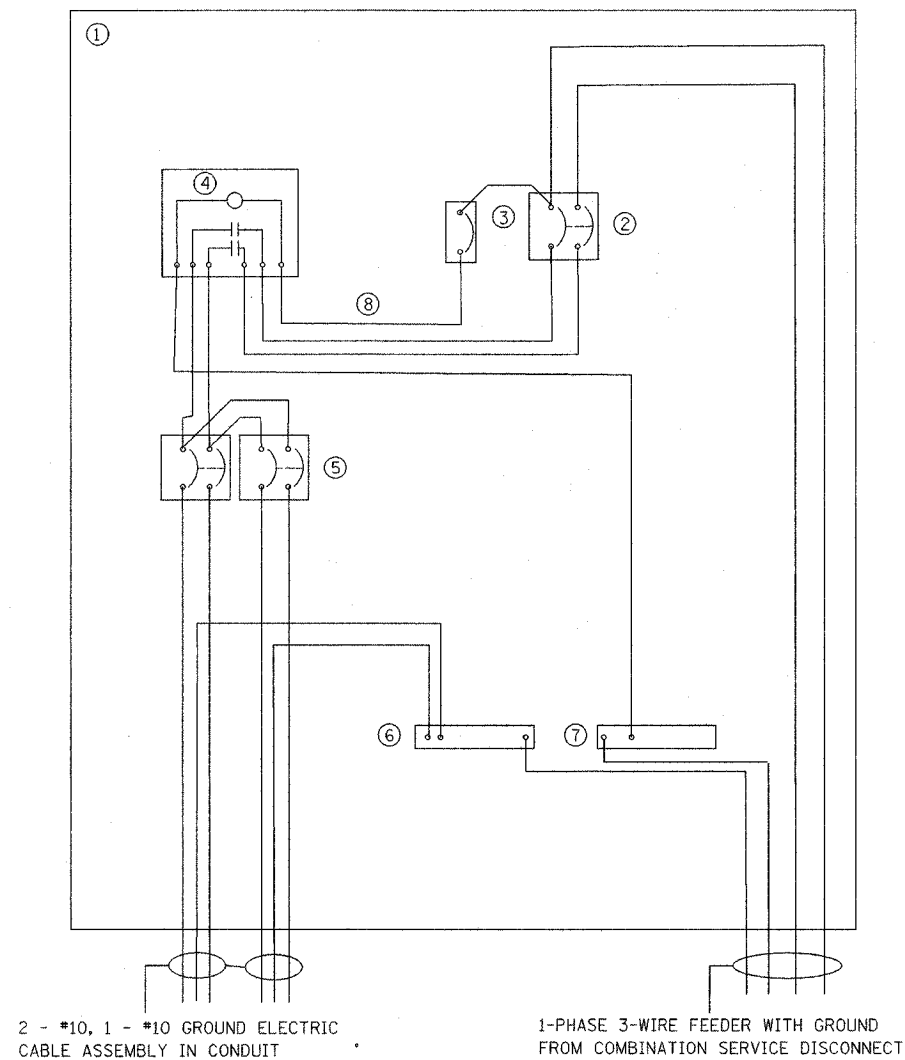


F.A.U. RTE.	SECTION	COUNTY	TOTAL SHEETS	SHEET NO.
3537	5Y-R-4	DUPAGE	392	280
FED. ROAD DIST. NO.	ILLINOIS	PROJECT		

CONTRACT NO. 62295



2 - #10, 1 - #10 GROUND ELECTRIC
CABLE ASSEMBLY IN CONDUIT

1-PHASE 3-WIRE FEEDER WITH GROUND
FROM COMBINATION SERVICE DISCONNECT

NOMENCLATURE

- ① NEMA 4X STAINLESS STEEL ENCLOSURE WITH THREE-POINT LATCHING HANDLE WITH PADLOCKING PROVISIONS. 22" X 18" X 8" MINIMUM. THE ENCLOSURE SHALL COMPLY WITH THE STANDARD SPECIFICATIONS ARTICLE 1085.34 (B) (3).
- ② 60AMP, 2 POLE, MAIN CIRCUIT BREAKER 240 V, 22 KAIC, GENERAL ELECTRIC TYPE "TEB" OR SQUARE D TYPE "FAL"
- ③ 15AMP, 1 POLE CIRCUIT BREAKER, 120V (TYPE "TEB" BY GENERAL ELECTRIC OR EQUAL).
- ④ ASTRONOMIC TIME SWITCH WITH RESERVE POWER OPTION AND 30AMP INDUCTIVE LOAD CONTACT RATING AND MECHANICALLY HELD CONTACTOR CONTROL BY "TORK" OR APPROVED EQUAL.
- ⑤ TWO 20AMP, 2 POLE CIRCUIT BREAKERS, 240V (TYPE "TEB" BY GENERAL ELECTRIC OR TYPE "FAL" BY SQUARE D).
- ⑥ 1" X 12" GROUND STRIP LABELED "GROUND", AND PAINTED GREEN.
- ⑦ 1" X 6" NEUTRAL STRIP LABELED "NEUTRAL".
- ⑧ PANEL INTERNAL WIRING SHALL BE EPR TYPE RHW. WIRING FOR POWER CIRCUITS SHALL BE #6 MINIMUM. WIRING FOR CONTROL CIRCUITS SHALL BE #12 MINIMUM. SERVICE AND LOAD CONDUCTORS SHALL BE AS INDICATED ON THE PLAN DRAWINGS.

COMBINATION POLE LIGHTING CONTROL CABINET SCHEMATIC



REVISIONS		ILLINOIS DEPARTMENT OF TRANSPORTATION VILLAGE OF ADDISON
NAME	DATE	
		DETAILS SHEET 5 COMB. POLE LIGHTING CONTROLLER DETAILS U.S. ROUTE 20 (LAKE STREET)
SCALE NONE / AS NOTED		DRAWN BY JRH
DATE 03-01-05		CHECKED BY DEM