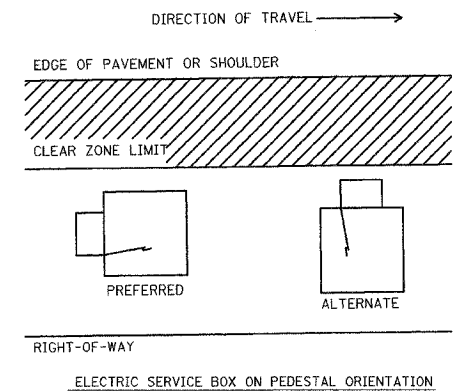
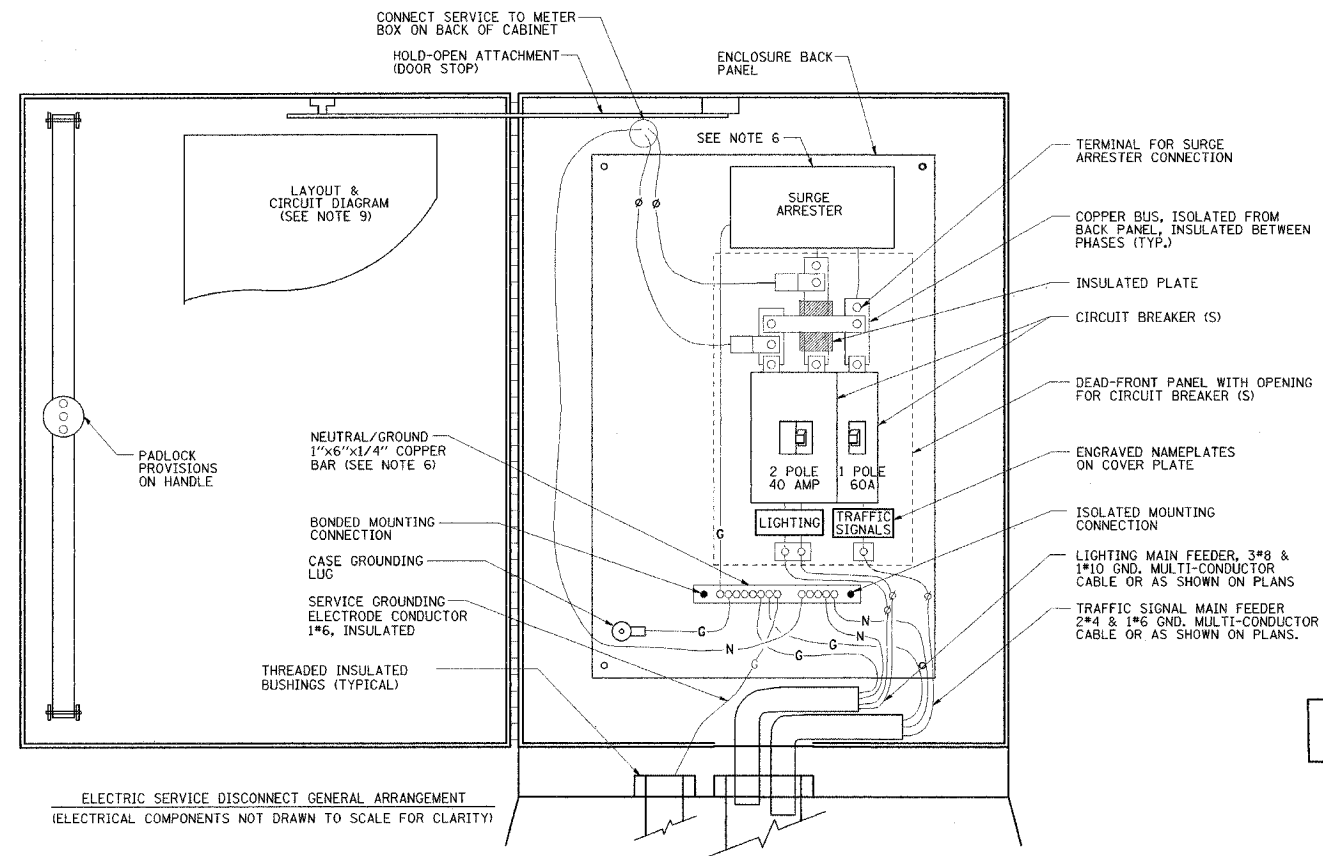
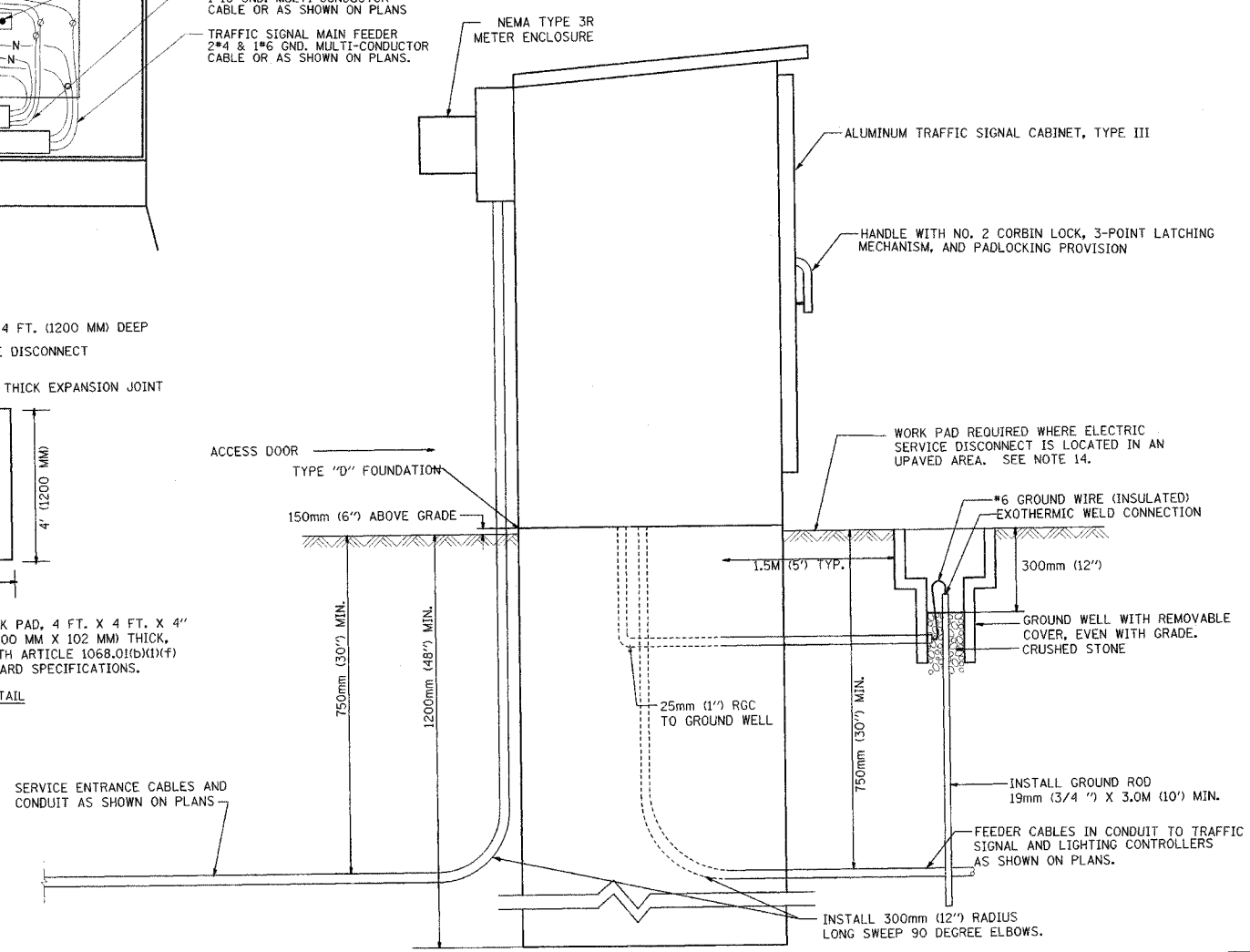
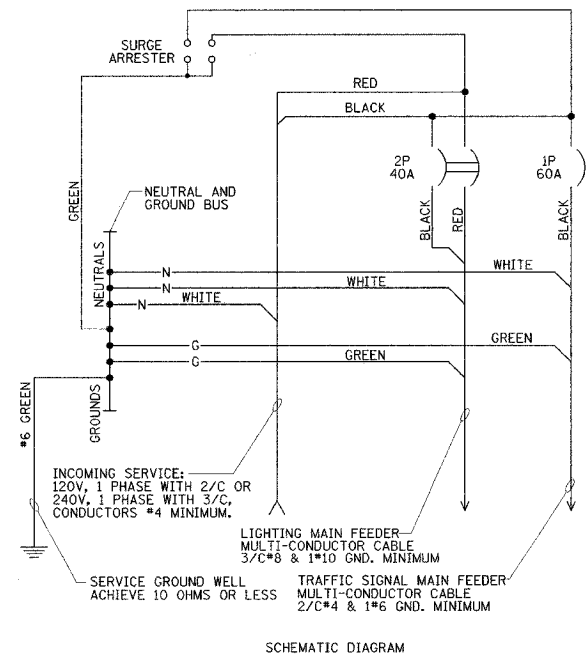
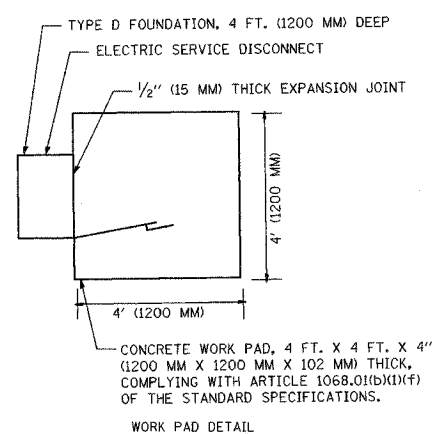


F.A.U. RTE.	SECTION	COUNTY	TOTAL SHEETS	SHEET NO.
3537	5Y-R-3	DUPAGE	392	283
FED. ROAD DIST. NO.		ILLINOIS PROJECT		



- NOTES:
- ELECTRIC SERVICE SHALL BE OF THE VOLTAGE INDICATED OR AS DESIGNATED BY THE ENGINEER. SERVICE CABLE AND CONDUIT SHALL BE COMPATIBLE WITH THE SERVICE.
  - THE ELECTRIC SERVICE EQUIPMENT ASSEMBLY SHALL BE UL LISTED AS SUITABLE FOR USE AS SERVICE ENTRANCE EQUIPMENT AND ACCEPTABLE TO THE ELECTRIC UTILITY.
  - THE ELECTRIC SERVICE DISCONNECT ENCLOSURE SHALL BE A TYPE III TRAFFIC SIGNAL CABINET, APPROXIMATELY 28" W X 48" H X 16" D, WITH A PIANO-HINGED DOOR, INSULATING BACK PANEL, LEVER HANDLE WITH 3-POINT LATCHING MECHANISM, PADLOCK PROVISIONS, AND DOOR STOP.
  - CIRCUIT BREAKERS SHALL BE THERMAL MAGNETIC BOLT-ON TYPE WITH A MINIMUM INTERRUPTING CAPACITY OF 25,000 SYMMETRICAL AMPERES AT 240 VOLTS. THEY SHALL BE LOCKABLE IN THE "OFF" POSITION FOR COMPLIANCE WITH OSHA LOCK-OUT/TAG-OUT REQUIREMENTS. HANDLES SHALL BE TRIP FREE.
  - THE SURGE PROTECTOR SHALL BE SUITABLE FOR 240/120 VOLT SINGLE PHASE 60HZ AC ELECTRICAL SERVICE, WITH A SURGE ENERGY CAPABILITY OF 2160 JOULES OR BETTER AT 8/20 MICRO-SECONDS, RATED -40 TO 60 DEGREES C., WITH LED OPERATING INDICATORS, AND SHALL BE UL LISTED PER UL 1449, JOSLYN ELECTRONICS SURGITRON III MODEL 1265-21 OR APPROVED EQUAL.
  - BUS BARS, CONNECTORS, AND LUGS SHALL BE COPPER, INSULATED AND ISOLATED, AND CONFIGURED TO PREVENT SHORTED CONDITIONS FROM TIGHTENING TERMINATIONS, ETC. THE OVERALL BUS SECTION SHALL BE CONFIGURED BEHIND A DEAD-FRONT PANEL WHICH IS REMOVABLE FOR ACCESS TO CONNECTIONS, OR THE ASSEMBLY SHALL BE A MANUFACTURED SPECIALTY PANELBOARD, CUTLER-HAMMER PRL2A OR APPROVED EQUAL.
  - THE COMBINATION GROUND AND NEUTRAL BAR SHALL BE CONFIGURED WITH SEPARATE GROUND AND NEUTRAL SECTIONS AND SPARE TERMINALS AS INDICATED. THE HEADS OF GROUND SCREWS SHALL BE PAINTED GREEN. THE HEADS OF NEUTRAL SCREWS SHALL BE PAINTED WHITE. THE SERVICE NEUTRAL AND SERVICE GROUNDING ELECTRODE CONDUCTOR SHALL BE TERMINATED ADJACENT TO EACH OTHER AT THE DIVIDE BETWEEN THE SECTIONS AND WIRING SHALL BE TERMINATED ONLY UPON THE APPROPRIATE SECTION.
  - THE WIRING TERMINALS, INCLUDING THE GROUND/NEUTRAL BAR SHALL BE ARRANGED TO PROVIDE ADEQUATE ROOM FOR PERFORMING FIELD TERMINATIONS.
  - A WEATHER-RESISTANT PLASTIC LAMINATED LAYOUT AND CIRCUIT DIAGRAM SHALL BE MECHANICALLY SECURED TO THE INTERIOR SIDE OF THE ENCLOSURE DOOR.
  - A 2-COLOR ENGRAVED PLASTIC NAMEPLATE, ATTACHED WITH SCREWS, AND ENGRAVED AS INDICATED, SHALL BE PROVIDED FOR EACH MAIN BREAKER.
  - LUGS AND CONNECTORS SHALL BE RATED FOR 75°C CONDUCTORS.
  - THE EXACT AND LOCATION OF THE ELECTRIC SERVICE DISCONNECT SHALL BE FIELD DETERMINED TO AVOID OBSTRUCTIONS AND PERMIT READY ACCESS FOR MAINTENANCE.
  - SIZES OF CONDUIT, CABLES AND CONDUCTORS, WHERE SHOWN, ARE MINIMUM SIZES, AND SHALL BE SUPERCEDED BY THOSE SHOWN ON PLAN DRAWINGS.
  - A WORK PAD SHALL BE CONSTRUCTED WHEREVER THE DOOR SIDE OF THE ELECTRIC SERVICE DISCONNECT DOES NOT FACE AND HORIZONTALLY ADJACENT TO A PAVED SURFACE. THE SLAB SHALL BE CONSTRUCTED IN ACCORDANCE WITH SECTION 1068.01(b)(1)(f) OF THE STANDARD SPECIFICATIONS. THE PAD SHALL BE SQUARE IN FRONT OF AND CENTERED ON THE FACE OF THE ELECTRICAL SERVICE DISCONNECT DOOR. IF ANOTHER PAVED SURFACE ENTERS THIS AREA, IT SHALL BE EXTENDED TO COVER THIS REQUIRED AREA. OR A WORK PAD SHALL BE BUILT TO COVER ANY UNPAVED PORTION THEREOF. ANY JOINTS BETWEEN THE PAD AND ADJACENT PAVED SURFACES SHALL BE MADE WITH 1/2" PREFORMED EXPANSION JOINT FILLER.
  - THE ELECTRIC SERVICE DISCONNECT SHALL BE LOCATED WITHIN THE IDOT RIGHT-OF-WAY, AND OUTSIDE THE CLEAR ZONE. THE DOOR OF THE ELECTRIC SERVICE DISCONNECT SHALL BE ORIENTED SO THAT A PERSON FACING THE ELECTRIC SERVICE DISCONNECT IS LOOKING TOWARD ONCOMING TRAFFIC (PREFERRED) OR ACROSS THE MAJOR STREET.
  - THE ELECTRIC SERVICE DISCONNECT FOUNDATION SHALL BE CONSTRUCTED IN COMPLIANCE WITH SECTION 878 OF THE STANDARD SPECIFICATIONS AND HIGHWAY STANDARD DRAWING 878001-03, AS MODIFIED ON THIS SHEET. THE GROUND ROD SHALL BE INSTALLED IN AN ACCESS WELL, AND SHALL NOT BE EMBEDDED IN THE FOUNDATION.



REVISIONS		ILLINOIS DEPARTMENT OF TRANSPORTATION VILLAGE OF ADDISON
NAME	DATE	
		DETAILS SHEET 6 COMBINATION LIGHTING AND TRAFFIC ELECTRIC SERVICE BOX ON PEDESTAL U.S. ROUTE 20 (LAKE STREET)
		SCALE NONE/AS NOTED
		DATE 03-01-05
		DRAWN BY JRH
		CHECKED BY DEM



PEDESTAL MOUNT SERVICE BOX ELEVATION