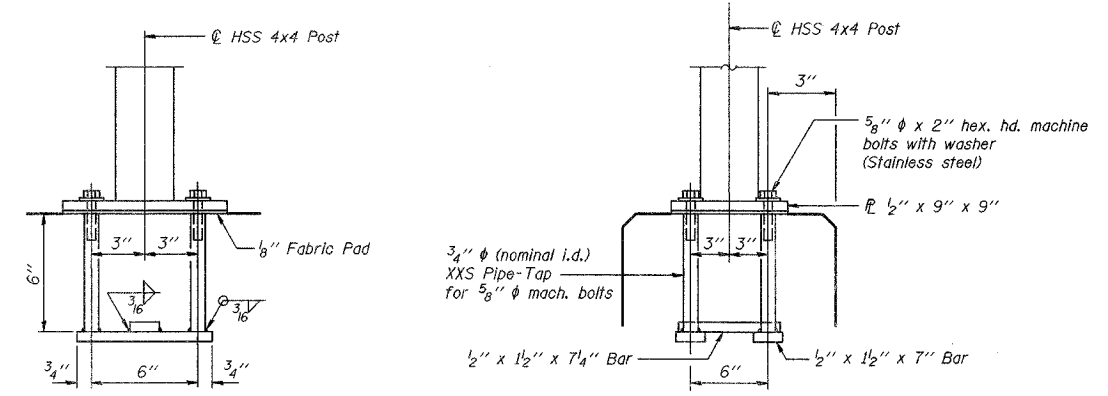
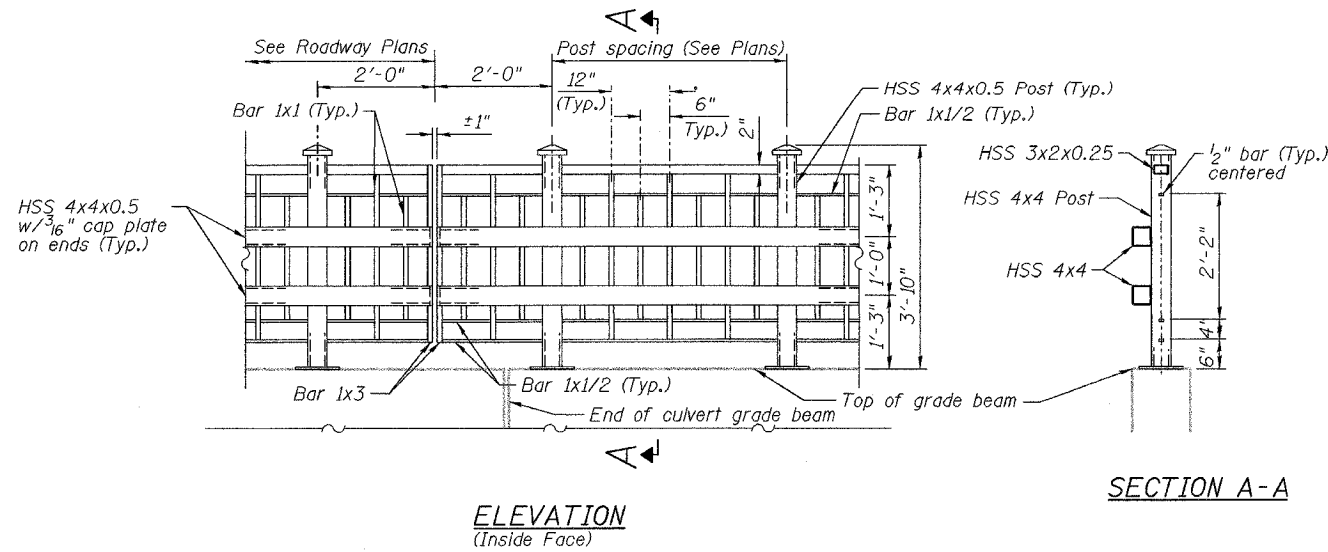


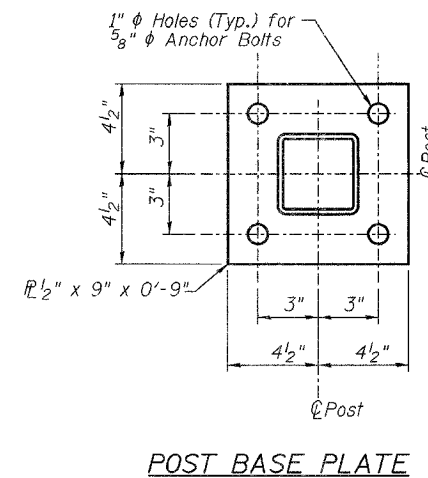
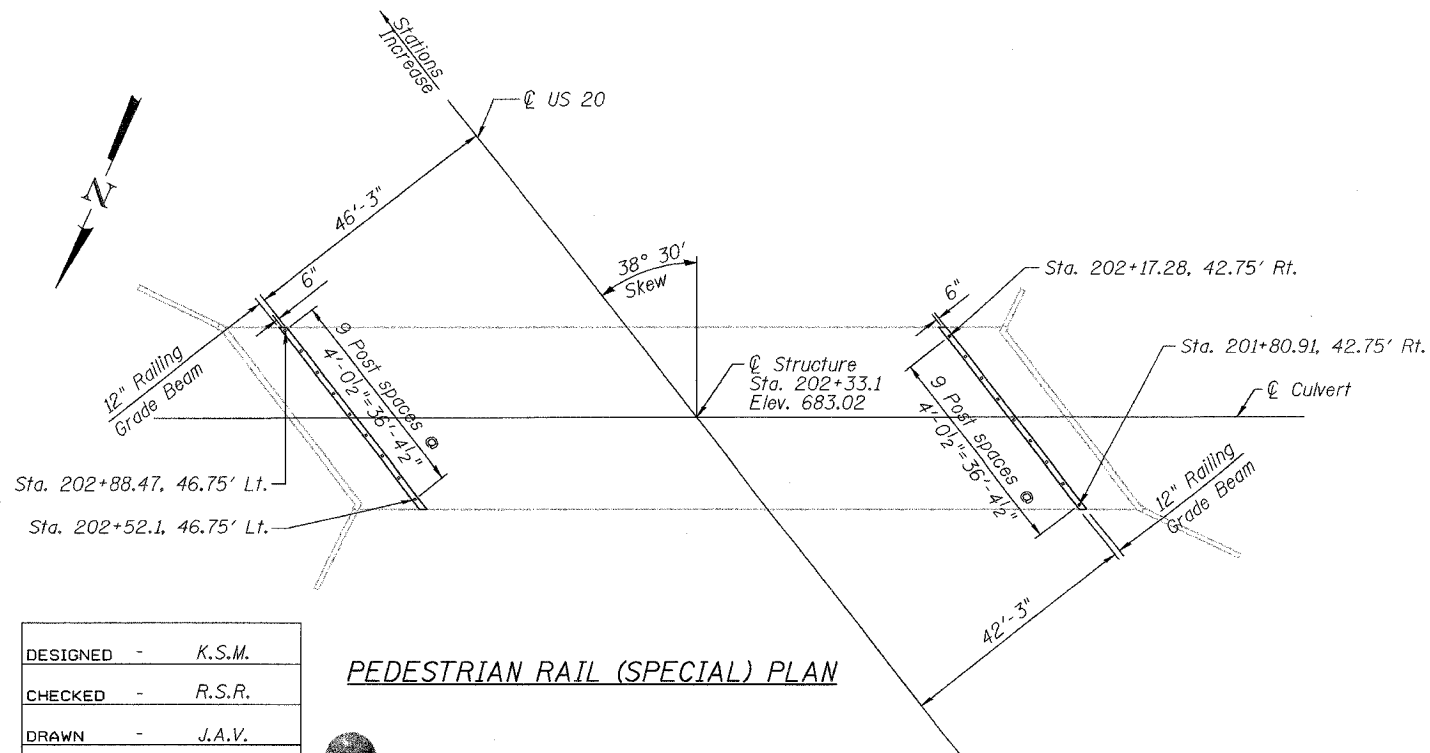
STATE OF ILLINOIS
DEPARTMENT OF TRANSPORTATION

ROUTE NO.	SECTION	COUNTY	DATE	SHEET	SHEET NO. 6 10 SHEETS
F.A.U. Rt. 3537	5Y-R-4	DUPAGE	3/07	2/0	
FED. ROAD DIST. NO. 1		ILLINOIS	FED. AID PROJECT		
CONTRACT No. 62295					



BILL OF MATERIAL

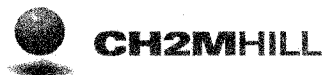
Item	Unit	Quantity
Pedestrian Rail (Special)	Foot	80.8



NOTES:

- All tubing shall conform to ASTM A500, Grade B.
- All plate and bars shall conform to AASHTO M270, Grade 36.
- All components shall be connected by continuous fillet welds using minimum welds per AISC welding code D1.1.
- Cap plates, minimum thickness 3/16", shall be installed on all open ends of tubes.
- If the option of drilling and epoxy grouting the anchor rods is chosen, the Contractor shall use the capsule or the adhesive cartridge type anchor rods that have been previously tested and given a prior approval by the Department. The Contractor shall install these anchor rods in pre-drilled holes according to the manufacturer's recommendations and procedures. The capsule or the adhesive cartridge shall be sealed with pre-measured amounts of the adhesive chemical.
- Space reinforcement to miss anchor rods.

DESIGNED	-	K.S.M.
CHECKED	-	R.S.R.
DRAWN	-	J.A.V.
CHECKED	-	K.S.M.



PEDESTRIAN RAIL DETAILS
US ROUTE 20 (LAKE STREET)
OVER WESTWOOD CREEK
F.A.U. Rt. 3537 SEC 5Y-R-4
DuPAGE COUNTY
STATION 202+33.1
STRUCTURE NO. 022-0175

11-11-2004