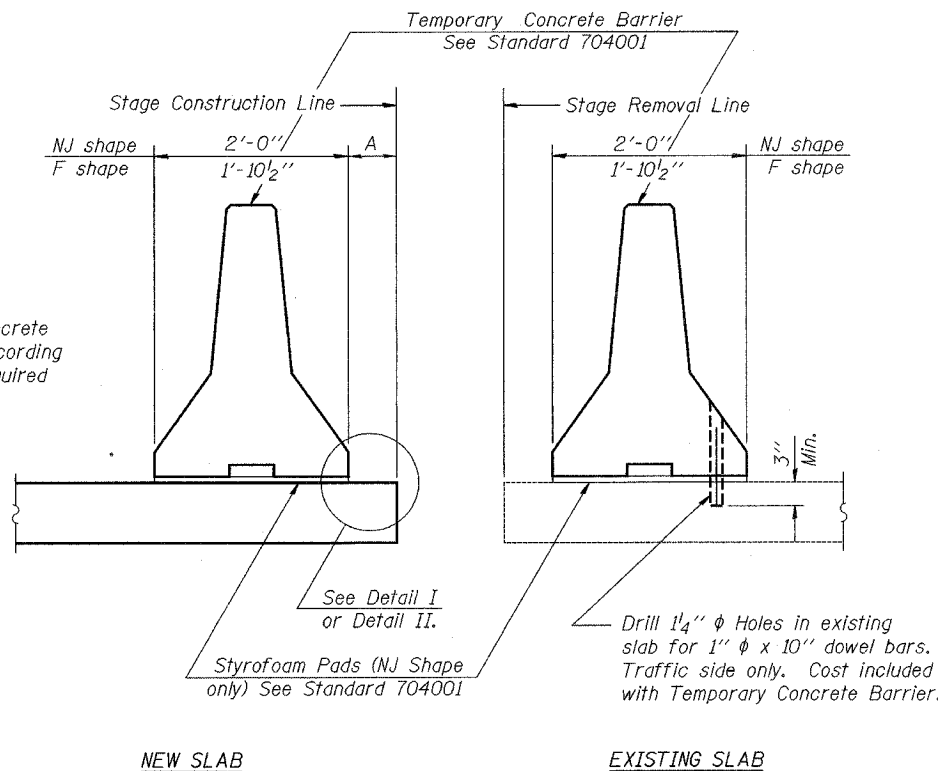


STATE OF ILLINOIS  
DEPARTMENT OF TRANSPORTATION

ROUTE NO.	SECTION	COUNTY	TOTAL SHEETS	SHEET NO.	SHEET NO. 8 10 SHEETS
F.A.U. Rt. 3537	5Y-R-4	DUPAGE	392	292	
FED. ROAD DIST. NO. 1	ILLINOIS	FED. AID PROJECT	CONTRACT No. 62295		

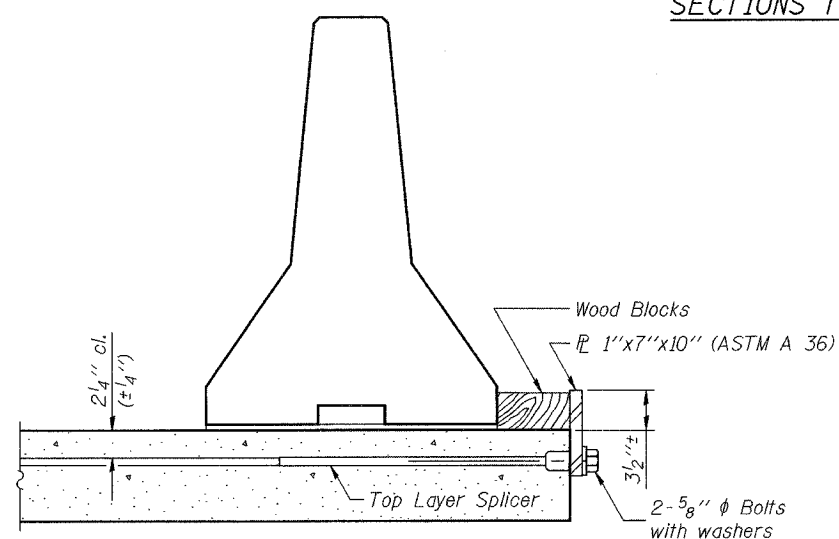


When "A" is 3'-6" or less, the temporary concrete barrier shall be anchored to the new slab according to Detail I or Detail II. No anchorage is required when "A" is greater than 3'-6".

NEW SLAB

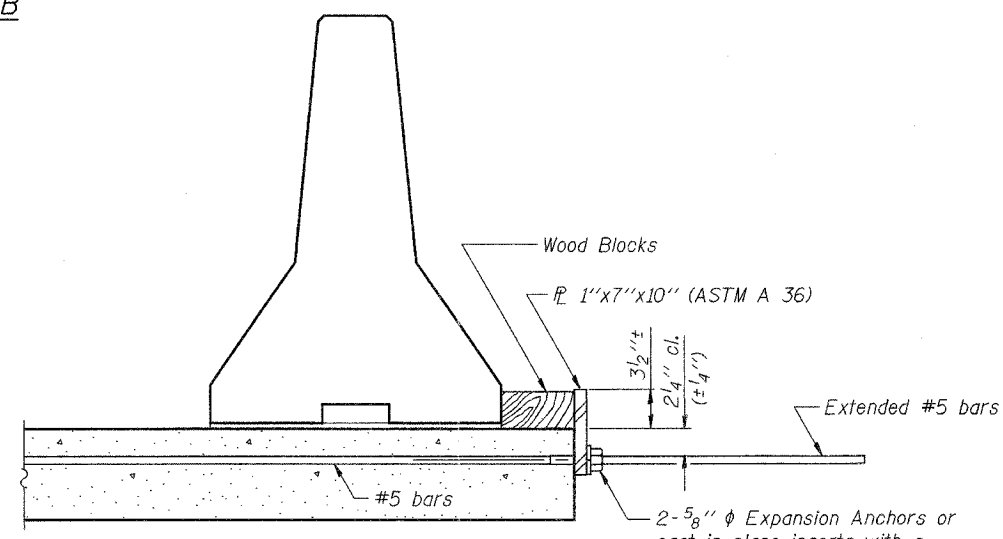
EXISTING SLAB

SECTIONS THRU SLAB



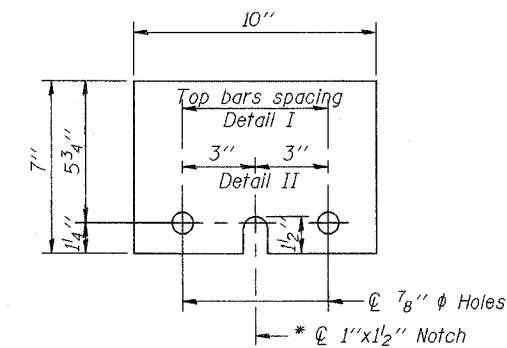
DETAIL I

The 1"x7"x10" Plate shall not be removed until Stage II Construction forms and reinforcement bars are in place.



DETAIL II

The 1"x7"x10" Plate shall not be removed until Stage II Construction forms and all reinforcement bars are in place and the concrete is ready to be placed.



1" x 7" x 10"

\* Required only with Detail II

TEMPORARY CONCRETE BARRIER  
FOR STAGE CONSTRUCTION

DESIGNED	-	K.S.M.
CHECKED	-	R.S.R.
DRAWN	-	J.A.V.
CHECKED	-	K.S.M.



TEMPORARY CONCRETE BARRIER  
FOR STAGE CONSTRUCTION  
US ROUTE 20 (LAKE STREET)  
OVER WESTWOOD CREEK  
F.A.U. Rt. 3537 SEC 5Y-R-4  
DuPAGE COUNTY  
STATION 202+33.1  
STRUCTURE NO. 022-0175