

STATE OF ILLINOIS
DEPARTMENT OF TRANSPORTATION

ROUTE NO.	SECTION	COUNTY	SHEETS	SHEET NO.	SHEET NO. 1
F.A.U. Rt. 3537	5Y-R-4	DUPAGE	392	215	2 SHEETS
FED. ROAD DIST. NO. 1	ILLINOIS	FED. AID PROJECT-	CONTRACT No. 62295		

NOTES:

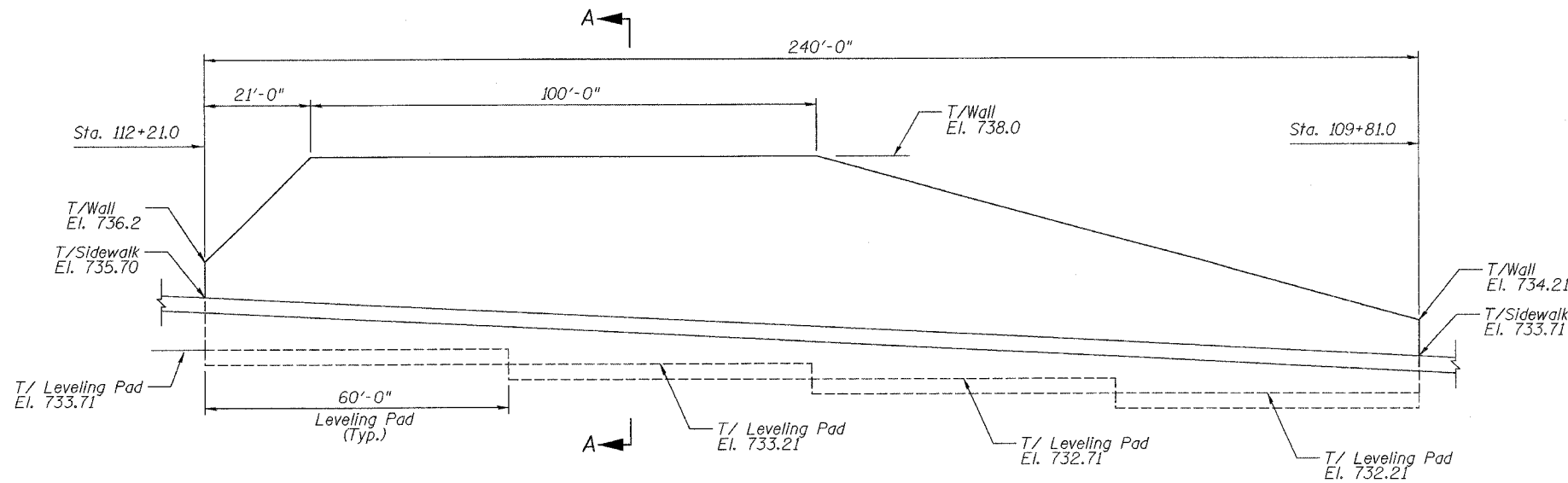
- Section A-A through wall is pictorial only and is not intended to convey or imply any particular block or design.
- Wall shall be designed for a traffic surcharge of 250 psf in addition to all other required loads.

BILL OF MATERIAL

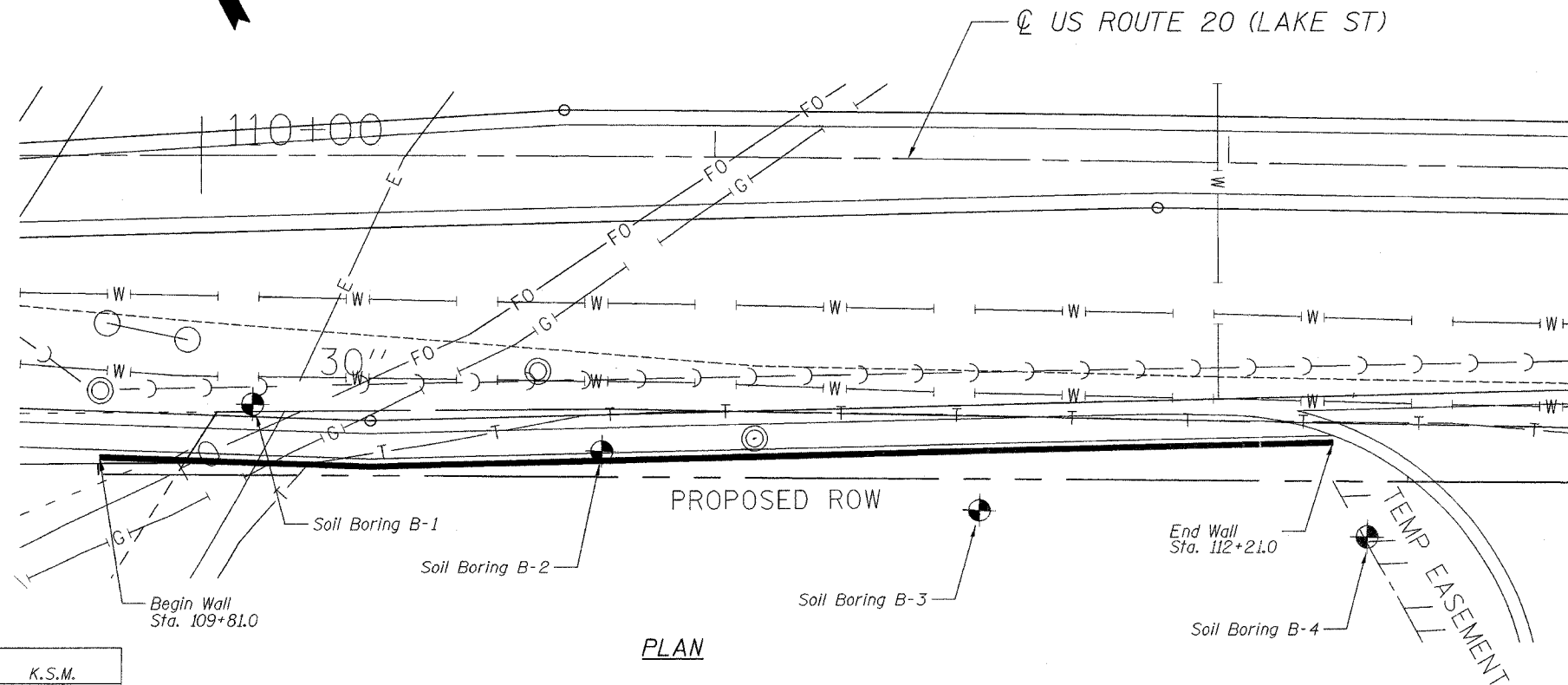
Item	Unit	Quantity
Segmental Concrete Block Wall	Sq Ft	1004

HORIZONTAL ALIGNMENT TABLE

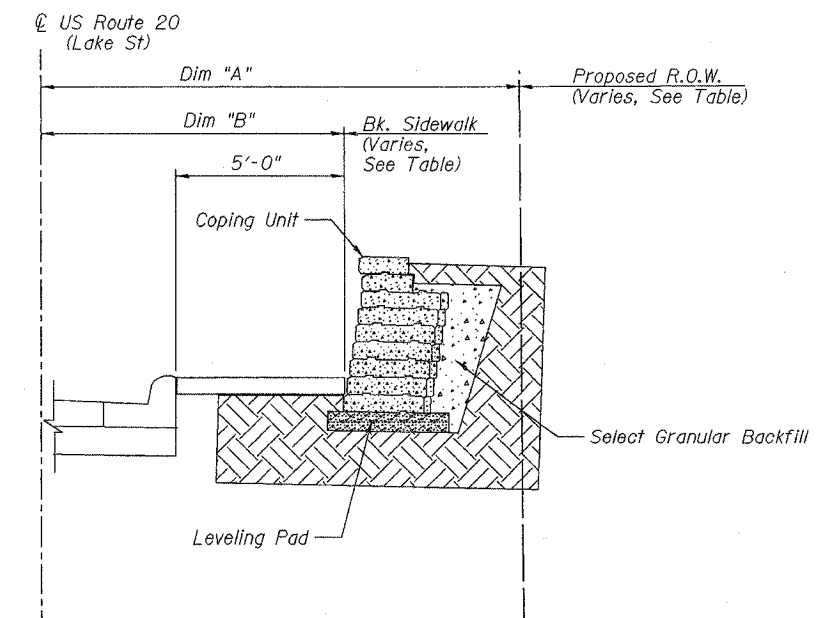
Station	Dim "A"	Dim "B"
109+81	62.0'	56.77'
110+33.01	62.03'	58.71'
112+21.0	62.33'	51.70'



ELEVATION
(Looking South)



PLAN



SECTION A-A

RETAINING WALL 1
US ROUTE 20 (LAKE ST)
F.A.U. RT. 3537 SEC 5Y-R-4
DU PAGE COUNTY
STATION 109+81.00 TO STATION 112+21.00

DESIGNED -	K.S.M.
CHECKED -	E.H.W.
DRAWN -	A.L.S.
CHECKED -	K.S.M.



4-11-2003

J:\Illinois\1464_1464\1464\1464\101-1b.dwg