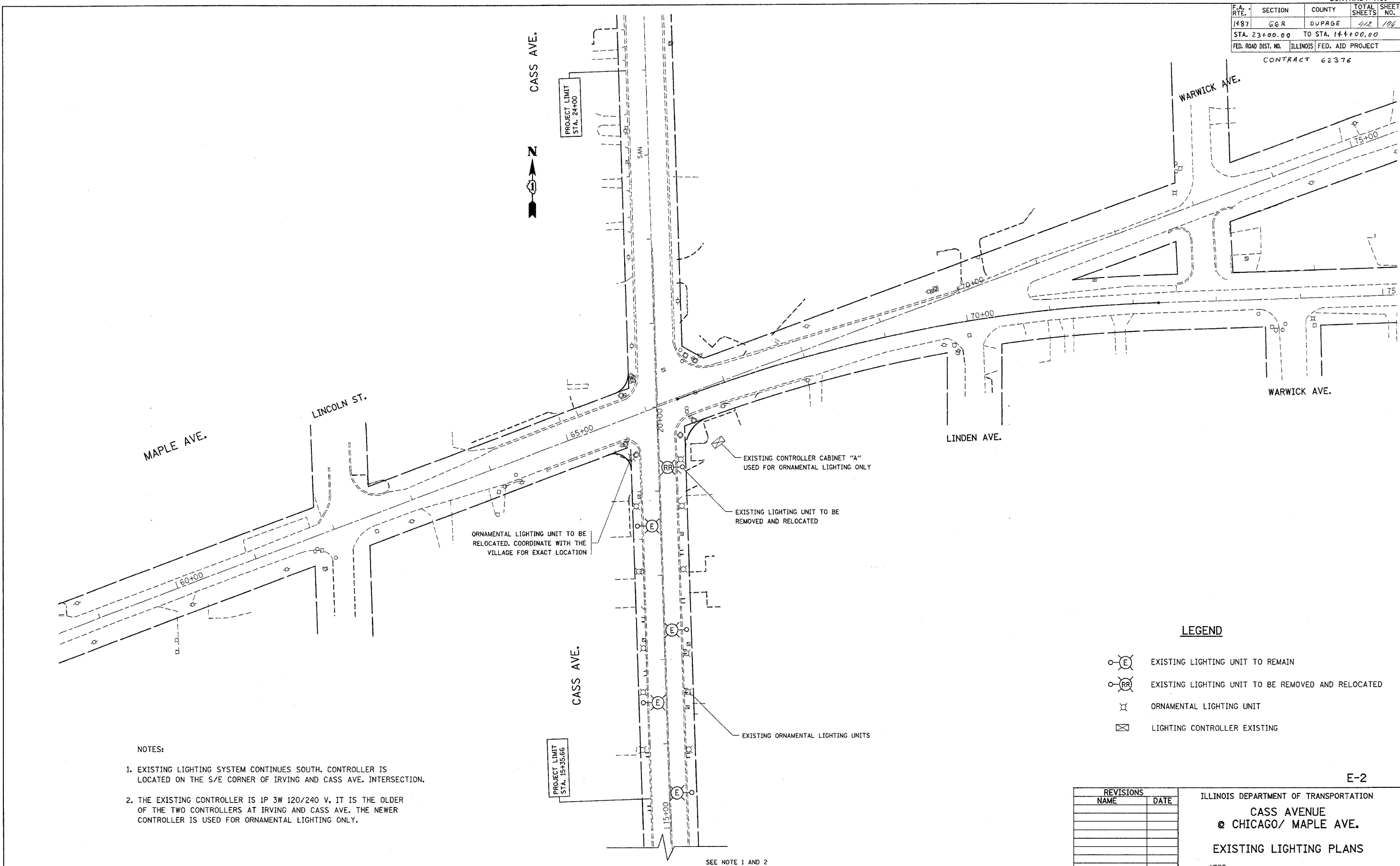


CONTRACT NO.			
F.A. RTE.	SECTION	COUNTY	TOTAL SHEETS
1487	G6R	DUPAGE	412
STA. 23+00.00		TO STA. 14+00.00	
FED. ROAD DIST. NO.	ILLINOIS	FED. AID PROJECT	
CONTRACT 62376			



- NOTES:
1. EXISTING LIGHTING SYSTEM CONTINUES SOUTH. CONTROLLER IS LOCATED ON THE S/E CORNER OF IRVING AND CASS AVE. INTERSECTION.
 2. THE EXISTING CONTROLLER IS 1P 3W 120/240 V. IT IS THE OLDER OF THE TWO CONTROLLERS AT IRVING AND CASS AVE. THE NEWER CONTROLLER IS USED FOR ORNAMENTAL LIGHTING ONLY.

SEE NOTE 1 AND 2

LEGEND

- E EXISTING LIGHTING UNIT TO REMAIN
- RR EXISTING LIGHTING UNIT TO BE REMOVED AND RELOCATED
- ⊠ ORNAMENTAL LIGHTING UNIT
- ⊞ LIGHTING CONTROLLER EXISTING

E-2

REVISIONS	
NAME	DATE

ILLINOIS DEPARTMENT OF TRANSPORTATION
CASS AVENUE
@ CHICAGO/ MAPLE AVE.
EXISTING LIGHTING PLANS

SCALE: VERT. _____
 HORIZ. _____
 DATE 11/17/2004

DRAWN BY 100T
 CHECKED BY 100T