

62430

F.A.P. RTE.	SECTION	COUNTY	TOTAL SHEETS	SHEET NO.
350	3321-1RS	COOK	24	1

STATE OF ILLINOIS  
DEPARTMENT OF TRANSPORTATION  
DIVISION OF HIGHWAYS

**PROPOSED  
HIGHWAY PLANS**

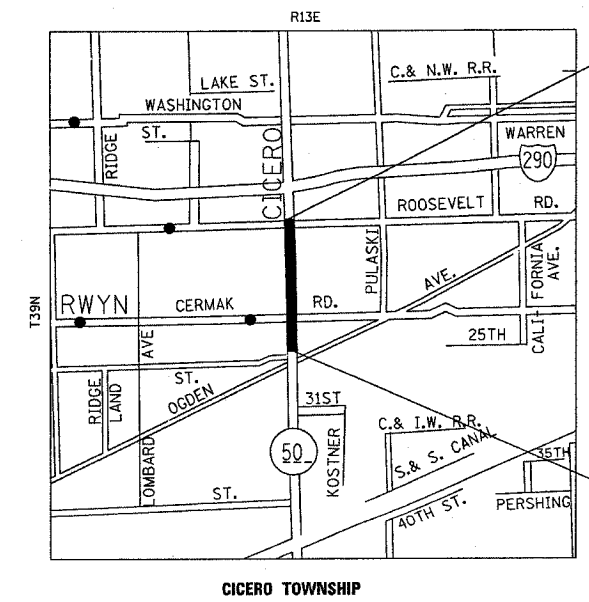
D-91-149-02

FOR INDEX OF SHEETS, SEE SHEET NO. 2

IMPROVEMENT IS LOCATED IN  
THE VILLAGE OF CICERO



F.A.P. ROUTE 350 (IL. ROUTE 50)  
SECTION: 3321-1RS  
ROOSEVELT RD. TO NORTH OF OGDEN AVE.  
RESURFACING (MAINTENANCE)  
COOK COUNTY  
C-91-149-02



IMPROVEMENT ENDS  
STA 639+23

TRAFFIC DATA  
2002 ADT = 34600  
SPEED LIMIT = 30-35 MPH

IMPROVEMENT BEGINS  
STA 560+87

OMISSION:  
STA 582+39.7 TO 583+29.5  
STA 603+63 TO 607+71

GROSS LENGTH OF IMPROVEMENT = 7836 FT (1.48 MILES)  
NET LENGTH OF IMPROVEMENT = 7738 FT (1.47 MILES)

SCALE  
NO SCALE

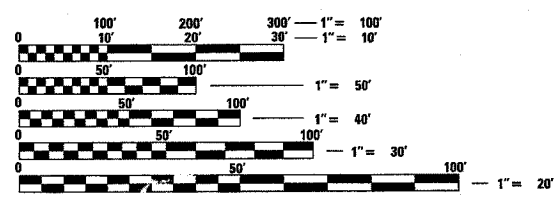
STATE OF ILLINOIS  
DEPARTMENT OF TRANSPORTATION  
DIVISION OF HIGHWAYS

SUBMITTED March 25, 2005  
Debra O'Keefe, P.E.  
DEPUTY DIRECTOR OF HIGHWAYS, REGION ENGINEER

May 13, 2005  
Mike Hine, P.E.  
ENGINEER OF DESIGN AND ENVIRONMENT

May 13, 2005  
Victor Moders, P.E.  
DIRECTOR OF HIGHWAYS, CHIEF ENGINEER

**PRINTED BY THE AUTHORITY  
OF THE STATE OF ILLINOIS**



FULL SIZE PLANS HAVE BEEN PREPARED USING STANDARD ENGINEERING SCALES. REDUCED SIZED PLANS WILL NOT CONFORM TO STANDARD SCALES. IN MAKING MEASUREMENTS ON REDUCED PLANS, THE ABOVE SCALES MAY BE USED.

J.U.L.I.E.  
JOINT UTILITY LOCATION INFORMATION FOR EXCAVATION  
1-800-892-0123

CONTRACT NO. 62430

DISTRICT 1 - DESIGN  
PLAN PREPARATION ENGINEERS: KEN ENG'ISSAM RAYYAN (847) 705-4240

13:28:05 03/24/2005