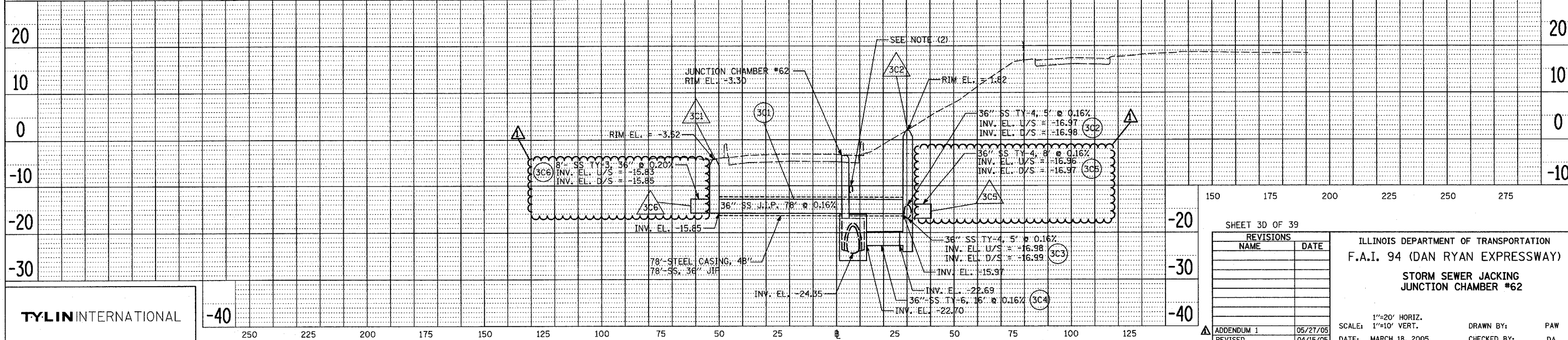
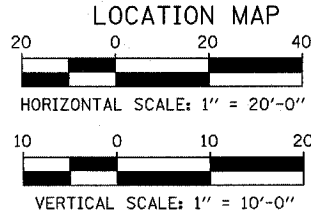
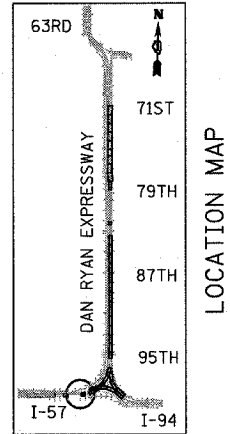
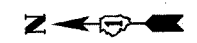


NOTES:

1. FOR SIZE AND LOCATION OF PROPOSED JUNCTION CHAMBER NO. 62 SEE STRUCTURAL PLANS FOR DETAILS.
2. SEWER LOCATION AND DEPTH ARE SHOWN AS INDICATED WITH NO SURVEY DATA AVAILABLE. THE CONTRACTOR SHALL VERIFY LOCATION AND DEPTH PRIOR TO JACKING OPERATION. COST SHALL BE INCLUDED IN THE SEWER PIPE JACKED IN PLACE.



TYLIN INTERNATIONAL

-40

SHEET 3D OF 39

REVISIONS	
NAME	DATE

ILLINOIS DEPARTMENT OF TRANSPORTATION
 F.A.I. 94 (DAN RYAN EXPRESSWAY)
 STORM SEWER JACKING
 JUNCTION CHAMBER #62

SCALE: 1"=20' HORIZ.
 1"=10' VERT.
 DATE: MARCH 18, 2005
 DRAWN BY: PAW
 CHECKED BY: DA