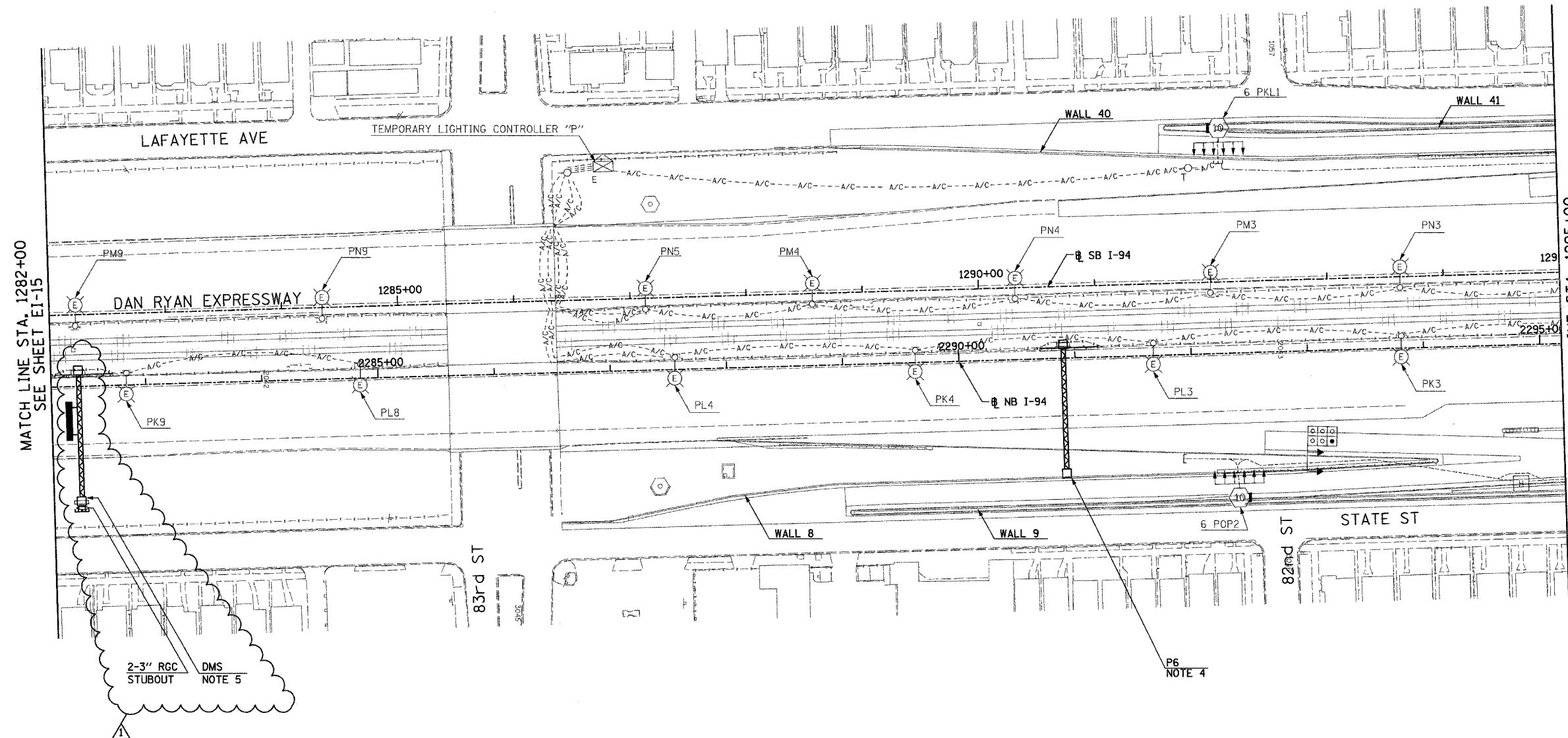


F.A.I. RTE.	SECTION	COUNTY	TOTAL SHEETS	SHEET NO.
90/94	*	COOK	860	391
STA. 1282+00 TO STA. 1295+00				
FED. ROAD DIST. NO.	ILLINOIS	FED. AID PROJECT		
* (1516.1, 1717 & 1818) R-8		62694		

NOTES:

- SEE DRAWINGS EI-100 AND EI-101 FOR ELECTRICAL SYMBOLS AND ABBREVIATIONS.
- COORDINATE ALL WORK WITH IDOT CONTRACTS 62583 AND 62695.
- UNLESS NOTED OTHERWISE, ALL ITEMS AND WORK SHOWN IN HEAVY LINE WEIGHT ON THIS DRAWING ARE PROPOSED NEW ITEMS AND WORK.
- SIGN STRUCTURE SHALL BE PROVIDED UNDER THIS CONTRACT. SIGN LUMINAIRES, DISCONNECT SWITCH, WIRING AND CONNECTIONS SHALL BE PROVIDED UNDER CONTRACT 62583.
- PROVIDE 2-3" RGC CONDUITS IN DMS FOUNDATION FOR ELECTRICAL CABLE TO BE PROVIDED UNDER CONTRACT 62583.

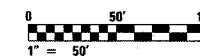


MATCH LINE STA. 1282+00
SEE SHEET EI-15

MATCH LINE STA. 1295+00
SEE SHEET EI-17

2-3" RGC
STUBOUT
DMS
NOTE 5

P6
NOTE 4



SINGH 300 N. ADAMS ST.
CHICAGO, IL 60606
SINGH & ASSOCIATES, INC. TEL: (312) 629-0240
CONSULTING ENGINEERS FAX: (312) 629-8449

REVISIONS	
NAME	DATE
REVISED	5/06/05

ILLINOIS DEPARTMENT OF TRANSPORTATION
F.A.I. 90/94 (DAN RYAN EXPRESSWAY)

ELECTRICAL INFRASTRUCTURE PLANS
PROPOSED IMPROVEMENTS

SCALE: 1"=50' DRAWN BY: VK
DATE: MARCH 18, 2005 CHECKED BY: TM

▲

ADDENDUM 1 05/27/05

17A/EI-16

5/25/2005 10:39:52 AM