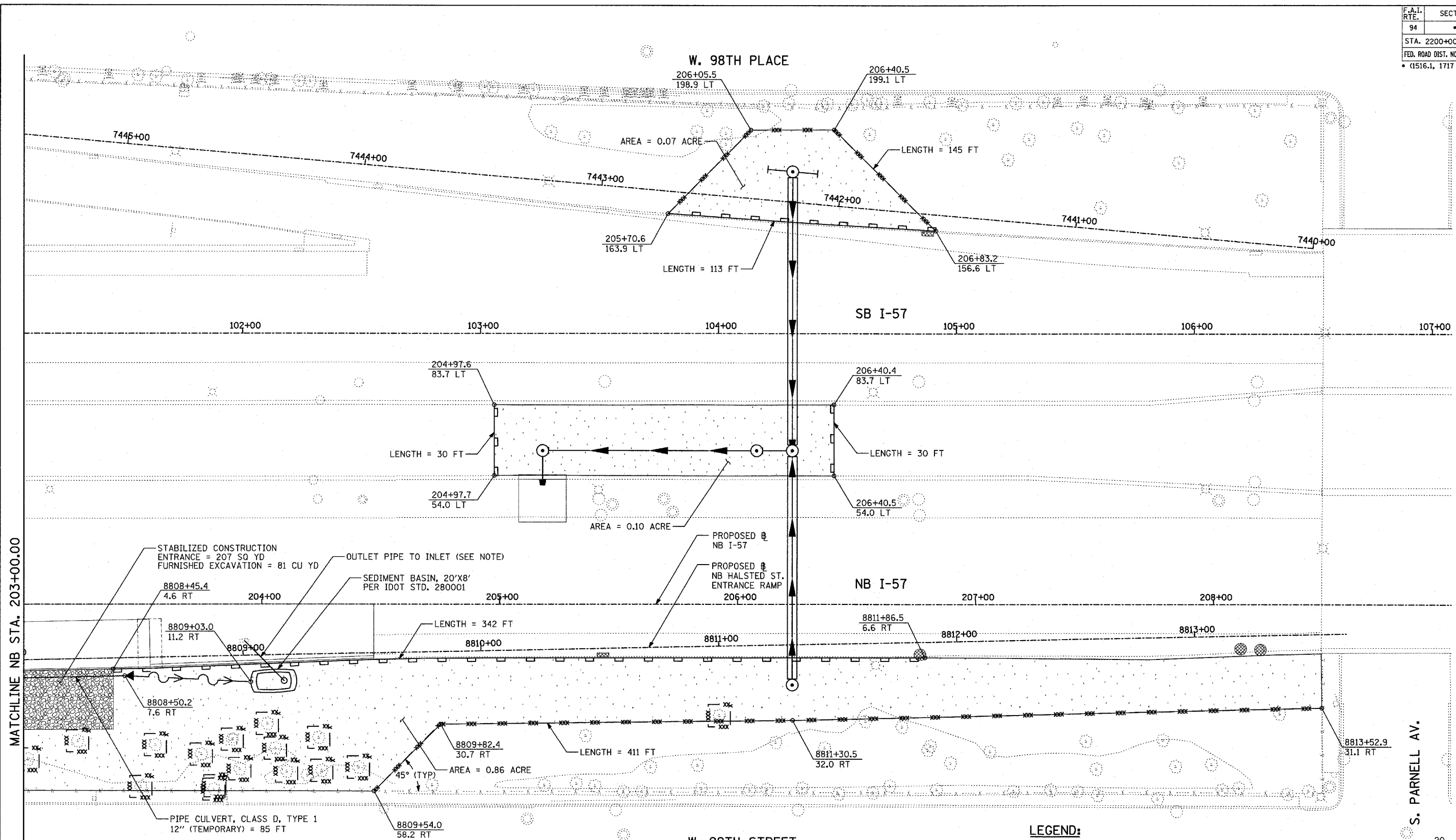
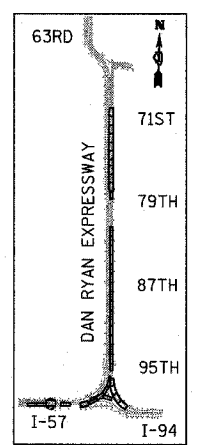


F.A.I. RTE.	SECTION	COUNTY	TOTAL SHEETS	SHEET NO.
94		COOK	860	160
STA. 2200+00.00 TO STA. 2362+00.00				
FED. ROAD DIST. NO.	ILLINOIS	FED. AID PROJECT		
• (1516.1, 1717 & 1818) R-8		62694		

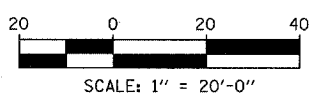


MATCHLINE NB STA. 203+00.00



LOCATION MAP

S. PARNELL AV.



- LEGEND:**
- TEMPORARY EROSION CONTROL SEEDING
  - PERIMETER EROSION BARRIER
  - INLET FILTER, TO BE INSTALLED IN OFF PROJECT DRAINAGE STRUCTURES ACCEPTING STORMWATER RUNOFF
  - TEMPORARY FENCE
  - TEMPORARY DITCH
  - TEMPORARY DITCH CHECK
  - TEMPORARY FENCE FOR TREE PROTECTION (15 FEET PER SIDE = 60 FEET TOTAL)

REVISIONS	
NAME	DATE

ILLINOIS DEPARTMENT OF TRANSPORTATION  
 F.A.I. 94 (DAN RYAN EXPRESSWAY)  
 EROSION CONTROL PLAN  
 NB HALSTED STREET ENTRANCE RAMP  
 NB I-57 STA. 203+00.00 TO 209+00.00

SCALE: 1"=20'  
 DATE: MARCH 18, 2005

DRAWN BY: JJS  
 CHECKED BY: JPM, MAG

TYLIN INTERNATIONAL

TOTAL NUMBER OF TREES TO BE PROTECTED THIS SHEET = 15

NOTE: UPON COMPLETION OF PROPOSED RAMP, CONNECT OUTLET TO PROPOSED DRAINAGE STRUCTURE #3A7 (SEE DRAINAGE AND UTILITY PLAN)

03/25/2005 01:31:53 PM