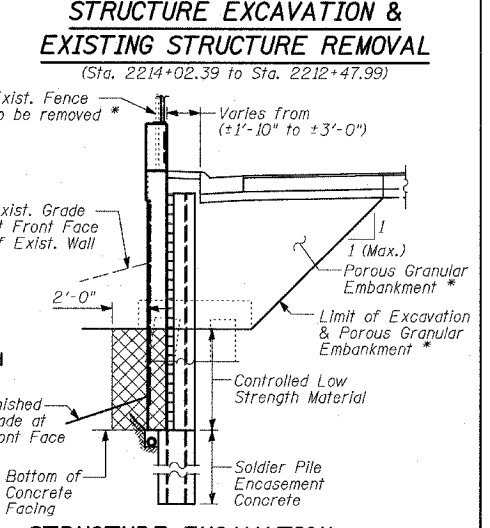
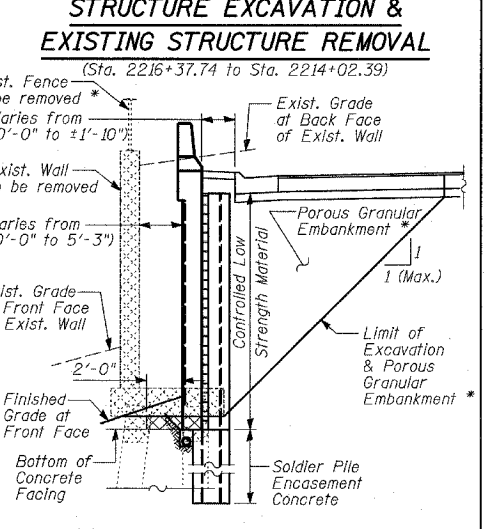
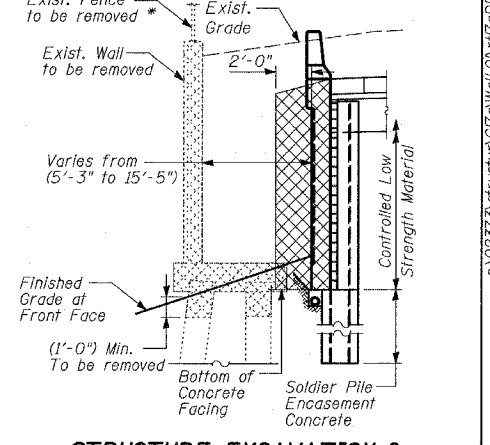
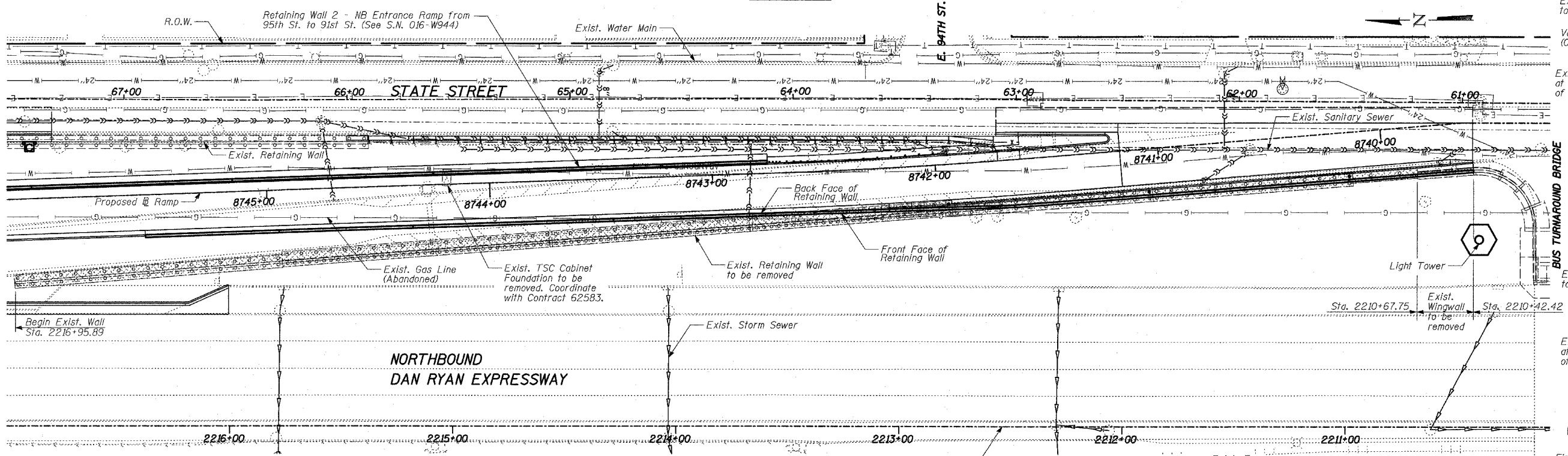
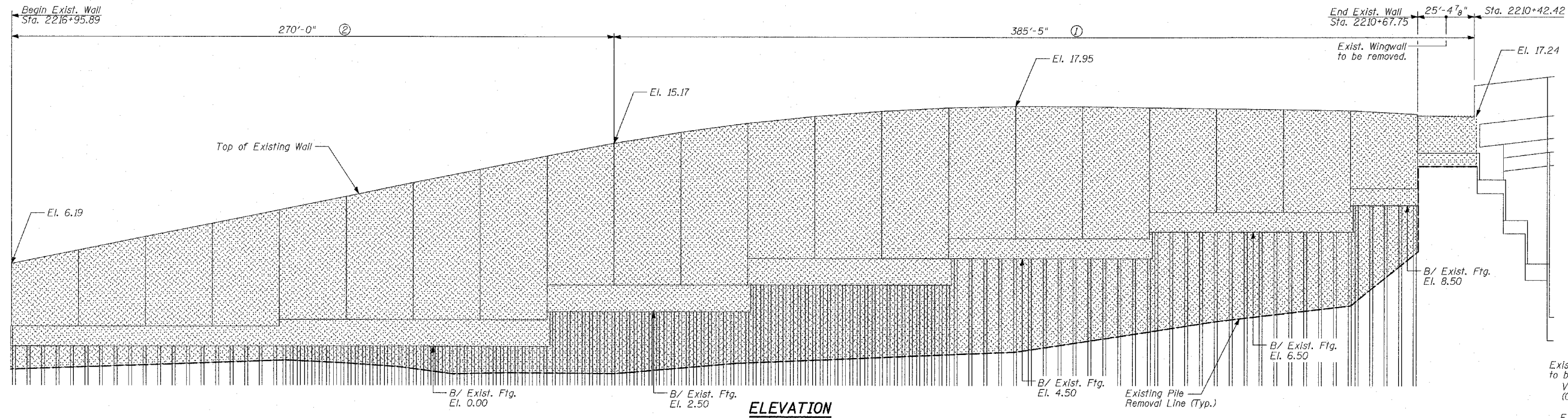


F.A.I. RTE. 94	SECTION	COUNTY COOK	TOTAL SHEETS 860	SHEET NO. 413
STA. 2200+00.00 TO STA. 2362+00.00		ILLINOIS FED. AID PROJECT		
FED. ROAD DIST. NO. (1516.1, 1717 & 1818) R-8		62694		



**LEGEND**

Removal of Existing Structure

Structure Excavation

**BILL OF MATERIAL**

ITEM	UNIT	TOTAL
Removal of Existing Structures No. 1	EACH	1
Pile Extraction	EACH	3

- NOTES:**
- For location of piles to be extracted, see Sheets 5 & 6 of 20.
  - For parts of existing wall interfering with the new wall, remove the wall and cut-off existing piles 1 foot (maximum) below the bottom of proposed wall concrete facing.
  - All existing piles are 16" concrete piles.
  - During removal of the existing retaining wall and piles, soil disturbance shall be kept at a minimum, and coordinated and approved by the Engineer.
  - All backfilling material placed after wall removal shall be Porous Granular Embankment. Cost of Porous Granular Embankment shall be included with Removal of Existing Structures.

- GENERAL NOTES:**
- Reinforcement bars shall conform to the requirements of AASHTO M31 or M322 Grade 60.
  - Plan dimensions and details relative to the existing structure have been taken from existing plans and are subject to nominal construction variations. It shall be the Contractor's responsibility to verify such dimensions and details in the field and make necessary approved adjustments prior to construction or ordering of materials. Such variations shall not be cause for additional compensation for a change in the scope of the work. However, the Contractor will be paid for the quantity actually finished at the unit price bid for the work.
  - The Contractor is responsible for the design and performance of the lagging using no less than 3" nominal rough-sawn thickness and the minimum tabulated unit stress in bending ( $F_b$ ), used in the design of the timber lagging shall be 1000 psi.
  - The soldier piles shall be cleaned and given one shop coat of Inorganic Zinc-Rich primer.
  - All exposed concrete edges shall be chamfered 3/4" except as noted.
  - Protective Coat shall be applied to exposed surfaces of the concrete facing.
  - The wall shall be backfilled (where applicable) prior to placing the concrete facing.

- Existing utilities in conflict with soldier pile wall construction shall be abandoned or relocated according to directions given on the roadway plans.
  - All construction joints shall be bonded.
  - All elevations shown are based on the Chicago City Datum of 0.00, which is 579.19 feet above mean tide New York. (NAVD 88)
  - The Contractor is responsible to coordinate all electrical crossings with this Contract and with Contract 62583.
- REMOVAL OF EXISTING STRUCTURE**  
(Sta. 2212+47.99 to Sta. 2210+42.42)
- Exist. Fence to be removed
- Top of Existing Wall (Elev. varies)
- Existing Wall
- 1 (Max.)
- Existing Pile removal line (Elev. varies) See Note 2
- \*Cost included with "Removal of Existing Structures No.1"

**REVISIONS**

NAME	DATE

ILLINOIS DEPARTMENT OF TRANSPORTATION  
**F.A.I. 94 (DAN RYAN EXPRESSWAY)**  
**RETAINING WALL ALONG STATE ST.**  
**ENTRANCE RAMP AT 95TH ST.**  
**WALL 1 - REMOVAL PLAN AND DETAILS**  
**STA. 2216+95.89 TO STA. 2210+42.42**  
 S.N. 016-W943  
 SCALE: N.T.S.  
 DATE: MARCH 18, 2005

DESIGNED BY: MI, DJR  
 DRAWN BY: DJR  
 CHECKED BY: TD, MI

SHEET 2 OF 20

**TYLIN INTERNATIONAL**