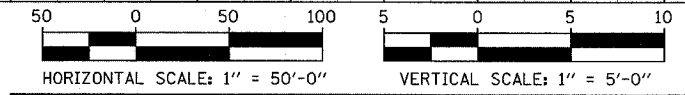
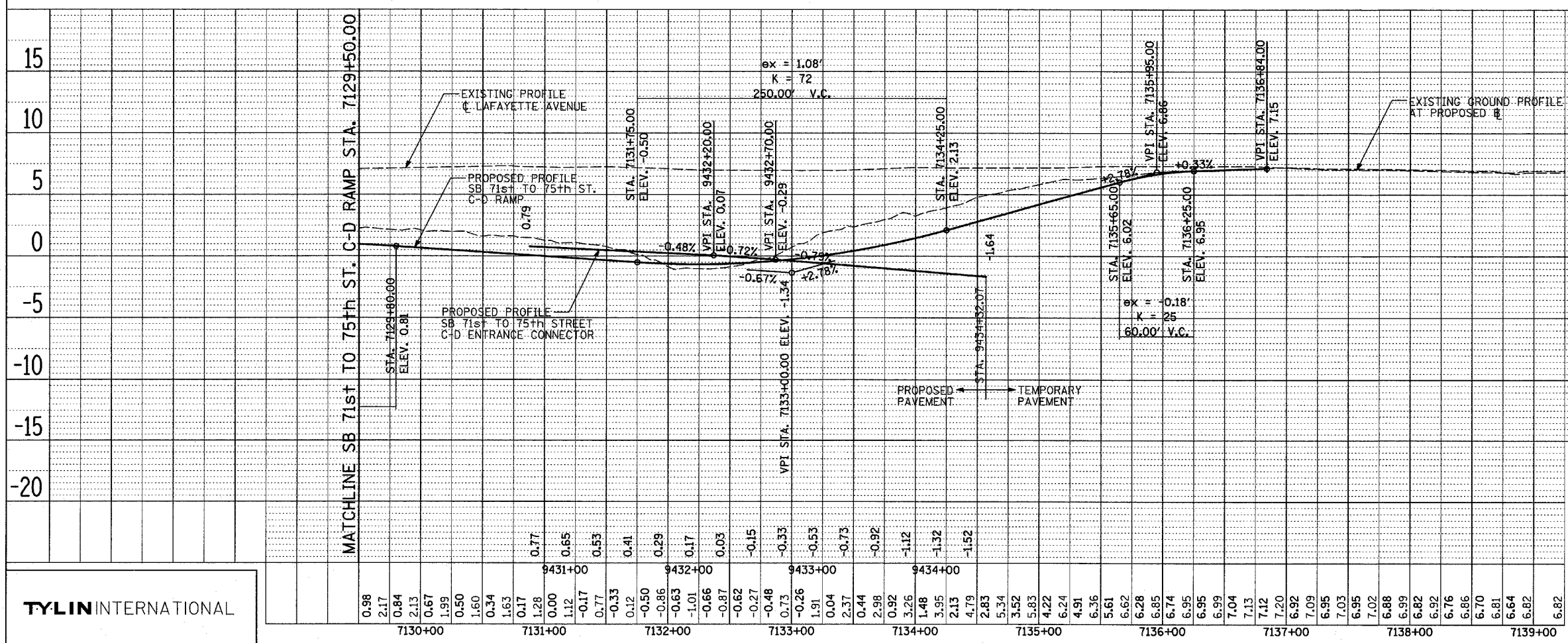
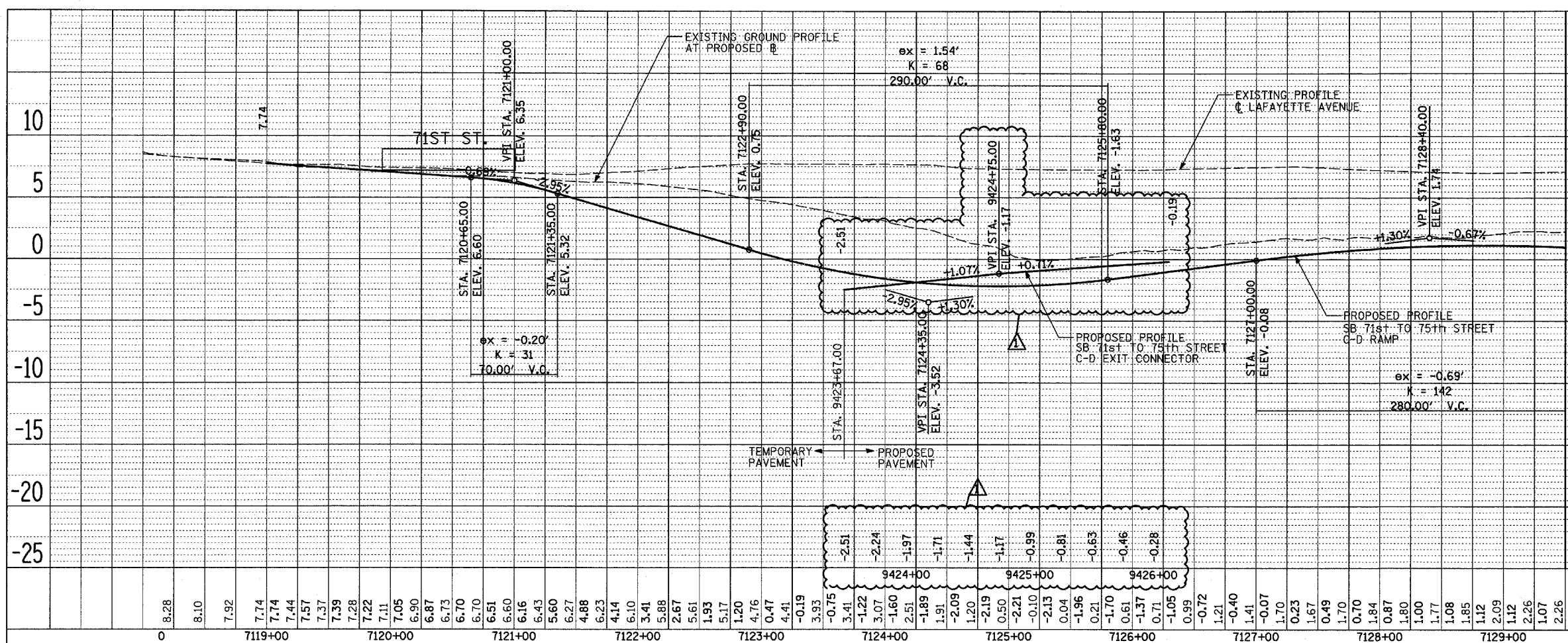


F.A.I. RTE.	SECTION	COUNTY	TOTAL SHEETS	SHEET NO.
94		COOK	907	103
STA. 1200+00.00 TO STA. 1365+00				
FED. ROAD DIST. NO.		ILLINOIS	FED. AID PROJECT	
* (1516, 1717 & 1818) E-9		62695		



REVISIONS	
NAME	DATE

ILLINOIS DEPARTMENT OF TRANSPORTATION  
F.A.I. 94 (DAN RYAN EXPRESSWAY)

EXISTING AND PROPOSED PROFILE  
SB 71st TO 75th STREET C-D RAMP

SCALE: 1"=50' HORIZ.  
1"=5' VERT.

DATE: MARCH 25, 2005

DRAWN BY: JPM  
CHECKED BY: MPG

TYLIN INTERNATIONAL

PLAN NO. \_\_\_\_\_

DATE \_\_\_\_\_

BY \_\_\_\_\_

REVISIONS: PLOTTED, ALIGNED, CHECKED, CADD FILE NAME

PLAN NO. \_\_\_\_\_

DATE \_\_\_\_\_

BY \_\_\_\_\_

REVISIONS: PLOTTED, ALIGNED, CHECKED, CADD FILE NAME

ADDENDUM 1 05/27/05