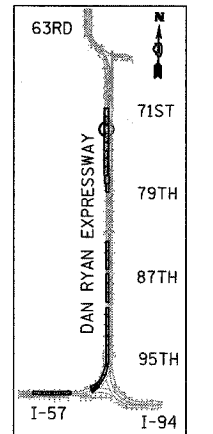
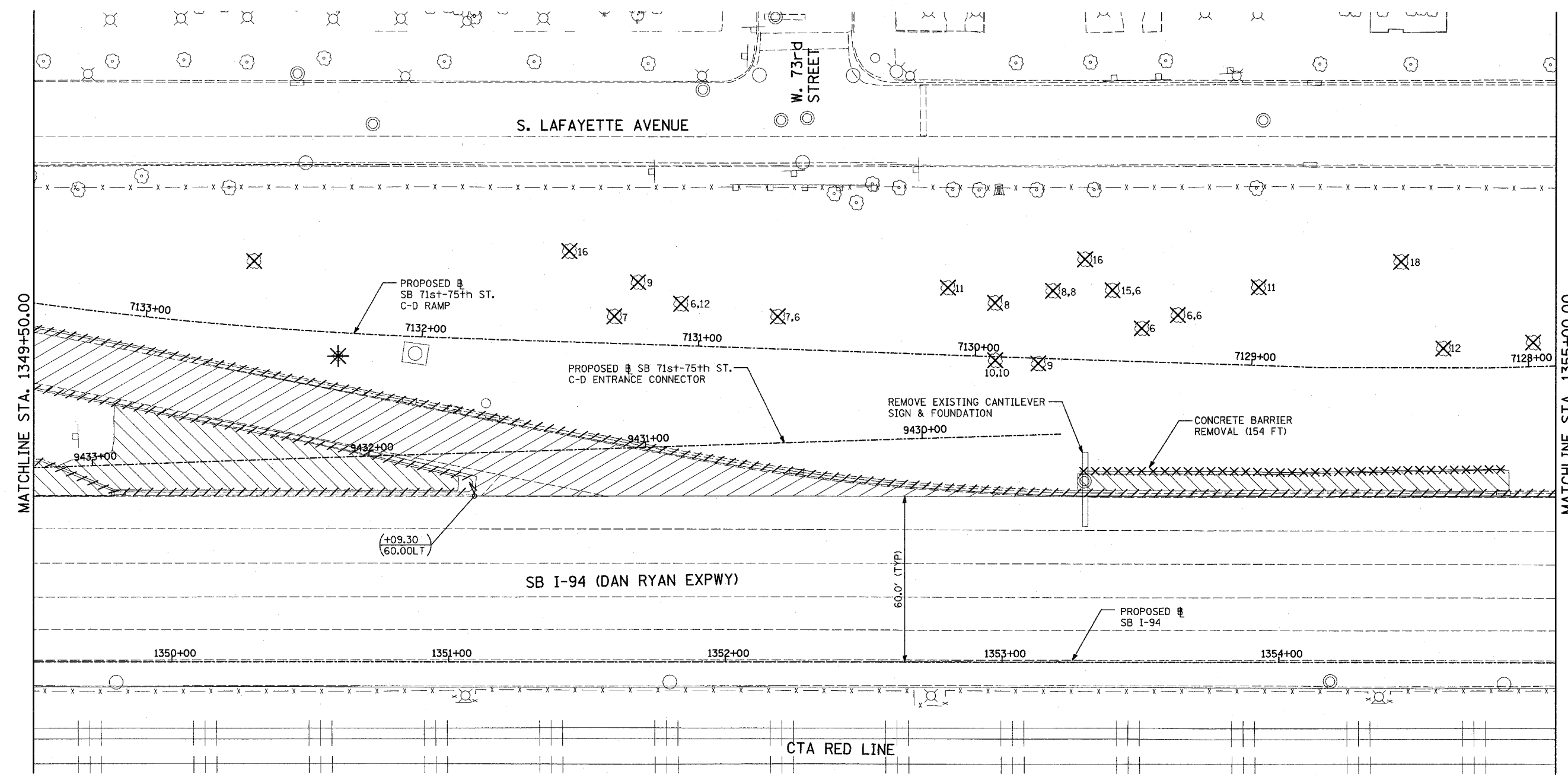
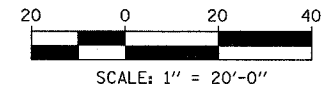


F.A.I. RTE.	SECTION	COUNTY	TOTAL SHEETS	SHEET NO.
94		COOK	907	90
STA. 1200+00.00		TO STA. 1365+00		
FED. ROAD DIST. NO.	ILLINOIS	FED. AID PROJECT		
* (1516.1, 1717 & 1818) R-9		62695		



LOCATION MAP



LEGEND:

- PAVEMENT REMOVAL
- PAVED SHOULDER REMOVAL
- PAVEMENT/SHOULDER REMOVAL, SPECIAL
- COMB CONC CURB & GUTTER REMOVAL
- CHAIN LINK FENCE REMOVAL
- CONCRETE BARRIER/GUARDRAIL REMOVAL
- TREE REMOVAL (UNITS) (NO UNIT SHOWN = <6)
- SOIL BORING LOCATIONS
- LIGHT POLE FOUNDATION REMOVAL (SEE EXISTING ELECTRICAL PLANS)

- (+XX.XX)** MAINLINE # STATION/OFFSET
- (XX.XXRT)** STATION/OFFSET
- +XX.XX** RAMP #
- XX.XXRT** STATION/OFFSET

- NOTES:**
- ALL STATION/OFFSET/RADIUS CALLOUTS MEASURED TO EDGE OF PAVEMENT UNLESS OTHERWISE NOTED.
 - EXACT LOCATIONS OF EXISTING PIERS/ABUTMENTS TO BE FIELD VERIFIED

REVISIONS	
NAME	DATE

ILLINOIS DEPARTMENT OF TRANSPORTATION
F.A.I. 94 (DAN RYAN EXPRESSWAY)
EXISTING PLAN
SB 71st TO 75th STREET C-D RAMP
SB I-94 STA. 1349+50.00 TO 1355+00.00

SCALE: 1"=20'
DATE: MARCH 25, 2005

DRAWN BY: MPG
CHECKED BY: CL

TYLIN INTERNATIONAL

03/30/2005 1:26:45 AM