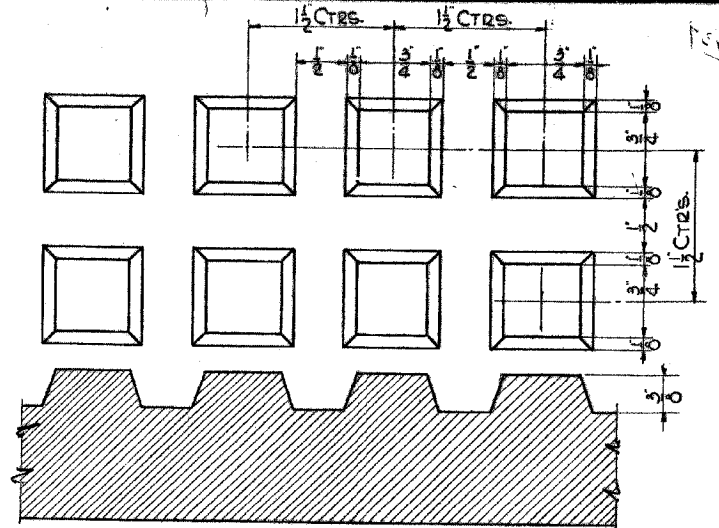
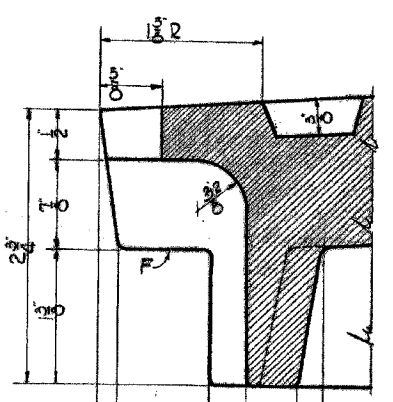


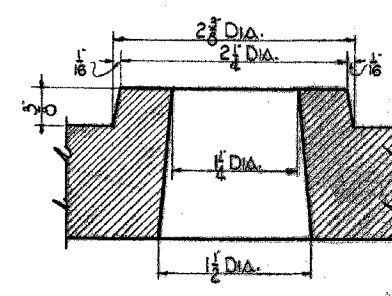
PLAN



DETAIL OF CORRUGATIONS

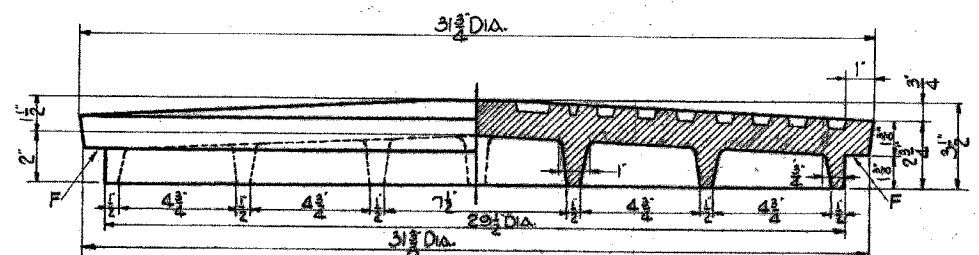


SECTION B-B



SECTION C-C

MATERIAL - CAST IRON
 ESTIMATED WEIGHT 315 LB. F-DENOTES BEARING SURFACE SHALL BE MACHINED SMOOTH.



HALF ELEVATION HALF SECTION A-A

SUPERSEDES DRG. 7223-DATED 6-29-10
 COMMODITY CODE 02-4374-0630

C	WEIGHT REVISED
B	WEIGHT REVISED
A	IDENTIFICATION LETTERS ON COVER CHANGED
30" CIRCULAR STREET MANHOLE COVER	
REVISED	CITY OF CHICAGO
A 12-7-53	DEPT. OF STREETS AND SANITATION
B 9-7-79	DIVISION OF ELECTRICAL ENGINEERING
C 8-9-85	N. ZOLESKI
D	<i>[Signature]</i>
E	<i>[Signature]</i>
F	<i>[Signature]</i>
G	<i>[Signature]</i>
H	16x21
I	10927
J	4-8-84

REVISIONS		ILLINOIS DEPARTMENT OF TRANSPORTATION F.A.I. 94 (DAN RYAN EXPRESSWAY)
NAME	DATE	
		CITY OF CHICAGO BUREAU OF ELECTRICITY STANDARDS
REVISED	04/15/05	SCALE: DATE: MARCH 25, 2005
		DRAWN BY: REW CHECKED BY: WHI

FILE: L:\16398\02\Cad\Sheet\Revision\17B\04-15-05\6539202_510.dwg Rev: 04/15/05