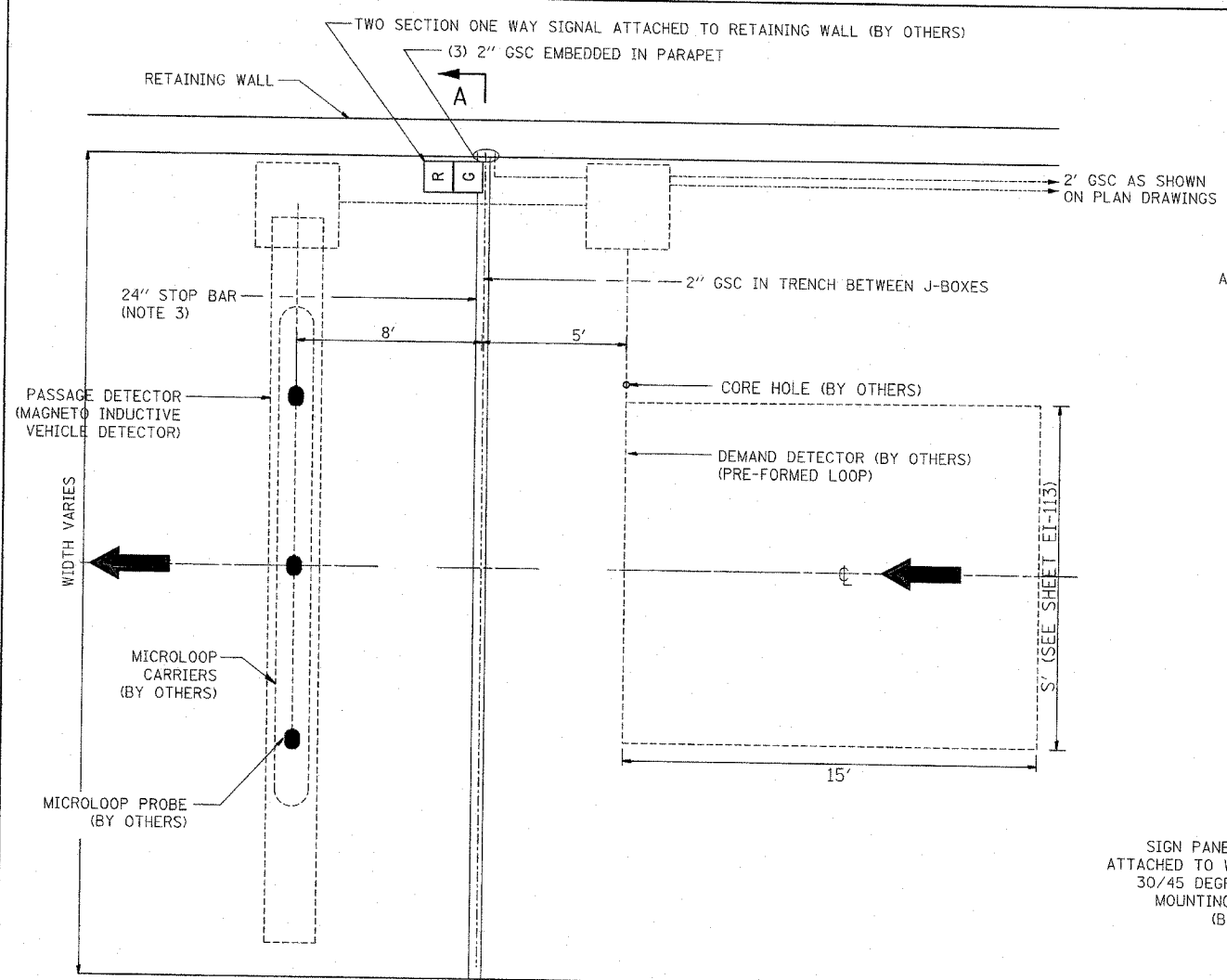
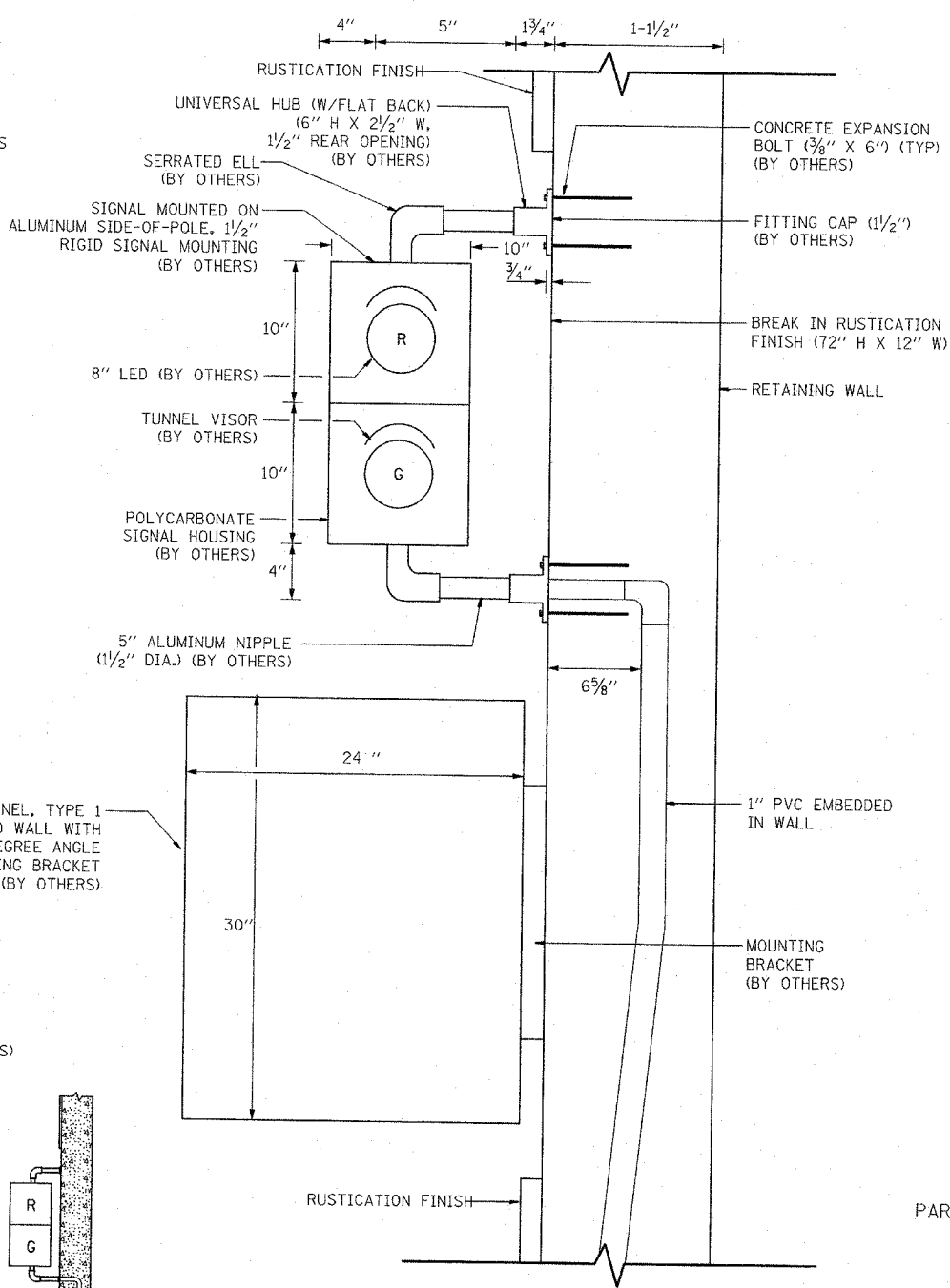


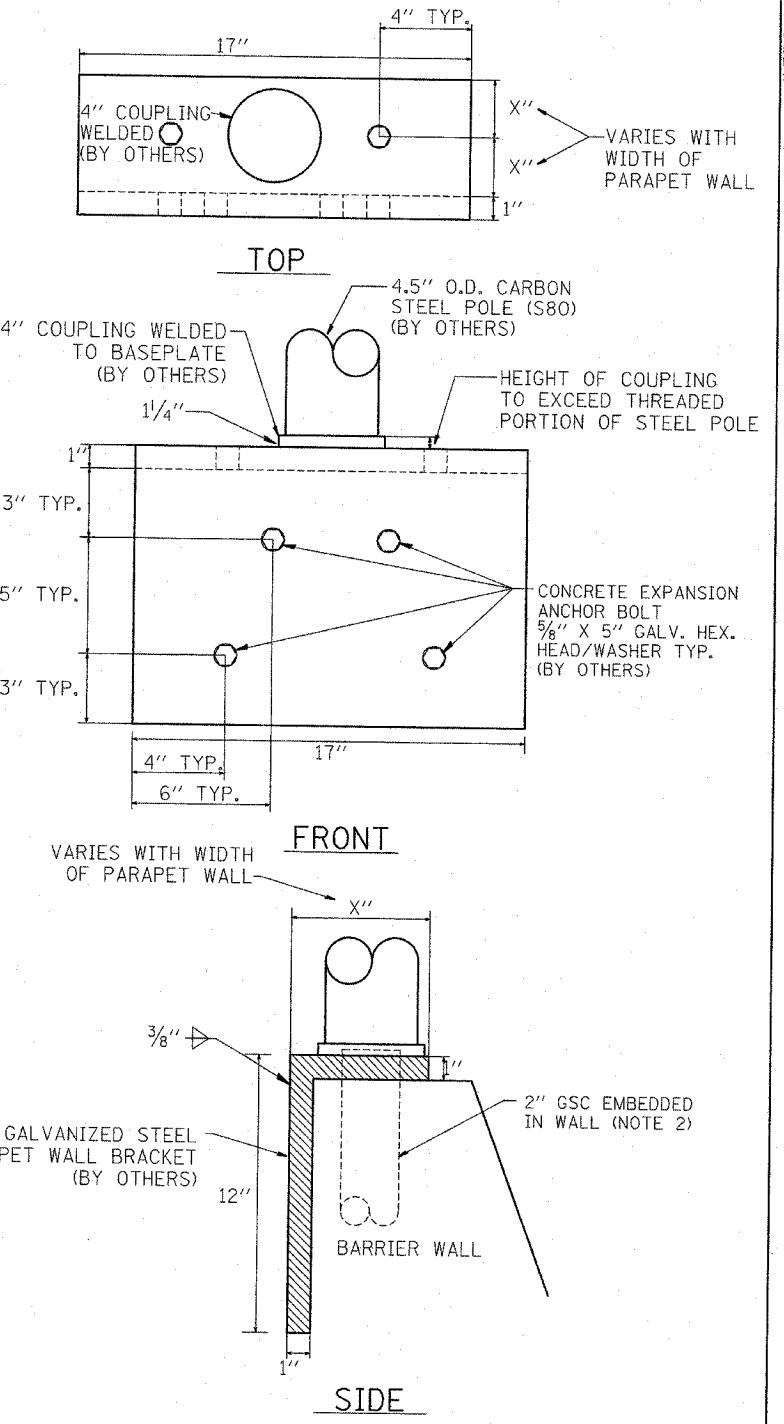
F.A.I. RTE.	SECTION	COUNTY	TOTAL SHEETS	SHEET NO.
94		COOK	907	421
STA.	TO STA.			
FED. ROAD DIST. NO. 1 ILLINOIS FED. AID PROJECT				
• (1516, 1, 1717 & 1818) R-8				



TYPICAL DETECTION LAYOUT

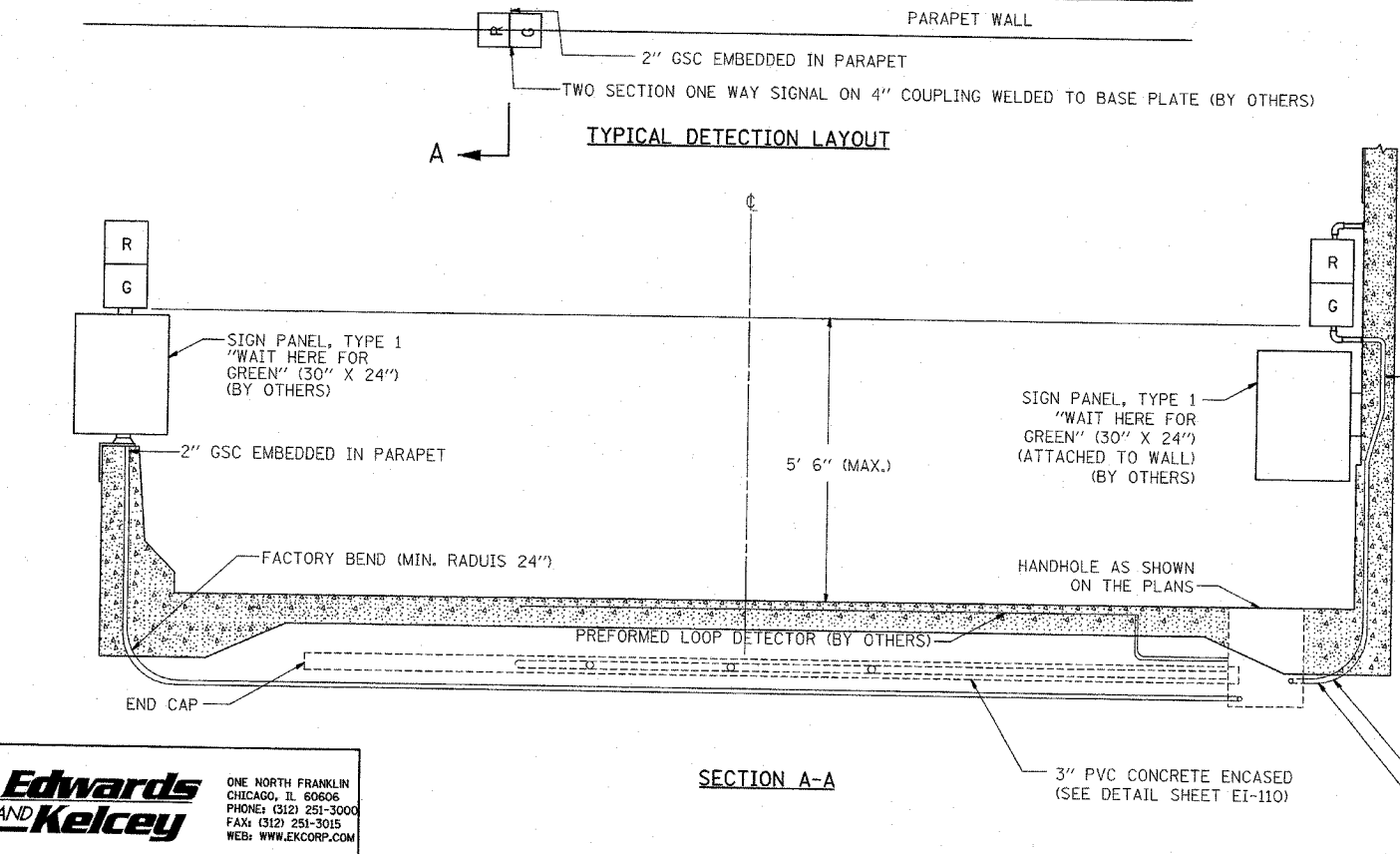


SIGNAL & SIGN ATTACHED TO RETAINING WALL



SIGNAL MOUNTED ON PARAPET WALL

- NOTES:
1. CONDUIT AND HANDHOLE MUST BE FURNISHED AND INSTALLED UNDER THIS CONTRACT. ALL CABLES, PROBES, SIGNALS, SIGNS, AND OTHER EQUIPMENT WILL BE FURNISHED AND INSTALLED BY OTHERS UNDER CONTRACT NUMBER 62583.
 2. CONDUIT MUST BE STUBBED OUT OF CONCRETE A MINIMUM OF 3".
 3. CENTERLINE OF STOP BAR AND TRAFFIC SIGNALS SHALL BE LOCATED AT THE STATION SHOWN ON THE PLANS.



SECTION A-A

17B/EI-114

REVISIONS	
NAME	DATE
REVISED	4/15/05

ILLINOIS DEPARTMENT OF TRANSPORTATION
F.A.I. 90/94 (DAN RYAN EXPRESSWAY)

TYPICAL RAMP METERING
BARRIER WALL AND
RETAINING WALL INSTALLATION

SCALE: NTS
DATE: MARCH 25, 2005
DRAWN BY: NB
CHECKED BY: CTC

Edwards AND Kelcey
ONE NORTH FRANKLIN
CHICAGO, IL 60606
PHONE: (312) 251-3000
FAX: (312) 251-3015
WEB: WWW.EKCORP.COM

4/12/2005 3:40:56 PM