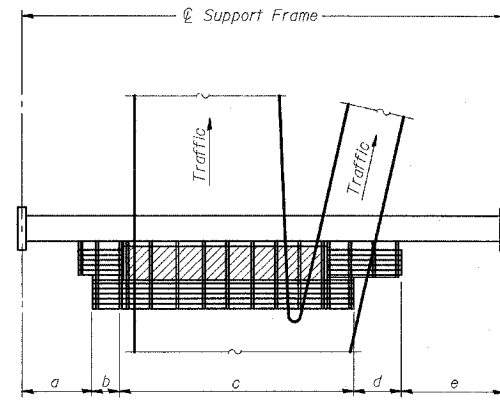
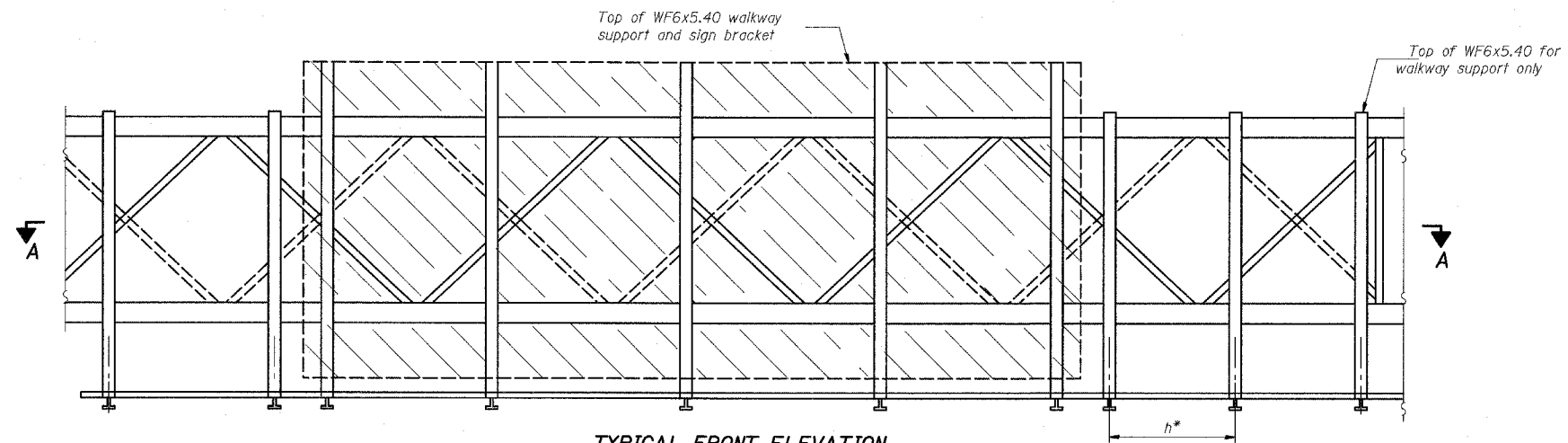


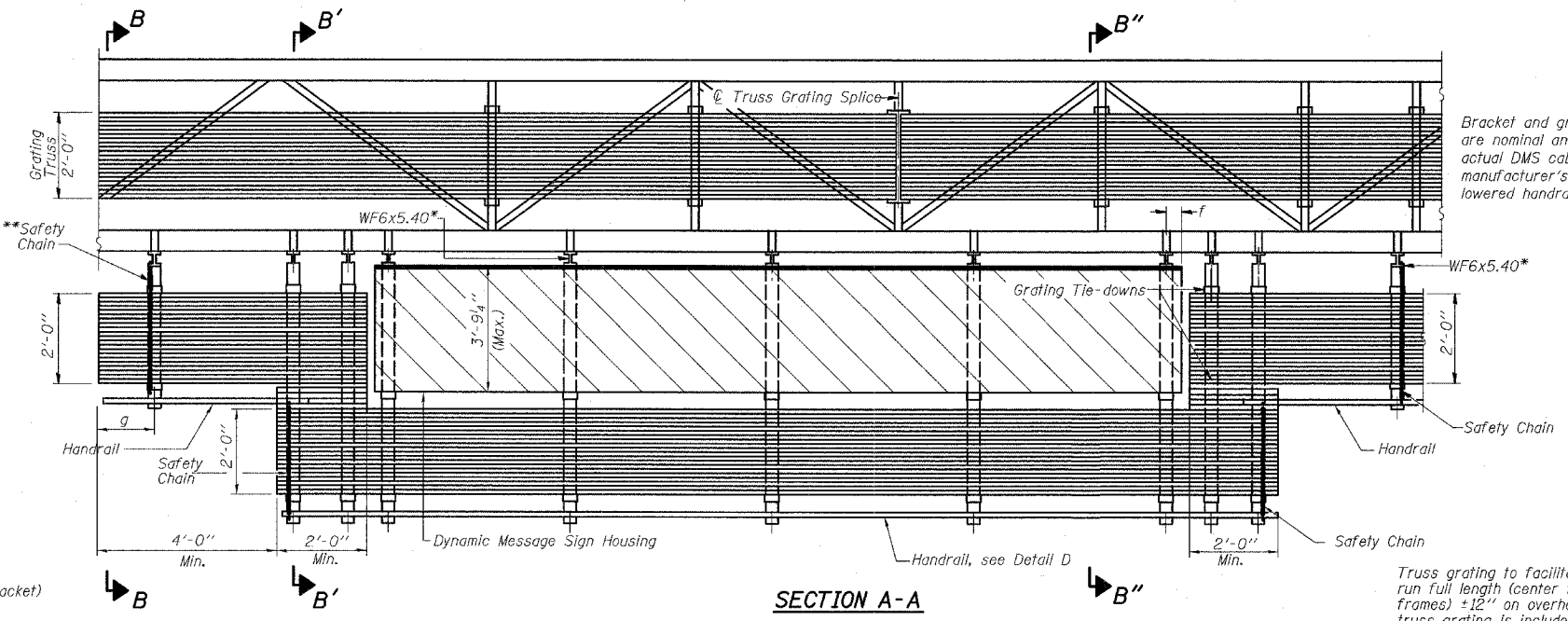
STATE OF ILLINOIS  
DEPARTMENT OF TRANSPORTATION



**PLAN**  
**WALKWAY AND HANDRAIL SKETCH**  
(Road plan beneath truss varies)



**TYPICAL FRONT ELEVATION**  
With handrail omitted for clarity.  
For Section B-B, see Base Sheet OS-A-10-DMS2  
For Section B'-B', and B''-B'', see Base Sheet OS-A-10a-DMS2



**SECTION A-A**

Walkway and Truss Grating width dimensions are nominal and may vary  $\pm 1/2$ " based on available standard widths.

Bracket and grating dimensions are nominal and will vary based on actual DMS cabinet dimensions plus manufacturer's mounting devices, lowered handrail and DMS cabinet.

Truss grating to facilitate inspection shall run full length (center to center of support frames)  $\pm 12$ " on overhead trusses. Cost of truss grating is included in "Overhead Sign Structure".

**BRACKET TABLE**

WF6x5.40 ASTM B308, Alloy 6061-T6		
Sign Width		Number Brackets Required
Greater Than	Less Than or Equal To	
	10'-0"	2
10'-0"	16'-0"	3
16'-0"	22'-0"	4
22'-0"	28'-0"	5
28'-0"	34'-0"	6

Notes: \*Space WF6x5.40 brackets for efficiency and within limits shown:

- f = 12" maximum, 4" minimum (End of sign to  $\mathcal{C}$  of nearest bracket)
- g = 12" maximum, 4" minimum (End of walkway grating to  $\mathcal{C}$  of nearest support bracket)
- h = 6'-0" maximum ( $\mathcal{C}$  to  $\mathcal{C}$  or walkway support brackets, WF6x5.40)

\*\*If walkway bracket at safety chain location is behind sign, add angle to bracket, see Alternate Safety Chain Attachment on Base Sheet OS-A-11-DMS2

For Details T and W, Section B-B and Grating Splice Details, see Base Sheet OS-A-10-DMS2.  
For Details D, F, G and P and Handrail Splice Details, see Base Sheet OS-A-11-DMS2.

Handrail and walkway shall span a minimum of three brackets between splices and/or gap joints.  
Place all sign and walkway brackets as close to panel points as practical.  
Grating and handrail splices placed as needed.

DESIGNED	
CHECKED	
DRAWN	
CHECKED	

EXAMINED	19
PASSED	

NUMBER	REVISION	DATE

Structure Number	Station	a	b	c	d	e	Walkway Grating and Handrail Lengths
ISO161094R061.3	1286+85	26.98'	2'	28.42'	14.79'	20.81'	64'

OS-A-9-DMS2 7/1/2001

TYLIN INTERNATIONAL

REVISIONS	
NAME	DATE

ILLINOIS DEPARTMENT OF TRANSPORTATION  
F.A.I. 94 (DAN RYAN EXPRESSWAY)  
  
OVERHEAD SIGN STRUCTURES  
ALTERNATE ALUMINUM WALKWAY DETAILS  
  
SCALE: AS NOTED  
DATE: MARCH 25, 2005  
DRAWN BY: AMB  
CHECKED BY: TB

3/30/2005 12:49:43 PM