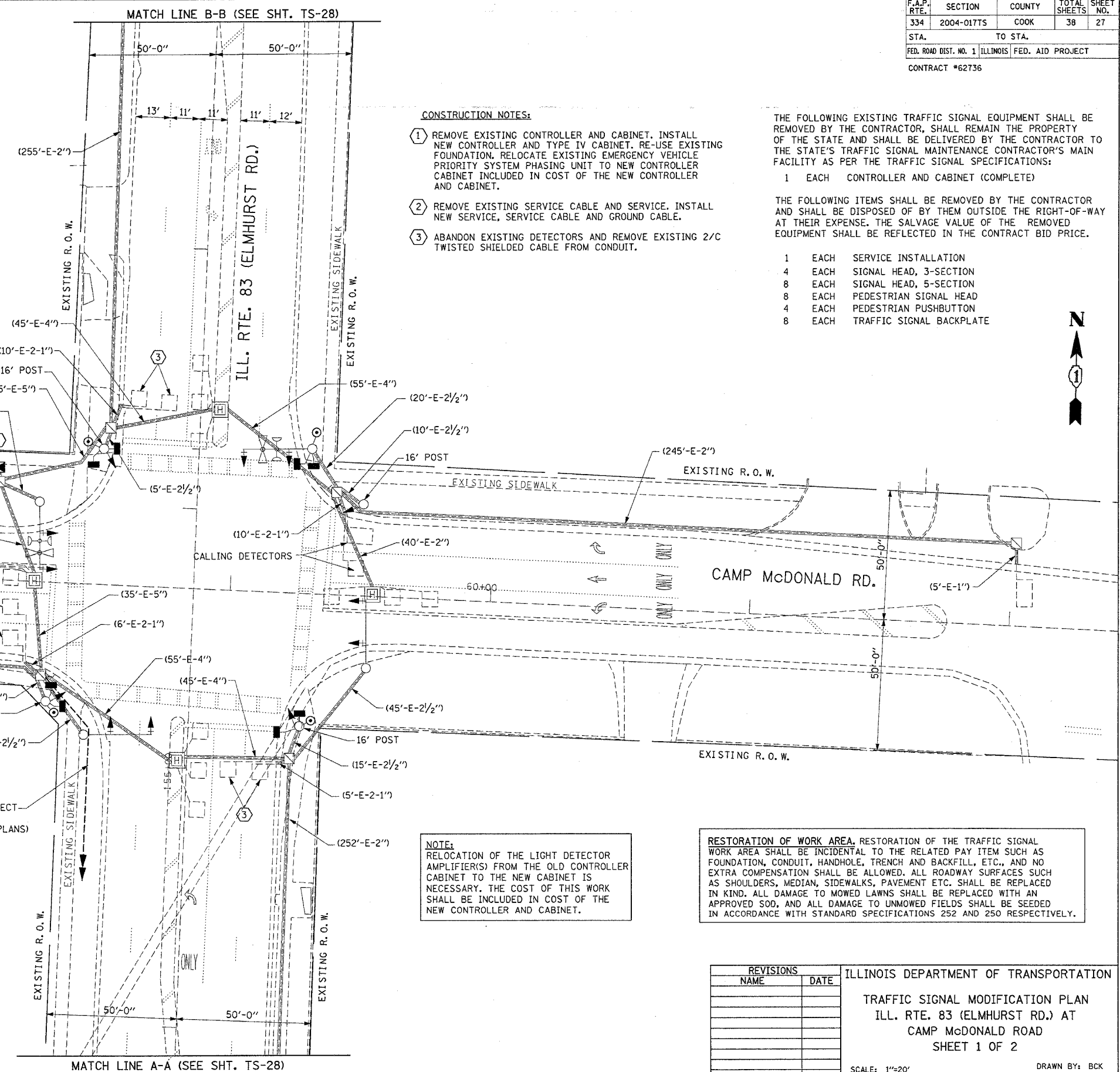


F.A.P. RTE. 1	SECTION	COUNTY	TOTAL SHEETS	SHEET NO.
334	2004-017TS	COOK	38	27
STA.		TO STA.		
FED. ROAD DIST. NO. 1 ILLINOIS FED. AID PROJECT				
CONTRACT #62736				

TRAFFIC SIGNAL LEGEND

PROPOSED	EXISTING
CONTROLLER	
SERVICE INSTALLATION	
SIGNAL HEAD	
SIGNAL HEAD WITH BACKPLATE	
SIGNAL HEAD, PEDESTRIAN	
SIGNAL POST	
MAST ARM ASSEMBLY AND POLE, STEEL	
MAST ARM ASSEMBLY AND POLE, ALUMINUM	
COMBINATION MAST ARM ASSEMBLY AND POLE, STEEL WITH LUMINAIRE	
UNIT DUCT	
COMMON TRENCH	
HANDHOLE	
HEAVY-DUTY HANDHOLE	
DOUBLE HANDHOLE	
G.S. CONDUIT IN TRENCH (T) OR PUSHED (P)	
PEDESTRIAN PUSHBUTTON DETECTOR	
DETECTOR LOOP	

CAST IRON JUNCTION BOX	
EMERGENCY VEHICLE LIGHT DETECTOR	
CONFIRMATION BEACON	
SIGNAL HEAD OPTICALLY PROGRAMMED	
CONDUIT SPLICE	
WOOD POLE	
RACEWAY FOR MAGNETIC DETECTOR, TYPE I OR TYPE II	
VEHICLE DETECTOR, NON COMPENSATED MAGNETIC TYPE	
RAILROAD CONTROL CABINET	
TELEPHONE CONNECTION	
ILLUMINATED SIGN "NO LEFT TURN"	
ILLUMINATED SIGN "NO RIGHT TURN"	

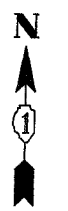


CONSTRUCTION NOTES:

- 1 REMOVE EXISTING CONTROLLER AND CABINET. INSTALL NEW CONTROLLER AND TYPE IV CABINET. RE-USE EXISTING FOUNDATION. RELOCATE EXISTING EMERGENCY VEHICLE PRIORITY SYSTEM PHASING UNIT TO NEW CONTROLLER CABINET INCLUDED IN COST OF THE NEW CONTROLLER AND CABINET.
- 2 REMOVE EXISTING SERVICE CABLE AND SERVICE, INSTALL NEW SERVICE, SERVICE CABLE AND GROUND CABLE.
- 3 ABANDON EXISTING DETECTORS AND REMOVE EXISTING 2/C TWISTED SHIELDED CABLE FROM CONDUIT.

THE FOLLOWING EXISTING TRAFFIC SIGNAL EQUIPMENT SHALL BE REMOVED BY THE CONTRACTOR, SHALL REMAIN THE PROPERTY OF THE STATE AND SHALL BE DELIVERED BY THE CONTRACTOR TO THE STATE'S TRAFFIC SIGNAL MAINTENANCE CONTRACTOR'S MAIN FACILITY AS PER THE TRAFFIC SIGNAL SPECIFICATIONS:

- | | | |
|---|------|-----------------------------------|
| 1 | EACH | CONTROLLER AND CABINET (COMPLETE) |
| THE FOLLOWING ITEMS SHALL BE REMOVED BY THE CONTRACTOR AND SHALL BE DISPOSED OF BY THEM OUTSIDE THE RIGHT-OF-WAY AT THEIR EXPENSE. THE SALVAGE VALUE OF THE REMOVED EQUIPMENT SHALL BE REFLECTED IN THE CONTRACT BID PRICE. | | |
| 1 | EACH | SERVICE INSTALLATION |
| 4 | EACH | SIGNAL HEAD, 3-SECTION |
| 8 | EACH | SIGNAL HEAD, 5-SECTION |
| 8 | EACH | PEDESTRIAN SIGNAL HEAD |
| 4 | EACH | PEDESTRIAN PUSHBUTTON |
| 8 | EACH | TRAFFIC SIGNAL BACKPLATE |



NOTE:
RELOCATION OF THE LIGHT DETECTOR AMPLIFIER(S) FROM THE OLD CONTROLLER CABINET TO THE NEW CABINET IS NECESSARY. THE COST OF THIS WORK SHALL BE INCLUDED IN COST OF THE NEW CONTROLLER AND CABINET.

RESTORATION OF WORK AREA. RESTORATION OF THE TRAFFIC SIGNAL WORK AREA SHALL BE INCIDENTAL TO THE RELATED PAY ITEM SUCH AS FOUNDATION, CONDUIT, HANDHOLE, TRENCH AND BACKFILL, ETC., AND NO EXTRA COMPENSATION SHALL BE ALLOWED. ALL ROADWAY SURFACES SUCH AS SHOULDERS, MEDIAN, SIDEWALKS, PAVEMENT ETC. SHALL BE REPLACED IN KIND. ALL DAMAGE TO MOWED LAWNS SHALL BE REPLACED WITH AN APPROVED SOD, AND ALL DAMAGE TO UNMOWED FIELDS SHALL BE SEEDED IN ACCORDANCE WITH STANDARD SPECIFICATIONS 252 AND 250 RESPECTIVELY.

REVISIONS	
NAME	DATE

ILLINOIS DEPARTMENT OF TRANSPORTATION
TRAFFIC SIGNAL MODIFICATION PLAN
 ILL. RTE. 83 (ELMHURST RD.) AT
 CAMP McDONALD ROAD
 SHEET 1 OF 2
 SCALE: 1"=20'
 DATE: JUNE 28, 2004
 DRAWN BY: BCK
 DESIGNED BY: SM
 CHECKED BY: DAD