

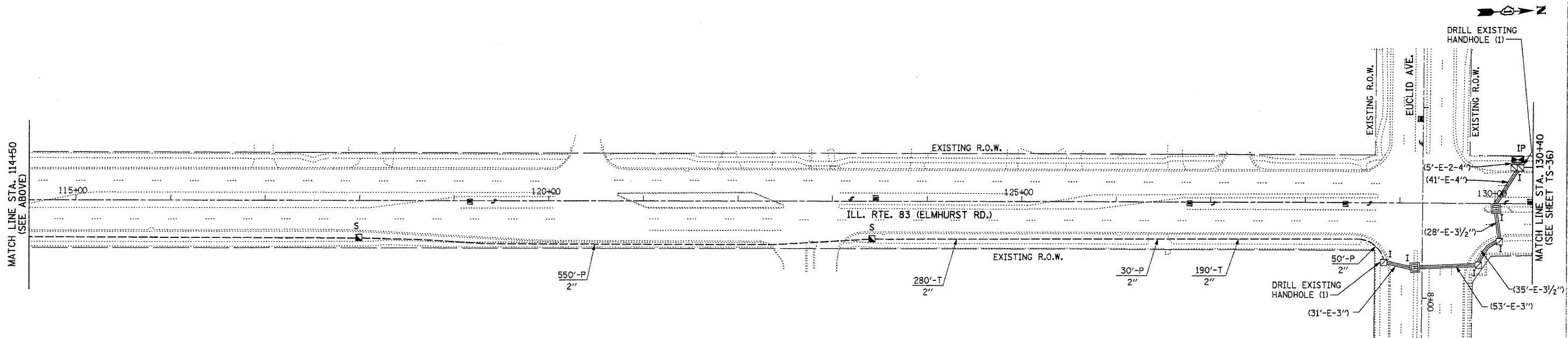
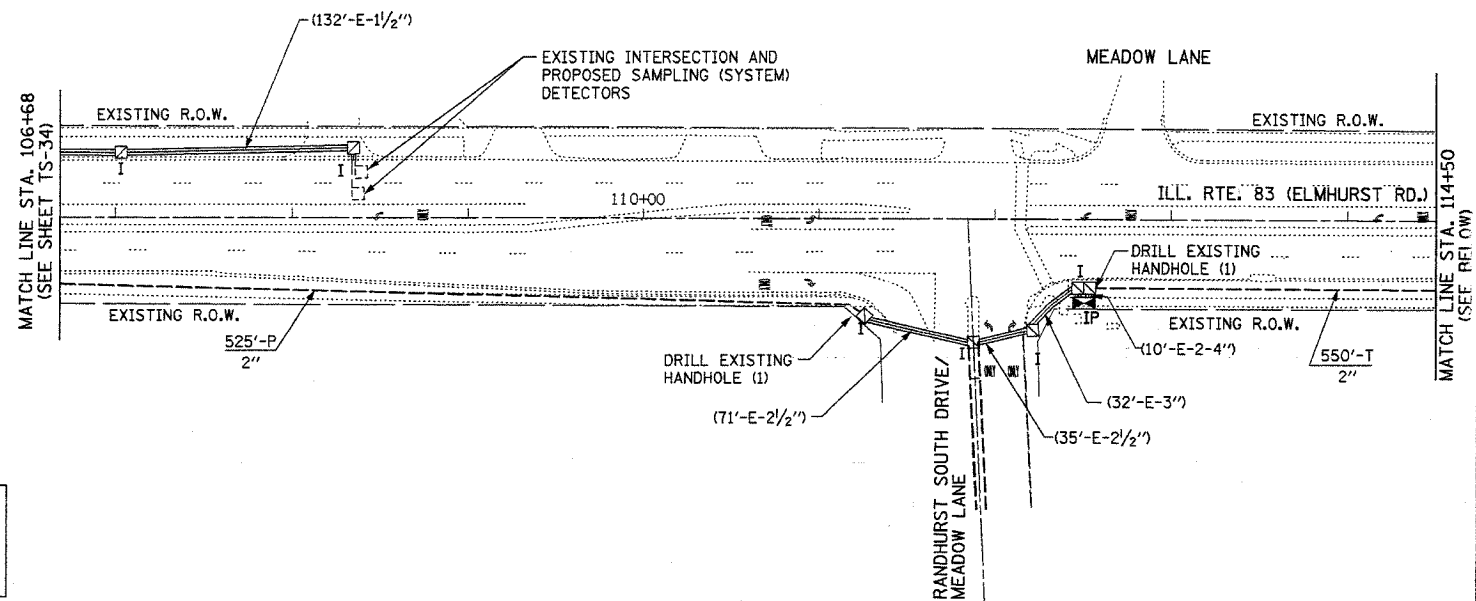
F.A.P. RTE.	SECTION	COUNTY	TOTAL SHEETS	SHEET NO.
334	2004-017TS	COOK	38	35
STA.		TO STA.		
FED. ROAD DIST. NO. 1		ILLINOIS FED. AID PROJECT		
CONTRACT #62736				

INTERCONNECT PLAN LEGEND

PROPOSED	EXISTING	
		CONTROLLER
		HANDHOLE
		DOUBLE HANDHOLE
		HEAVY-DUTY HANDHOLE
		G.S. CONDUIT IN TRENCH (T) OR PUSHED (P)
		DETECTOR LOOP
		COMMON TRENCH
		UNIT DUCT
		SYSTEM
		INTERSECTION

RESTORATION OF WORK AREA. RESTORATION OF THE TRAFFIC SIGNAL WORK AREA SHALL BE INCIDENTAL TO THE RELATED PAY ITEM SUCH AS FOUNDATION, CONDUIT, HANDHOLE, TRENCH AND BACKFILL, ETC., AND NO EXTRA COMPENSATION SHALL BE ALLOWED. ALL ROADWAY SURFACES SUCH AS SHOULDERS, MEDIAN, SIDEWALKS, PAVEMENT ETC. SHALL BE REPLACED IN KIND. ALL DAMAGE TO MOWED LAWNS SHALL BE REPLACED WITH AN APPROVED SOD, AND ALL DAMAGE TO UNMOWED FIELDS SHALL BE SEEDED IN ACCORDANCE WITH STANDARD SPECIFICATIONS 252 AND 250 RESPECTIVELY.

NOTE: SPECIAL CARE MUST BE TAKEN WHEN TRENCHING AND PUSHING CONDUIT, INSTALLING HANDHOLES, ETC. TO AVOID HITTING BURIED CABLES, UTILITIES, TREES, ORNAMENTAL PLANTS, ETC.



REVISIONS	
NAME	DATE

ILLINOIS DEPARTMENT OF TRANSPORTATION
 INTERCONNECT PLAN
 ILL. RTE. 83 (ELMHURST RD.)
 FROM U.S. RTE. 12 (RAND RD.)
 TO WILLOW RD.
 SHEET 1 OF 3
 SCALE: 1"=50'
 DATE: JUNE 15, 2004
 DRAWN BY: RV/MD
 DESIGNED BY: AZ
 CHECKED BY: AZ

K&E KAM ENGINEERING, INC.
 CONSULTING ENGINEERS
 707A Davis Road, Suite 205
 Elgin, Illinois 60123-1369

G:\projects\JOB 337\SHIT\Inter--L.sht
 06/09/2004