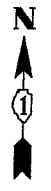


F.A.P. RTE.	SECTION	COUNTY	TOTAL SHEETS	SHEET NO.
334	2004-017TS	COOK	38	38
STA.		TO STA.		
FED. ROAD DIST. NO. 1		ILLINOIS	FED. AID PROJECT	
CONTRACT #62736				



INTERCONNECT SCHEMATIC LEGEND

EXISTING INTERSECTION CONTROLLER		PROPOSED SAMPLING (SYSTEM) PREFORMED DETECTORS	
PROPOSED INTERSECTION CONTROLLER		EXISTING FIBER OPTIC CABLE IN CONDUIT, NO. 62.5/125, MM12F SM12F	
EXISTING MASTER CONTROLLER		PROPOSED FIBER OPTIC CABLE IN CONDUIT, NO. 62.5/125, MM12F SM12F	
PROPOSED MASTER CONTROLLER		EXISTING INTERCONNECT CABLE- NO. 62.5/125 12F FIBER OPTIC CABLE	
MASTER MASTER CONTROLLER		PROPOSED INTERCONNECT CABLE- NO. 62.5/125 12F FIBER OPTIC CABLE	
EXISTING INTERSECTION AND SAMPLING (SYSTEM) DETECTORS		EXISTING INTERCONNECT CABLE - NO. 18 3 PAIR TWISTED, SHIELDED	
PROPOSED INTERSECTION AND SAMPLING (SYSTEM) DETECTORS		PROPOSED INTERCONNECT CABLE - NO. 18 3 PAIR TWISTED, SHIELDED	
EXISTING INTERSECTION LOOP DETECTORS		EXISTING LOOP DETECTOR CABLE - 2/C TWISTED, SHIELDED	
PROPOSED SAMPLING (SYSTEM) DETECTORS		PROPOSED LOOP DETECTOR CABLE - 2/C TWISTED, SHIELDED	
EXISTING SAMPLING (SYSTEM) DETECTORS		EXISTING ELECTRIC CABLE 1/C (AS SPECIFIED)	
PROPOSED INTERSECTION AND SAMPLING (SYSTEM) DETECTORS		PROPOSED ELECTRIC CABLE 1/C (AS SPECIFIED)	
EXISTING SAMPLING (SYSTEM) DETECTORS		EXISTING TELEPHONE CONNECTION	
EXISTING PREFORMED INTERSECTION & SAMPLING (SYSTEM) DETECTORS		PROPOSED TELEPHONE CONNECTION	
PROPOSED PREFORMED INTERSECTION & SAMPLING (SYSTEM) DETECTORS			
EXISTING SAMPLING (SYSTEM) PREFORMED DETECTORS			

SCHEDULE OF INTERCONNECT QUANTITIES

ITEM	UNIT	QNTY.
TRAFFIC CONTROL AND PROTECTION, STANDARD 701501	L SUM	0.12
TRAFFIC CONTROL AND PROTECTION, STANDARD 701606	L SUM	0.12
TRAFFIC CONTROL AND PROTECTION, STANDARD 701701	L SUM	0.12
TRAFFIC CONTROL AND PROTECTION, STANDARD 701801	L SUM	0.12
CONDUIT IN TRENCH, 2" DIA., GALVANIZED STEEL	FOOT	9107
CONDUIT PUSHED, 2" DIA., GALVANIZED STEEL	FOOT	3425
HANDHOLE	EACH	17
TRENCH AND BACKFILL FOR ELECTRICAL WORK	FOOT	9107
MASTER CONTROLLER (SPECIAL)	EACH	1
ELECTRIC CABLE IN CONDUIT, TRACER NO. 14 1C	FOOT	16154
FIBER OPTIC CABLE IN CONDUIT, NO. 62.5/125, MM12F SM12F	FOOT	16336
DRILL EXISTING HANDHOLE	EACH	13

REVISIONS	
NAME	DATE

ILLINOIS DEPARTMENT OF TRANSPORTATION
 INTERCONNECT SCHEMATIC
 U.S. ROUTE 12 (RAND RD.) FROM
 CAMP McDONALD RD. TO ILL. RTE. 83
 (ELMHURST RD.) AND ILL. RTE. 83
 (ELMHURST RD.) FROM U.S. RTE. 12
 (RAND RD.) TO WILLOW RD.
 SCALE: NONE
 DATE: JUNE 28, 2004
 DRAWN BY: BCK
 DESIGNED BY: SM
 CHECKED BY: DAD

FILE\$
 \$DATE\$
 6/26/2004
 c:\projects\traffic\013000\h83.m32
 kanthapixaybo

