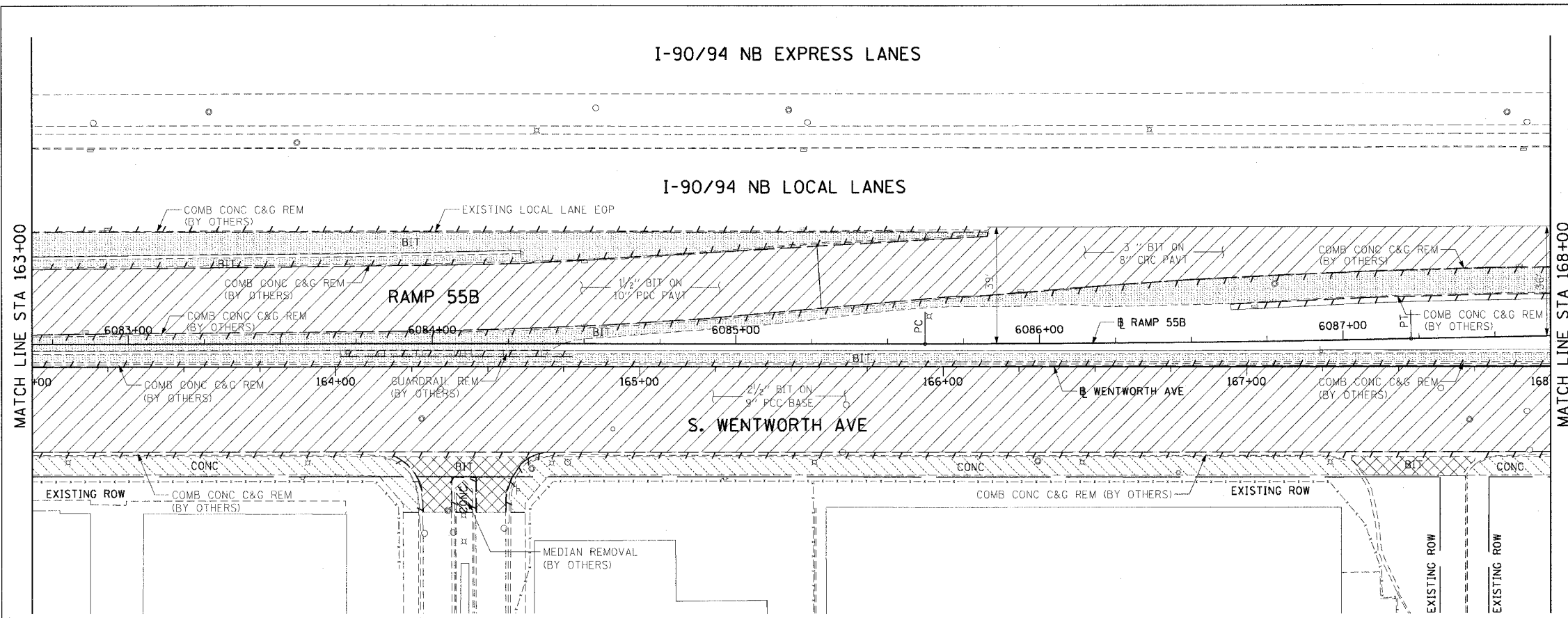


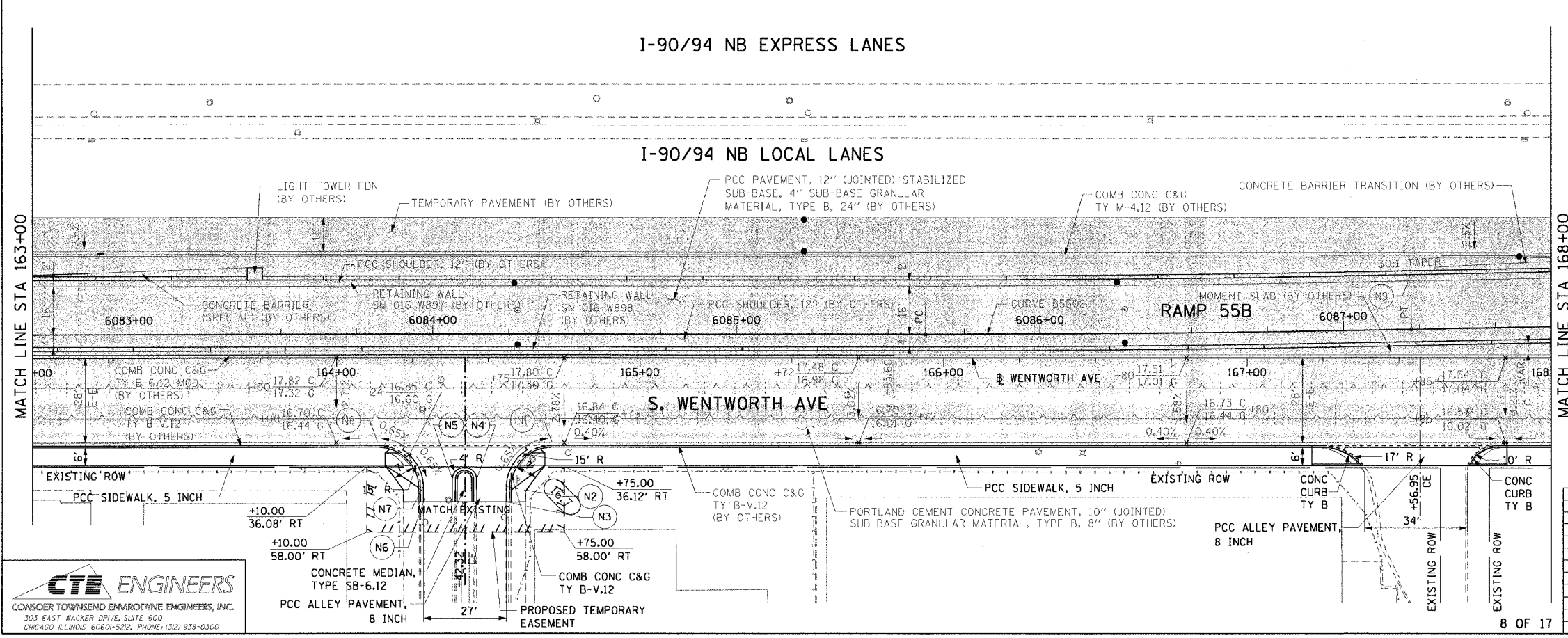
F.A.I. SECTION	COUNTY	TOTAL SHEETS	SHEET NO.
90/94 2004-0571	COOK	47	28
STA. 163+00 TO STA. 168+00			
FED. ROAD DIST. NO. 1 ILLINOIS FED. AID PROJECT			

62796



- LEGEND:
- PAVEMENT REMOVAL (BY OTHERS)
 - MEDIAN REMOVAL (BY OTHERS)
 - LINEAR REMOVALS (BY OTHERS)
 - SIDEWALK REMOVAL (BY OTHERS)
 - APPROACH SLAB REMOVAL (BY OTHERS)
 - DRIVEWAY PAVEMENT REMOVAL (BY OTHERS)
 - PAVED SHOULDER REMOVAL (BY OTHERS)
 - TREE REMOVAL (WITH SIZE) (BY OTHERS)

EXISTING CONDITIONS AND REMOVAL
PROPOSED IMPROVEMENTS



- LEGEND:
- WORK TO BE DONE BY OTHERS

- NOTES:
1. SEE CURB DETAIL ON SHEET 38.
 2. SEE SIDEWALK RAMP DETAIL ON SHEET 39.
 3. SEE SIDEWALK DETAIL ON SHEET 40.
 4. SEE ALLEY DETAIL ON SHEET 43.

PT.	STATION	OFFSET	PT.	STATION	OFFSET
N1	164+70.95	28.00' RT	N6	164+28.73	47.90' RT
N2	164+55.95	42.90' RT	N7	164+28.64	42.76' RT
N3	164+55.92	47.90' RT	N8	164+13.64	28.00' RT
N4	164+46.17	40.30' RT	N9	6087+00.17	19.22' LT
N5	164+38.15	40.30' RT			

REVISIONS	
NAME	DATE

ILLINOIS DEPARTMENT OF TRANSPORTATION
F.A.I. 90/94 (DAN RYAN EXPRESSWAY)
59th ST TO 47th ST (WENTWORTH AVE SIDEWALKS)

EXISTING AND PROPOSED ROADWAY PLANS
WENTWORTH AVENUE

SCALE: 1"=20'
DATE: MARCH 4, 2005

DRAWN BY: AMM/MRK
CHECKED BY: JAL

CTE ENGINEERS
CONSERVATIVE TOWNSEND ENVIRONMENTAL ENGINEERS, INC.
303 EAST WACKER DRIVE, SUITE 500
CHICAGO, ILLINOIS 60601-5212, PHONE: (312) 938-0300

m:\p40468\ch\114-ent\9004-0571\902\sta\roadway\plans\p40468\0828.dwg