

F.A.I. RTE.	SECTION	COUNTY	TOTAL SHEETS	SHEET NO.
90/94	2004-060PM	COOK	30	1

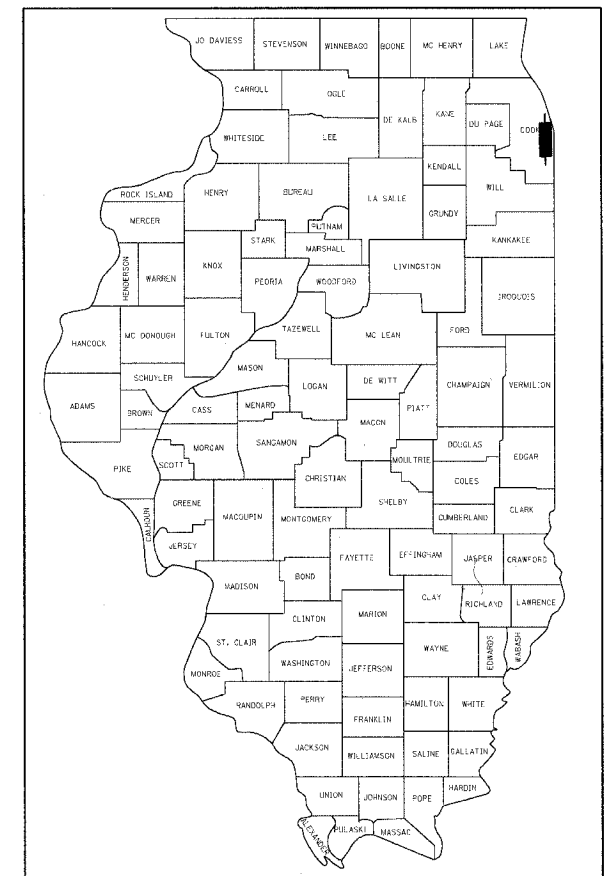
STATE OF ILLINOIS
DEPARTMENT OF TRANSPORTATION
DIVISION OF HIGHWAYS

PLANS FOR PROPOSED
FEDERAL AID HIGHWAY

F.A.I. ROUTE 90/94 (DAN RYAN EXPRESSWAY)
SECTION 2004-060PM

INSTALLATION OF PAVEMENT MARKINGS ON
WENTWORTH AVENUE AND WELLS STREET FROM
59TH STREET TO 47TH STREET
COOK COUNTY
C-91-284-04

D-91-419-01



LOCATION OF SECTION INDICATED THUS: —

INDEX OF SHEETS
FOR INDEX OF SHEETS, SEE SHEET NO. 2

IDOT HIGHWAY STANDARDS
FOR IDOT HIGHWAY STANDARDS,
SEE SHEET NO. 2

PROJECT LOCATED IN CITY OF CHICAGO

DESIGN DESIGNATION
WENTWORTH AVE: 6259 (20) URBAN COLLECTOR
WELLS ST: 8275 (20) URBAN COLLECTOR

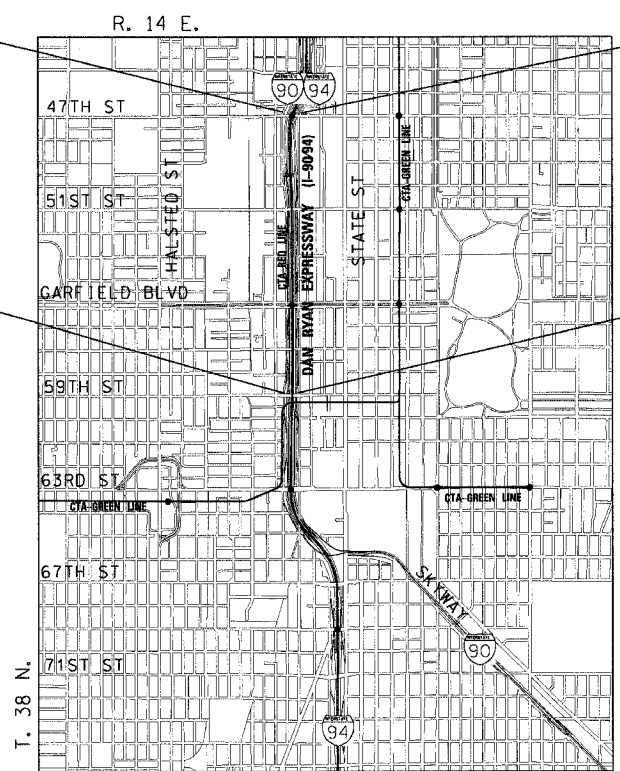
FRONTAGE ROADS:	ADT (2020)	DESIGN SPEED	POSTED SPEED
WENTWORTH AVE	11,000	30	25
WELLS ST	15,000	30	25

PROJECT ENDS S. WELLS ST STA 616 + 75.14

PROJECT ENDS S. WENTWORTH AVE STA 212 + 37.70

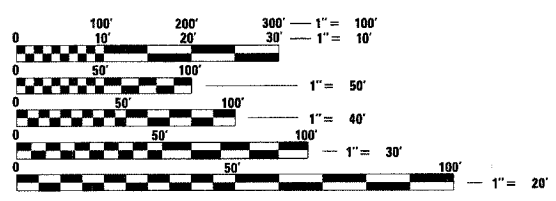
PROJECT BEGINS S. WELLS ST STA 534 + 86.88

PROJECT BEGINS S. WENTWORTH AVE STA 131 + 44.62



LOCATION MAP

GROSS LENGTH OF PROJECT = 16,281 FT (3.084 MILES)
NET LENGTH OF PROJECT = 16,281 FT (3.084 MILES)



FULL SIZE PLANS HAVE BEEN PREPARED USING STANDARD ENGINEERING SCALES. REDUCED SIZED PLANS WILL NOT CONFORM TO STANDARD SCALES. IN MAKING MEASUREMENTS ON REDUCED PLANS, THE ABOVE SCALES MAY BE USED.

DIGGER:
CHICAGO UTILITY ALERT NETWORK
(312) 744-7000

CONTRACT NO. 62799



John A. Lukowski
1/30/05 EXPIRES
3/4/06

STATE OF ILLINOIS
DEPARTMENT OF TRANSPORTATION
DIVISION OF HIGHWAYS

SUBMITTED March 10, 20 05
Devin O'Keefe, P.E.
DEPUTY DIRECTOR OF HIGHWAYS, REGION ENGINEER

May 13, 20 05
Mike Hene, P.E.
ENGINEER OF DESIGN AND ENVIRONMENT

May 13, 20 05
Victor Mader, P.E.
DIRECTOR OF HIGHWAYS, CHIEF ENGINEER

PRINTED BY THE AUTHORITY
OF THE STATE OF ILLINOIS

CTE ENGINEERS
CONSOER TOWNSEND ENVIROYDNE ENGINEERS, INC.
303 EAST WACKER DRIVE, SUITE 600
CHICAGO ILLINOIS 60601-5212, PHONE: (312) 938-0300

Rev. 5-26-05

DISTRICT ONE DESIGNCONSULTANT SERVICES PROJECT MANAGER
RAJENDRA SHAH (847) 705-4437