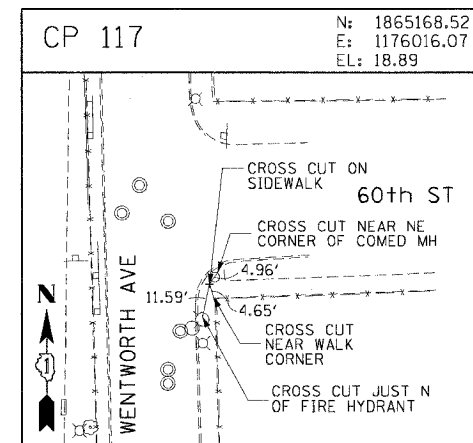
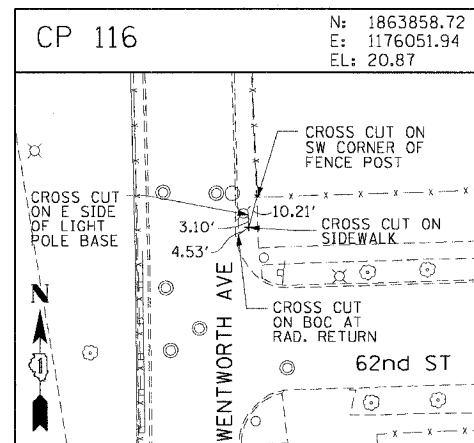
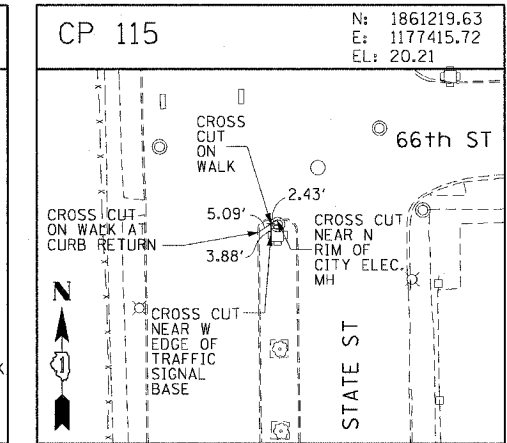
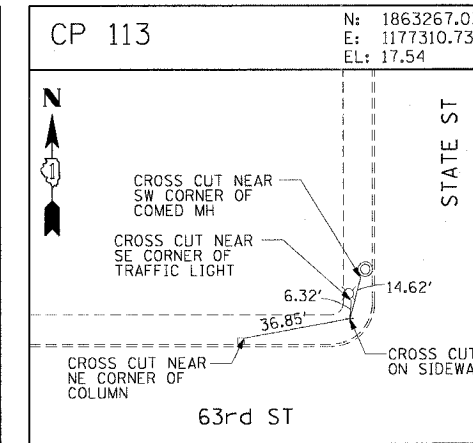
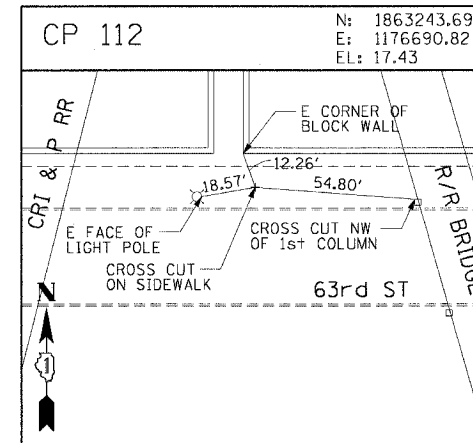
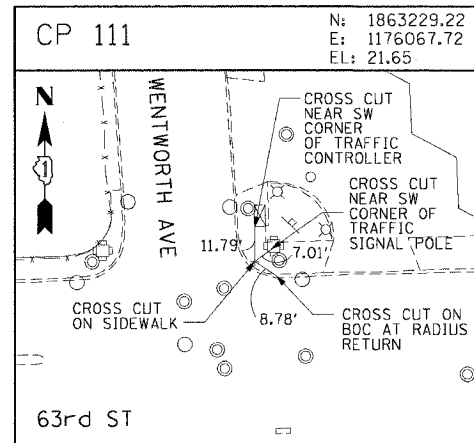
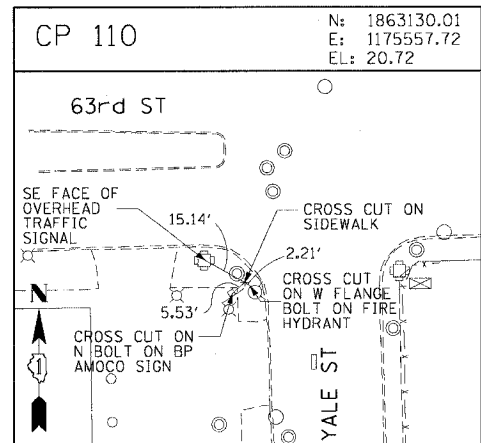
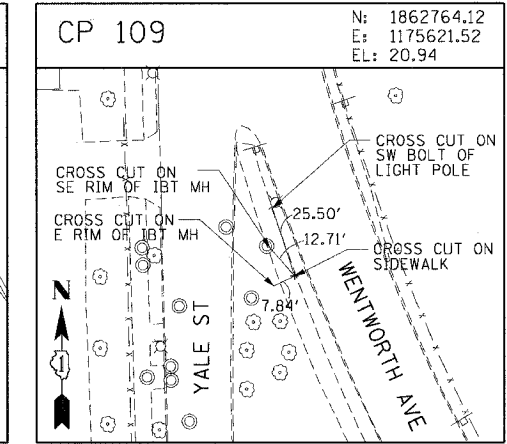
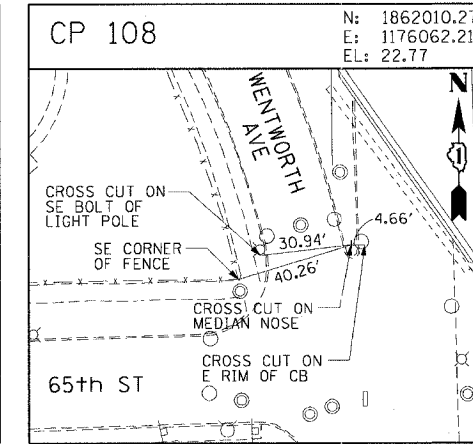
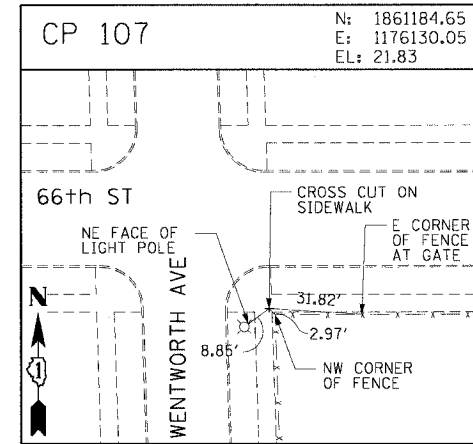
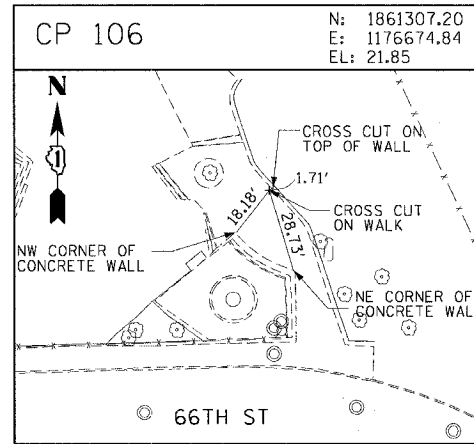
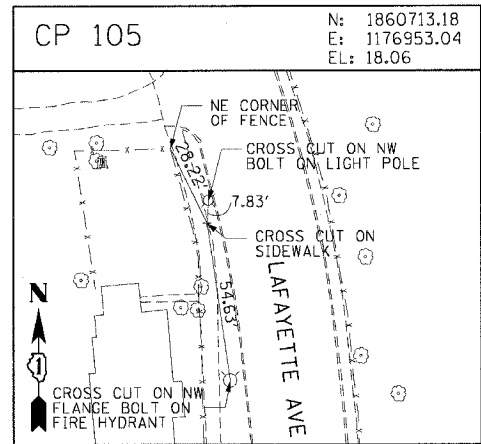
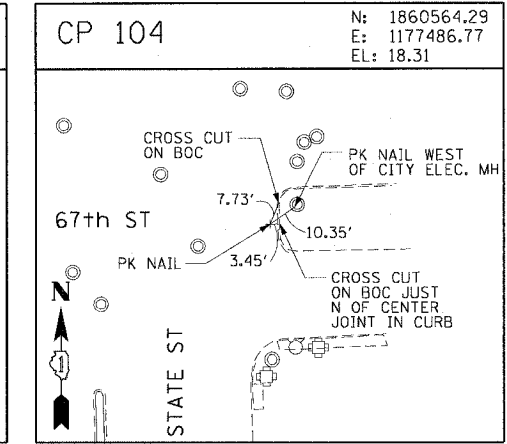
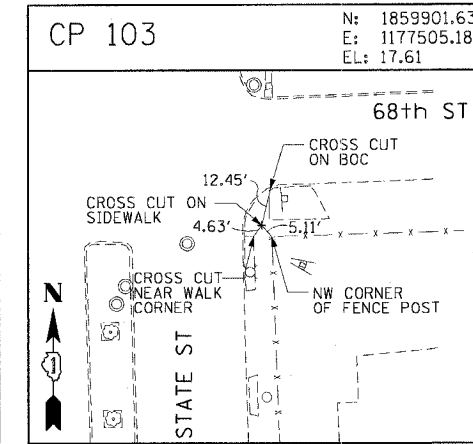
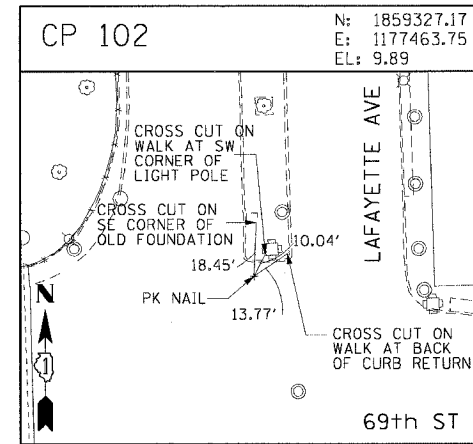
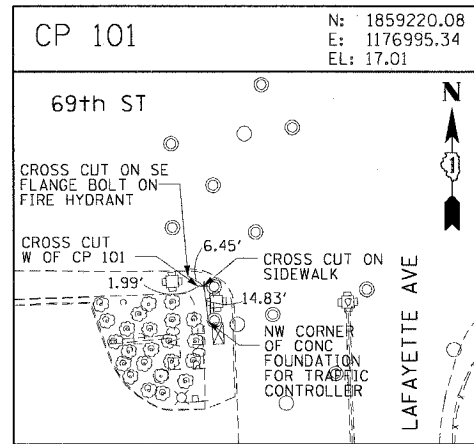
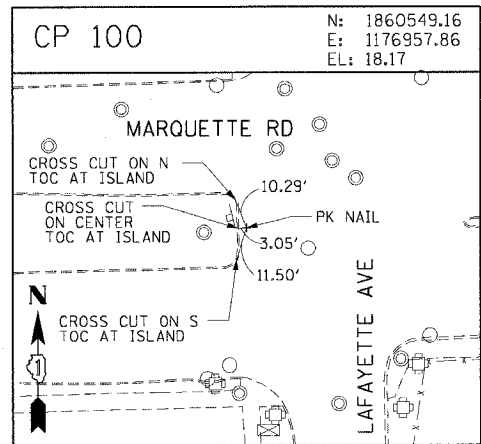


F.A.I. RT#:	SECTION	COUNTY	TOTAL SHEETS	SHEET NO.
90/94	2004-060PM	COOK	30	15
STA.	TO STA.			
FED. ROAD DIST. NO. 1		ILLINOIS	FED. AID PROJECT	
62799				



REVISIONS	
NAME	DATE

ILLINOIS DEPARTMENT OF TRANSPORTATION
 F.A.I. 90/94 (DAN RYAN EXPRESSWAY)
 59th ST TO 47th ST (FRONTAGE RD AND RAMPS)
 SURVEY TIES AND CONTROL POINTS

SCALE: 1"=30'
 DATE: March 4, 2005

DRAWN BY: MRK
 CHECKED BY: JAL

3/4/2005 8:07:32 AM