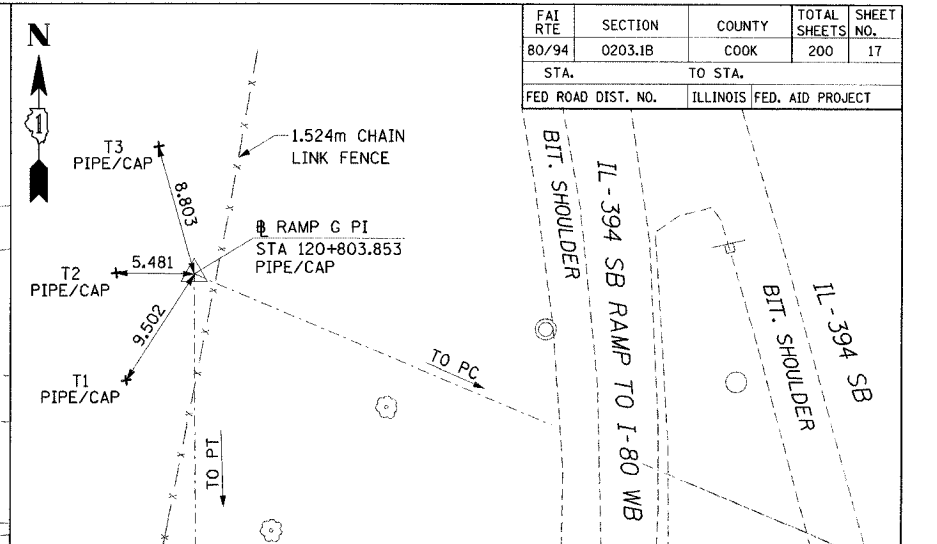
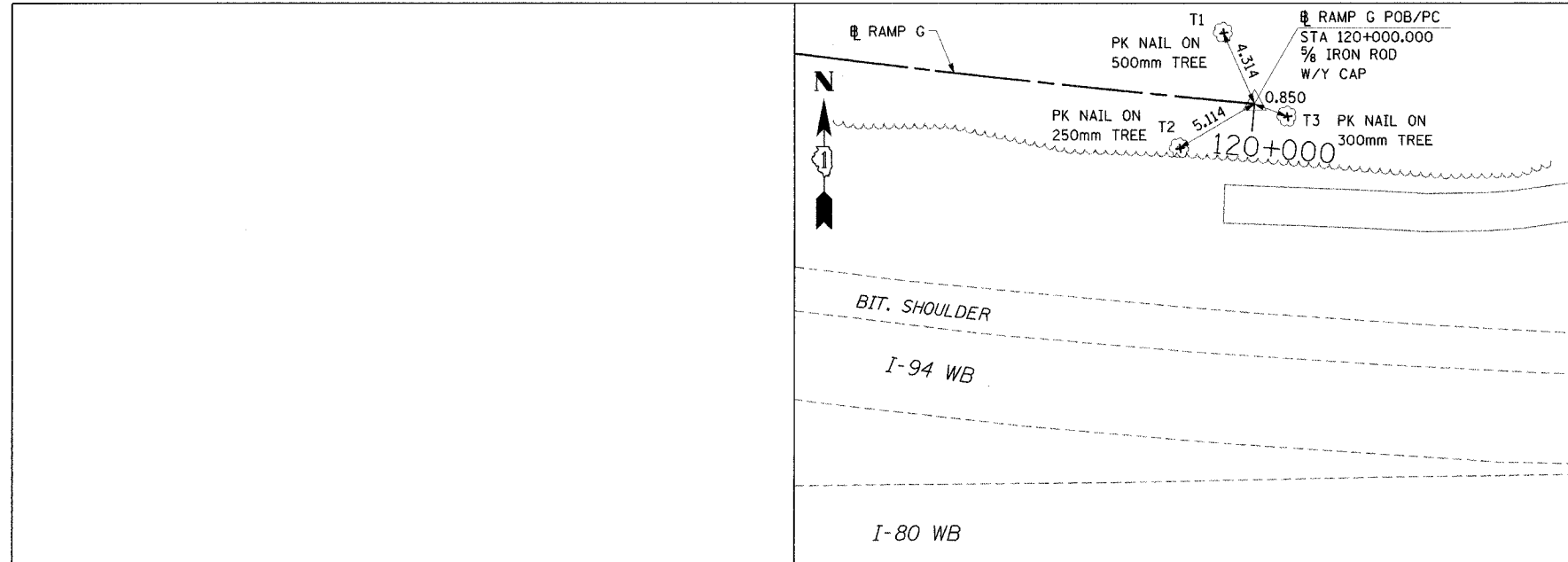
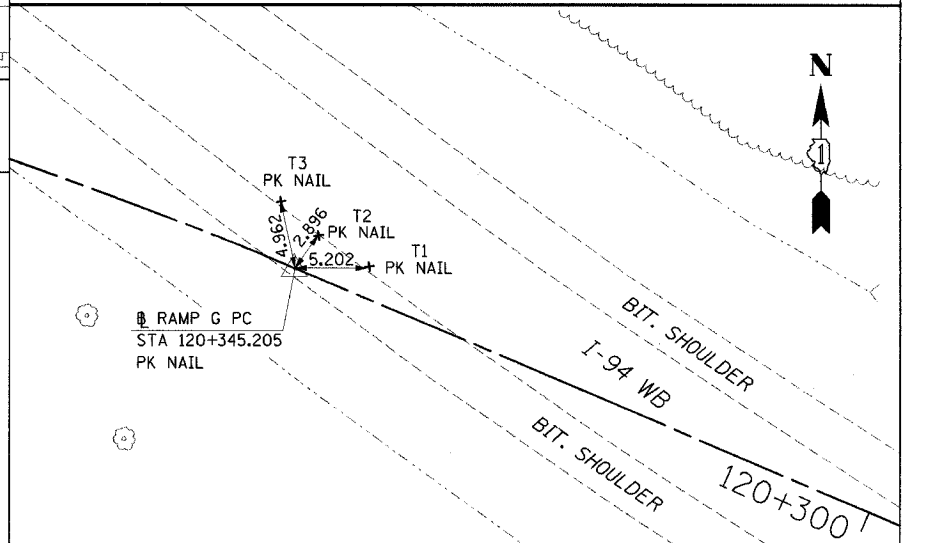
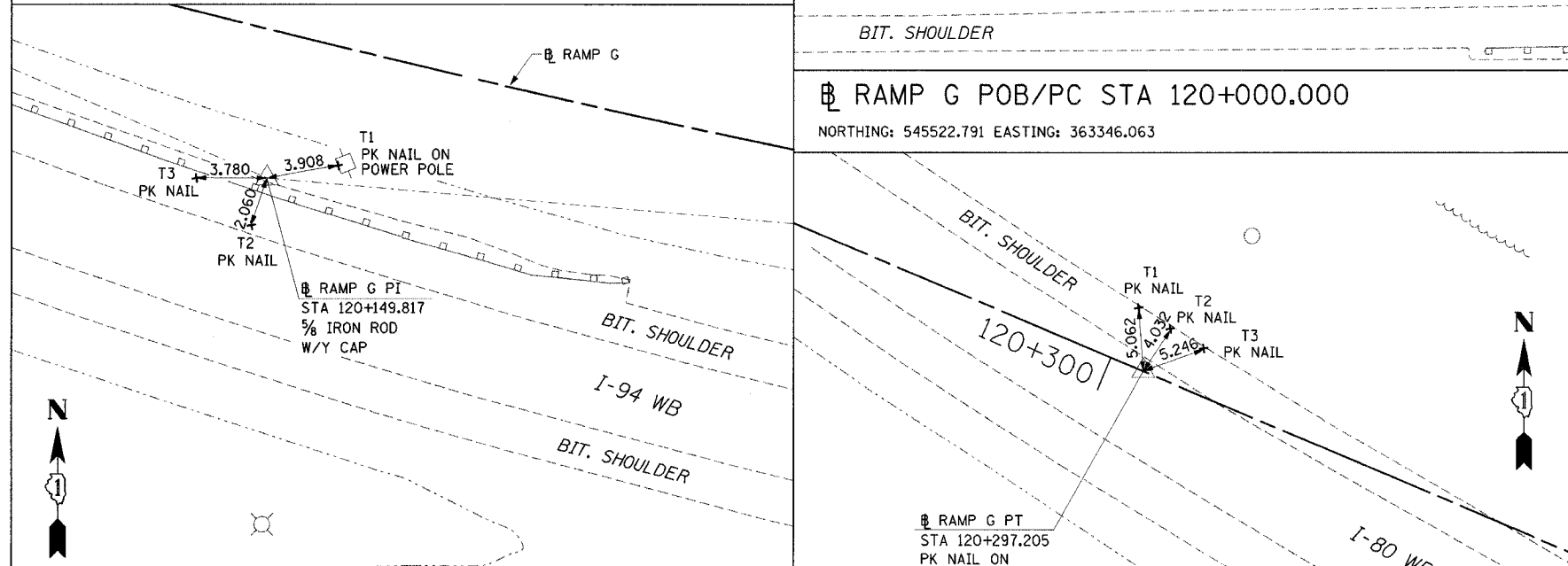


| FBI | SECTION | COUNTY | TOTAL SHEETS | SHEET NO. |
|--------------------|---------|---------------------------|--------------|-----------|
| 80/94 | 0203.1B | COOK | 200 | 17 |
| STA. | | TO STA. | | |
| FED ROAD DIST. NO. | | ILLINOIS FED. AID PROJECT | | |



RAMP G PI STA 120+803.853
 NORTHING: 545791.118 EASTING: 362591.997



RAMP G PC STA 120+345.205
 NORTHING: 545791.118 EASTING: 362591.997

RAMP G PI STA 120+149.817
 NORTHING: 545535.900 EASTING: 363196.820

RAMP G PT STA 120+297.205
 NORTHING: 545594.145 EASTING: 363058.789

NOTE:
 ALL MEASUREMENTS ARE IN METERS (m)
 UNLESS OTHERWISE NOTED.

TB-3

ILLINOIS DEPARTMENT OF TRANSPORTATION
 I-80/94 WB FLYOVER RAMP
 TO SB IL 394 (RAMP G)

ALIGNMENT TIES

HORIZ SCALE: N.T.S.
 VERT SCALE: N.T.S.
 DATE: MARCH 23, 2005
 DRAWN BY: BAJ/JYMC
 CHECKED BY: JES

| REVISIONS | |
|-----------|------|
| NAME | DATE |
| | |
| | |
| | |
| | |
| | |
| | |

HNTB