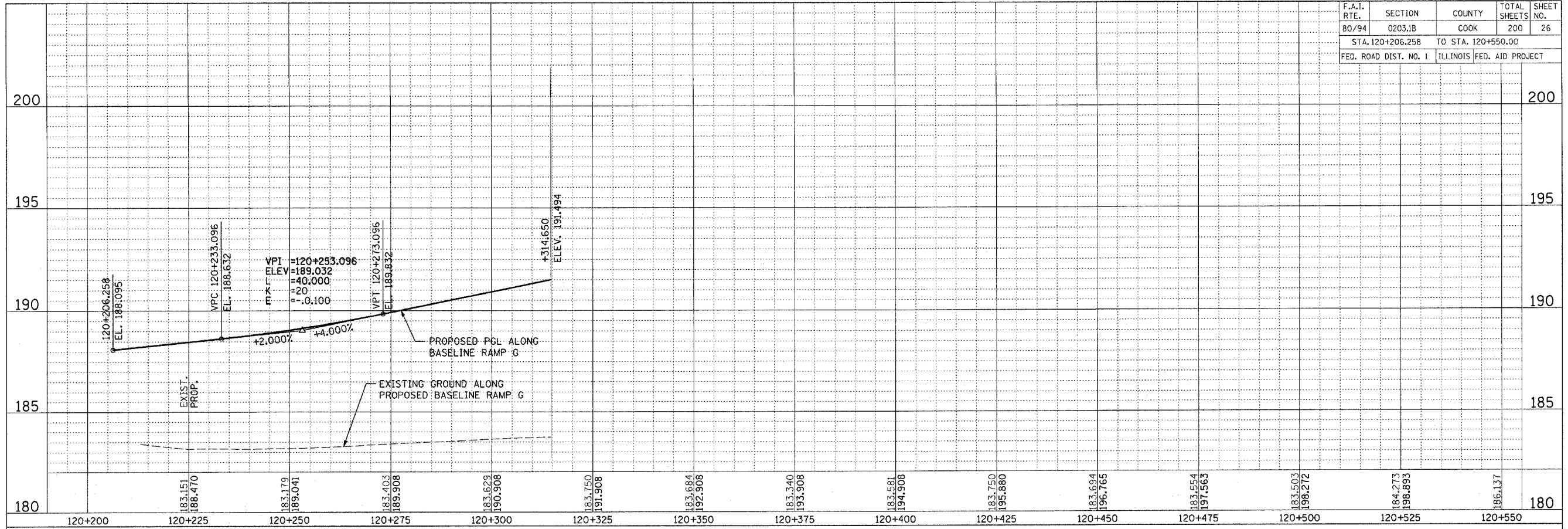


F.A.I. RTE.	SECTION	COUNTY	TOTAL SHEETS	SHEET NO.
80/94	0203.1B	COOK	200	26
STA. 120+206.258		TO STA. 120+550.00		
FED. ROAD DIST. NO. 1		ILLINOIS FED. AID PROJECT		

FINAL SURVEY PLOTTED	BY	DATE
NOTE BOOK NO.		
TEMPLATE AREAS CHECKED		

ORIGINAL SURVEY PLOTTED	BY	DATE
NOTE BOOK NO.		
TEMPLATE AREAS CHECKED		



REVISIONS		ILLINOIS DEPARTMENT OF TRANSPORTATION F.A.I. ROUTE 80/94 (INTERSTATE 80/294)
NAME	DATE	
		RAMP G ROAD PROFILE STA. 120+206.26 TO 120+550.00 HORIZ SCALE: 1 : 500 VERT SCALE: 1 : 100 DATE: MARCH 23, 2005 DRAWN BY: CTT CHECKED BY: RCH
McDonough Associates Inc. Engineers / Architects		PF-6

Contract 28002005a.dgn 3/23/2005 3:04:41 PM