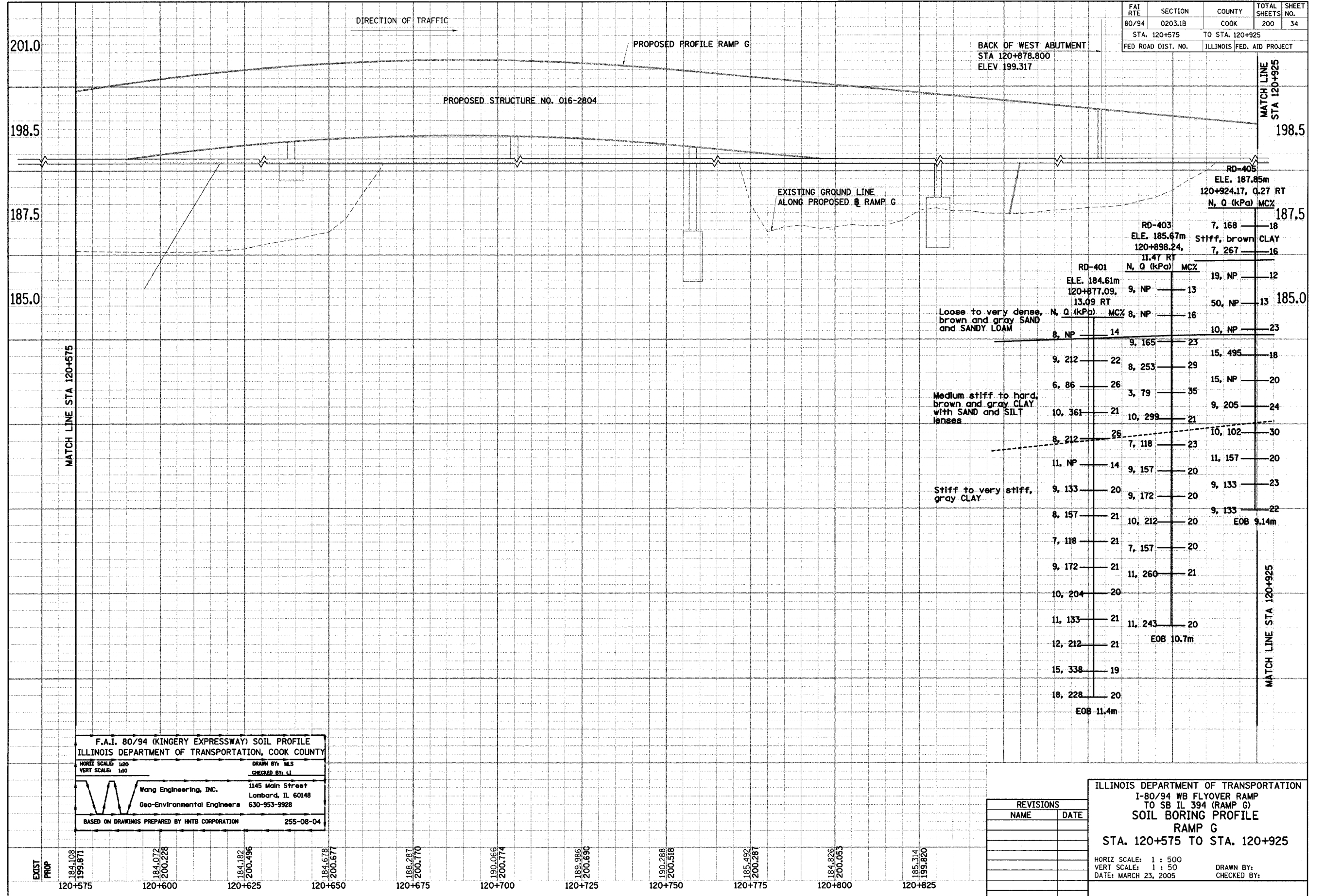


FAI RTE	SECTION	COUNTY	TOTAL SHEETS	SHEET NO.
80/94	0203.1B	COOK	200	34
STA. 120+575		TO STA. 120+925		
FED ROAD DIST. NO.		ILLINOIS FED. AID PROJECT		



F.A.I. 80/94 (KINGERY EXPRESSWAY) SOIL PROFILE
 ILLINOIS DEPARTMENT OF TRANSPORTATION, COOK COUNTY

HORIZ SCALE: 1:20
 VERT SCALE: 1:40

DRAWN BY: M.S.
 CHECKED BY: L.I.

Wang Engineering, Inc. 1145 Main Street
 Lombard, IL 60148
 Geo-Environmental Engineers 630-953-9928

BASED ON DRAWINGS PREPARED BY HNTB CORPORATION 255-08-04

ILLINOIS DEPARTMENT OF TRANSPORTATION
 I-80/94 WB FLYOVER RAMP
 TO SB IL 394 (RAMP G)
 SOIL BORING PROFILE
 RAMP G
 STA. 120+575 TO STA. 120+925

REVISIONS	
NAME	DATE

HORIZ SCALE: 1 : 50
 VERT SCALE: 1 : 50
 DATE: MARCH 23, 2005
 DRAWN BY:
 CHECKED BY: